

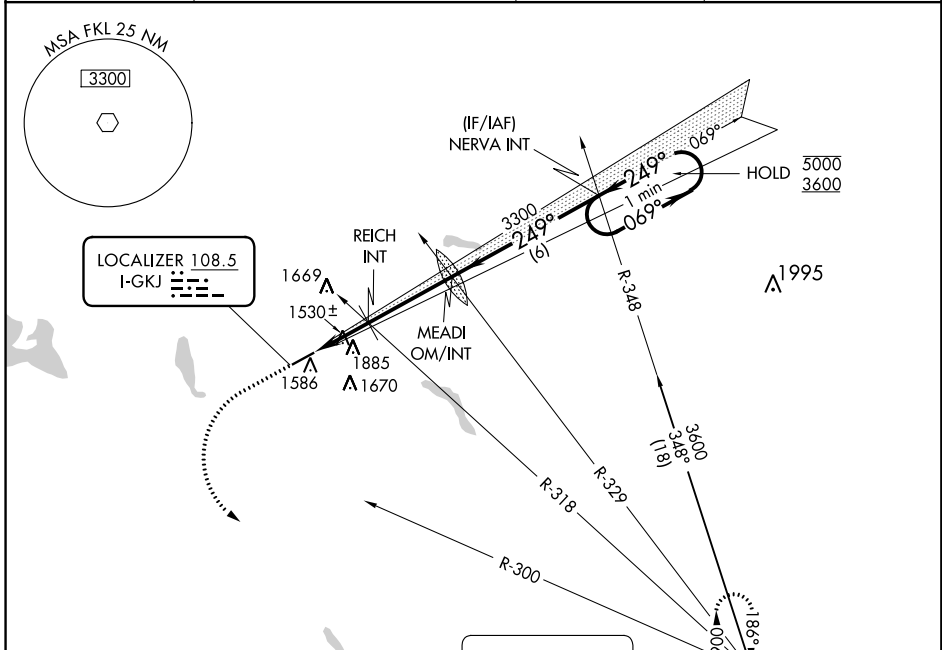
LOC I-GKJ <b>108.5</b>	APP CRS <b>249°</b>	Rwy Idg <b>5001</b>
		TDZE <b>1399</b>
		Apt Elev <b>1399</b>

# LOC RWY 25

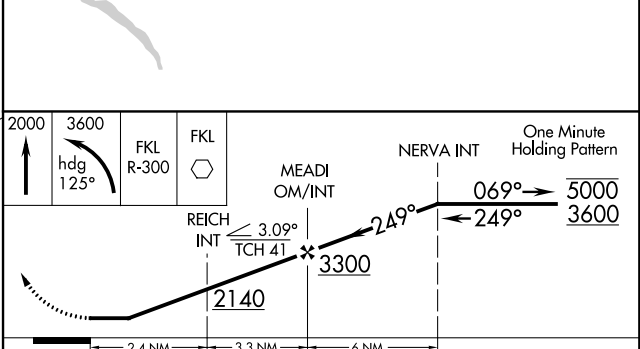
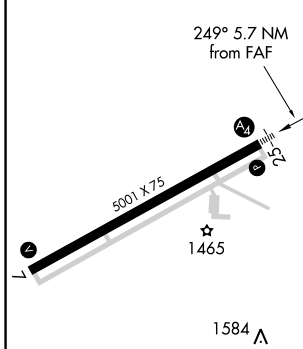
PORT MEADVILLE (GKJ)

RADAR required.		MALS	MISSED APPROACH: Climb to 2000 then climbing left turn to 3600 on heading 125° and FKL VOR R-300 to FKL VOR and hold.
<p>⚠ Inop table does not apply.</p> <p>⚠ Rwy 25 helicopter visibility reduction below 3/4 SM NA.</p>			

ASOS <b>121.425</b>	YOUNGSTOWN APP CON * <b>133.95 322.3</b>	CLNC DEL <b>124.95</b>	UNICOM <b>123.0 (CTAF) 0</b>
------------------------	---	---------------------------	---------------------------------



ELEV 1399	TDZE 1399
-----------	-----------



MIRL Rwy 7-25 0	FAF to MAP 5.7 NM				
Knots	60	90	120	150	180
Min:Sec	5:42	3:48	2:51	2:17	1:54
CATEGORY	A	B	C	D	
S-LOC 25	1780-1	381 (400-1)	1780-1 7/8	381 (400-1 7/8)	
CIRCLING	1900-1 501 (600-1)	2240-1 1/4 841 (900-1 1/4)	2240-2 1/2 841 (900-2 1/2)	2240-2 3/4 841 (900-2 3/4)	

NE-4, 06 DEC 2018 to 03 JAN 2019

NE-4, 06 DEC 2018 to 03 JAN 2019