

VOR/DME UBG 117.4 Chan 121	APP CRS 345°	Rwy Idg TDZE Apt Elev N/A N/A 208
--	------------------------	---

VOR/DME-C

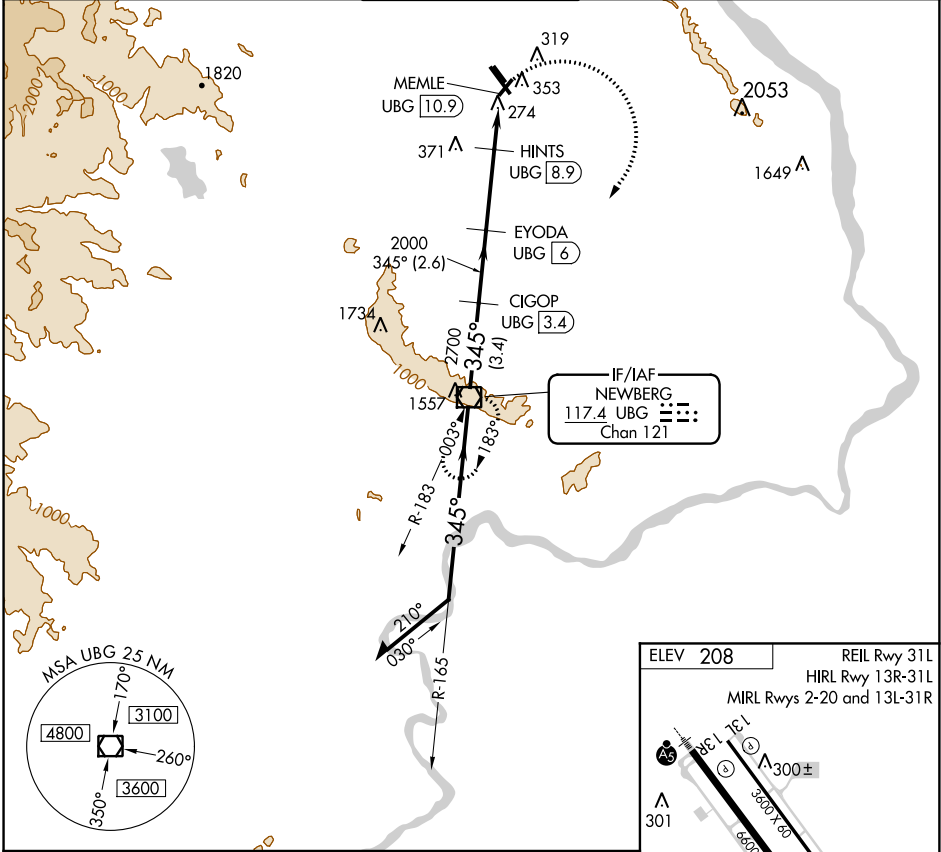
PORTLAND-HILLSBORO (HIO)



When local altimeter setting not received, use Portland Intl altimeter setting and increase all MDA 60 feet; increase Circling Cat D visibility 1/4 mile.

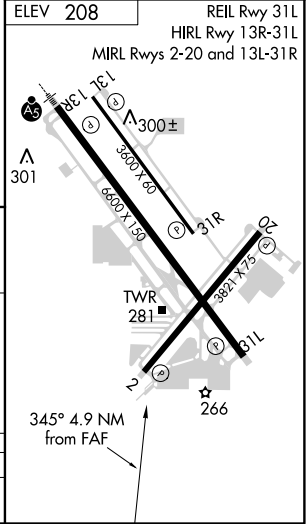
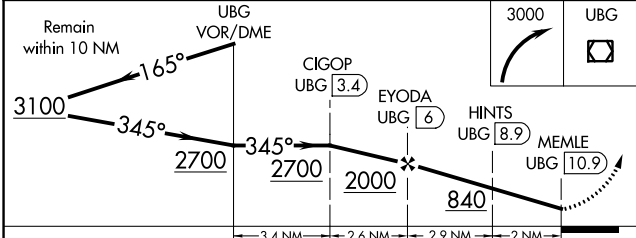
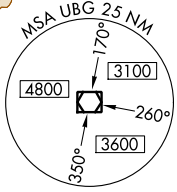
MISSED APPROACH: Climbing right turn to 3000 direct UBG VOR/DME and hold.

ATIS 127.65	PORTLAND APP CON 126.0 269.175	HILLSBORO TOWER ★ 119.3 (CTAF) 239.3	GND CON 121.7	UNICOM 122.95
-----------------------	--	--	-------------------------	-------------------------



NW-1, 06 DEC 2018 to 03 JAN 2019

NW-1, 06 DEC 2018 to 03 JAN 2019



CATEGORY	A	B	C	D
CIRCLING	680-1 472 (500-1)	720-1 512 (600-1)	720-1½ 512 (600-1½)	980-2½ 772 (800-2½)