

WAAS CH <b>69502</b> <b>W13A</b>	APP CRS <b>127°</b>	Rwy Idg TDZE <b>203</b> Apt Elev <b>208</b>
--	------------------------	---

# RNAV (GPS) RWY 13R

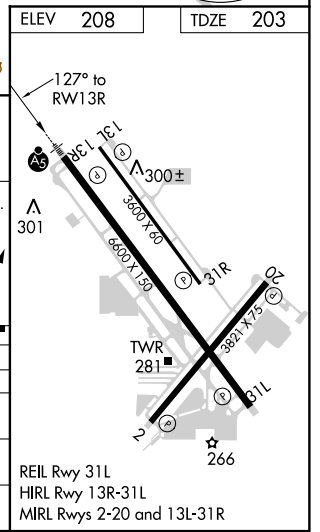
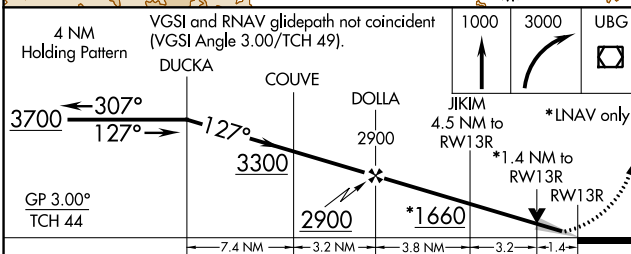
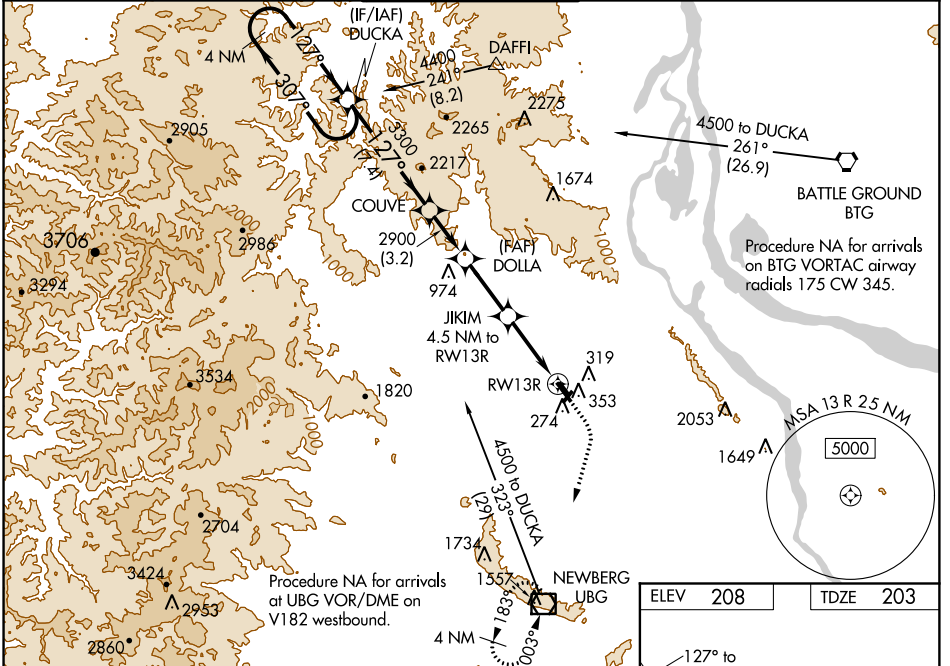
PORTLAND-HILLSBORO (HIO)

**⚠** For uncompensated Baro-VNAV systems, LNAV/VNAV NA below -18°C (0°F) or above 54°C (130°F). DME/DME RNP-0.3 NA. When local altimeter setting not received, use Portland Intl altimeter setting and increase all DA/MDA 60 feet, increase LNAV/VNAV and LNAV all Cats visibility ¼ mile. For inop MALSRS when using Portland Intl altimeter setting, increase LPV all Cats visibility to RVR 4500, increase LNAV Cats C/D visibility to RVR 5500. VDP and Baro-VNAV NA when using Portland Intl altimeter setting, # RVR 1800 authorized with use of FD or AP or HUD to DA, NA when using Portland Intl altimeter setting.

**MALSRS**

**MISSED APPROACH:**  
Climb to 1000 then climbing right turn to 3000 direct UBG VOR /DME and hold.

ATIS <b>127.65</b>	PORTLAND APP CON <b>126.0 269.175</b>	HILLSBORO TOWER * <b>119.3 (CTAF) 239.3</b>	GND CON <b>121.7</b>	UNICOM <b>122.95</b>
-----------------------	--	--	-------------------------	-------------------------



CATEGORY	A	B	C	D
LPV DA #		403/24	200 (200-½)	
LNAV/VNAV DA		672/60	469 (500-1¼)	
LNAV MDA	680/40	477 (500-¾)	680/50	477 (500-1)
<b>C</b> CIRCLING	680-1 472 (500-1)	720-1 512 (600-1)	720-1½ 512 (600-1½)	980-2½ 772 (800-2½)

NW-1, 06 DEC 2018 to 03 JAN 2019

NW-1, 06 DEC 2018 to 03 JAN 2019