

PND NDB 356	APP CRS 127°	Rwy Idg TDZE Apt Elev	N/A N/A 208
-----------------------	------------------------	-----------------------------	--

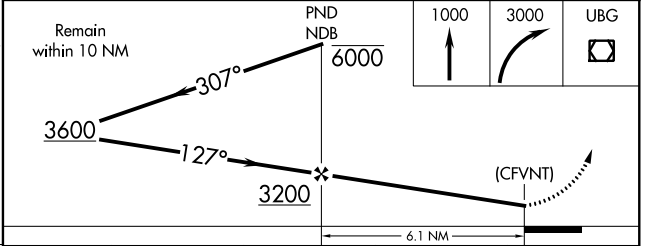
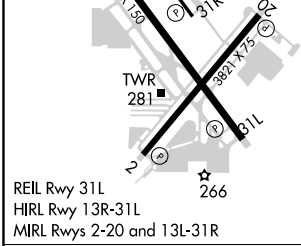
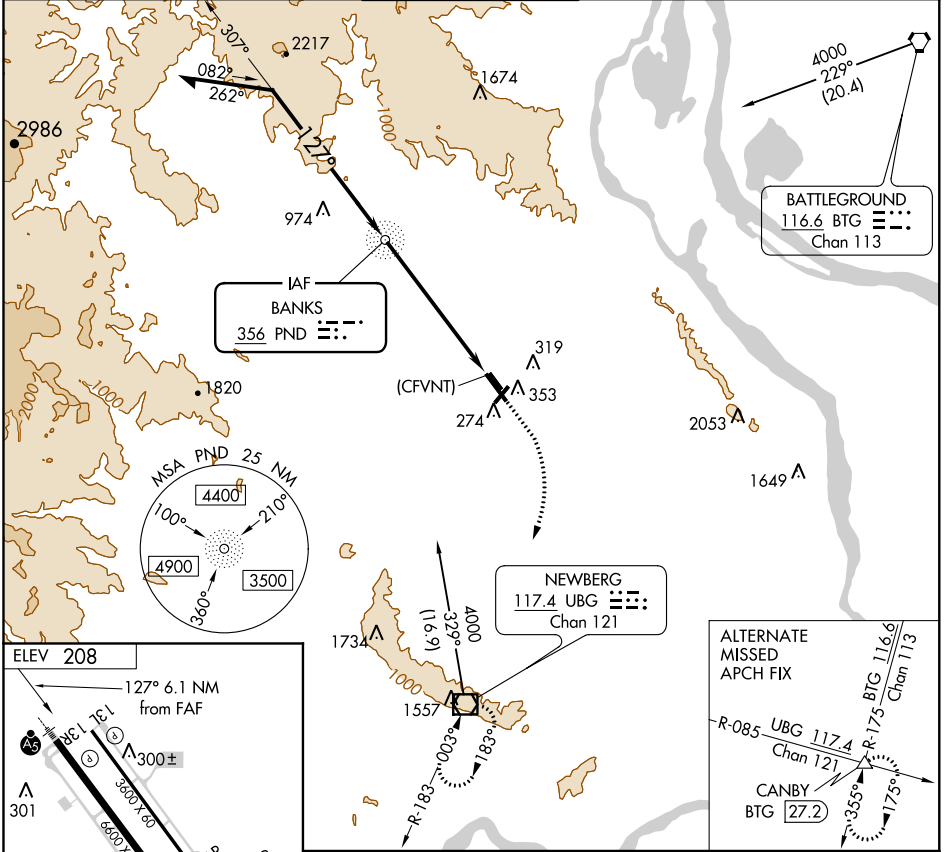
NDB-B

PORTLAND-HILLSBORO (HIO)

NA When local altimeter setting not received, use Portland Intl altimeter setting: increase all MDA 60 feet and visibility Cats C and D ¼ mile.

MISSED APPROACH: Climb to 1000 then climbing right turn to 3000 direct UBG VOR/DME and hold.

ATIS 127.65	PORTLAND APP CON 126.0 269.175	HILLSBORO TOWER ★ 119.3 (CTAF) 239.3	GND CON 121.7	UNICOM 122.95
-----------------------	--	--	-------------------------	-------------------------



FAF to MAP 6.1 NM					
Knots	60	90	120	150	180
Min:Sec	6:06	4:04	3:03	2:26	2:02
CATEGORY	A	B	C	D	
CIRCLING	900-1	692 (700-1)	900-2 692 (700-2)	980-2½ 772 (800-2½)	

NW-1, 06 DEC 2018 to 03 JAN 2019

NW-1, 06 DEC 2018 to 03 JAN 2019