

LOC I-HIO	APP CRS	Rwy Idg	6600
110.7	128°	TDZE	203
		Apt Elev	208

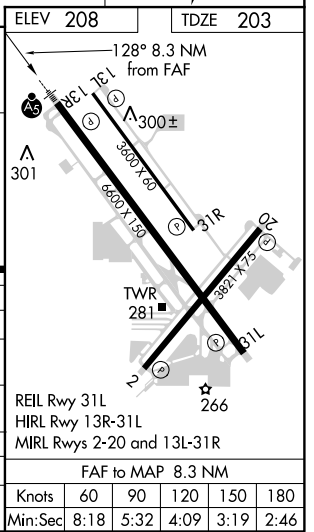
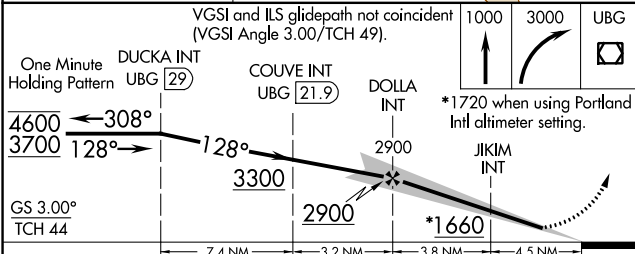
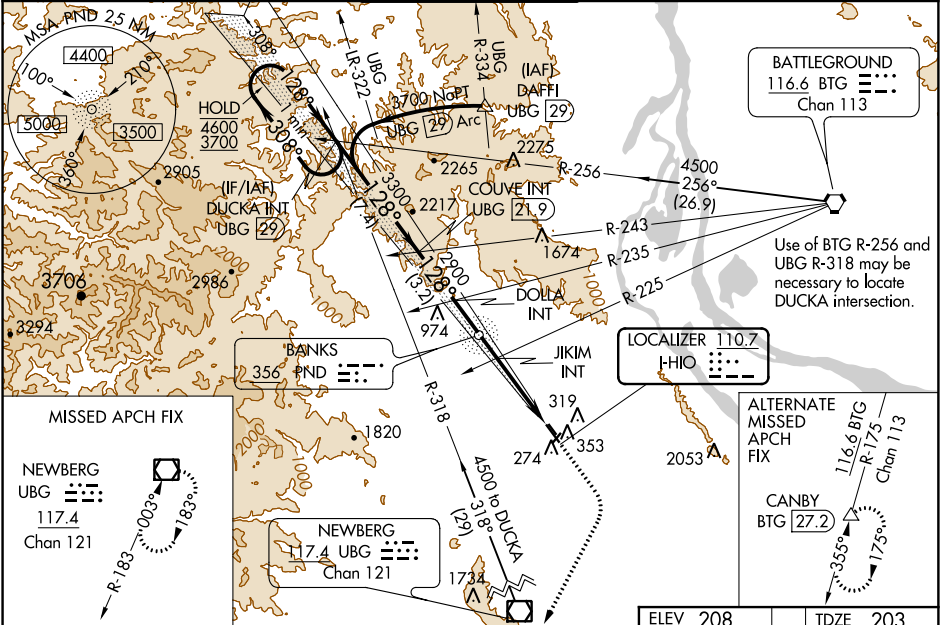
# ILS or LOC RWY 13R

PORTLAND-HILLSBORO (HIO)

**⚠ Inop table does not apply to S-LOC 13R Cats A and B. For inop ALS when using Portland Intl altimeter setting, increase S-ILS 13R all Cats visibility to RVR 4500. When local altimeter setting not received, use Portland Intl altimeter setting and increase all DA/MDA 60 feet, increase JKIM fix minimums S-LOC 13R Cats C and D visibility to 1 1/2 SM. # RVR 1800 authorized with use of FD or AP or HUD to DA, NA when using Portland Intl altimeter setting.**

MALS R	MISSED APPROACH: Climb to 1000 then climbing right turn to 3000 direct UBG VOR/DME and hold.
--------	--

ATIS <b>127.65</b>	PORTLAND APP CON <b>126.0 269.175</b>	HILLSBORO TOWER * <b>119.3(CTAF) 0 239.3</b>	GND CON <b>121.7</b>	UNICOM <b>122.95</b>
-----------------------	--	---	-------------------------	-------------------------



CATEGORY	A	B	C	D
S-ILS 13R #	403/24 200 (200-1/2)			
S-LOC 13R	1660/60 1457 (1500-1 1/4)	1660-1 1/2 1457 (1500-1 1/2)	1660-3	1457 (1500-3)
CIRCLING	1660-1 1/4 1452 (1500-1 1/4)	1660-1 1/2 1452 (1500-1 1/2)	1660-3	1452 (1500-3)
JKIM FIX MINIMUMS (DUAL VOR RECEIVERS REQUIRED)				
S-LOC 13R	680/24	477 (500-1/2)	680/50	477 (500-1)
CIRCLING	680-1 472 (500-1)	720-1 512 (600-1)	720-1 1/2 512 (600-1 1/2)	980-2 1/2 772 (800-2 1/2)

NW-1, 06 DEC 2018 to 03 JAN 2019

NW-1, 06 DEC 2018 to 03 JAN 2019