

WAAS CH <b>99413</b> <b>W18A</b>	APP CRS <b>179°</b>	Rwy Idg <b>6508</b> TDZE <b>9</b> Apt Elev <b>10</b>
--	------------------------	--

# RNAV (GPS) RWY 18

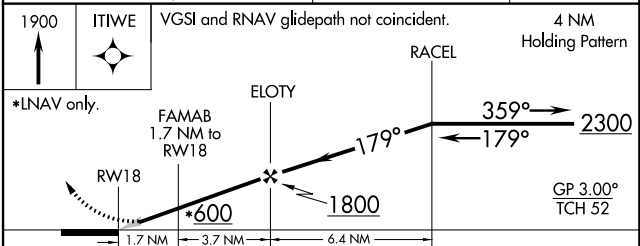
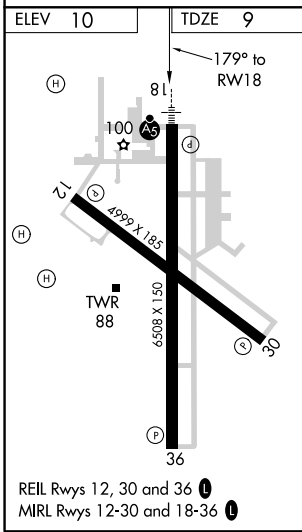
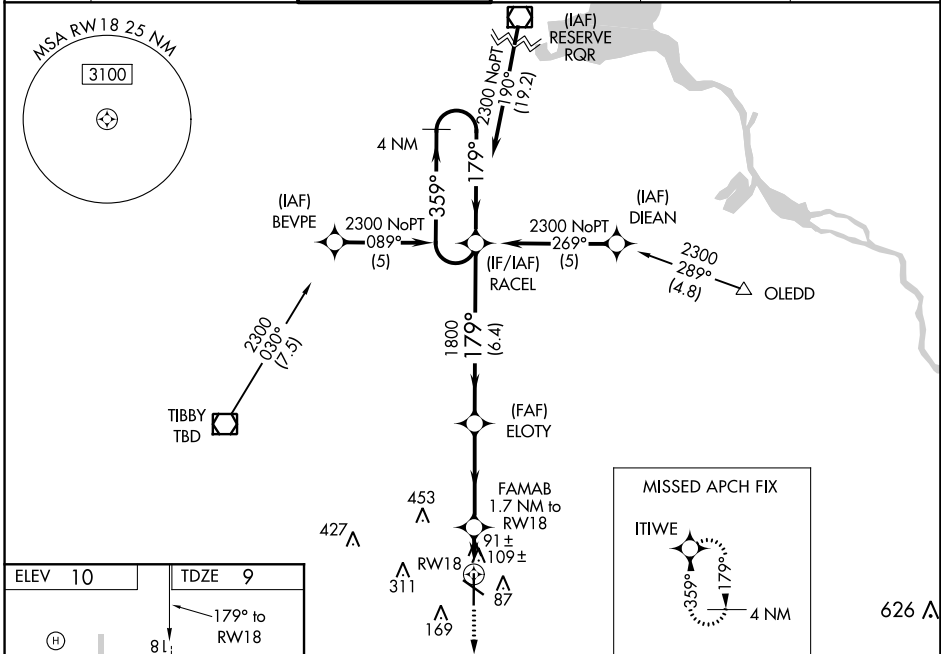
HOUMA-TERREBONNE (HUM)

**⚠** Baro-VNAV NA when using Louis Armstrong New Orleans Intl altimeter setting. For uncompensated Baro-VNAV systems, LNAV/VNAV NA below -15°C (5°F) or above 49°C (120°F). DME/DME RNP-0.3 NA. When local altimeter setting not received, use Louis Armstrong New Orleans Intl altimeter setting and increase all DA 77 feet and LNAV/VNAV all Cats visibility ¼ mile, increase all MDA 80 feet, LNAV Cat C visibility ¼ mile and Circling Cat D visibility ¼ mile. For inoperative MALSR when using Louis Armstrong New Orleans Intl altimeter setting increase LPV all Cats visibility to 1 mile.

**MALSR**

**MISSED APPROACH:** Climb to 1900 direct ITIWE and hold.

ATIS <b>120.25</b>	NEW ORLEANS APP CON <b>118.9 350.35</b>	HOUMA TOWER ★ <b>125.3 (CTAF) 346.3</b>	GND CON <b>121.8</b>	CLNC DEL <b>118.9</b> (when tower closed)	UNICOM <b>122.95</b>
-----------------------	--	--	-------------------------	---	-------------------------



CATEGORY	A	B	C	D
LPV DA		209-1/2	200 (200-1/2)	
LNAV/VNAV DA		450-1	441 (500-1)	
LNAV MDA	440-1/2	431 (500-1/2)	440-3/4 431 (500-3/4)	440-1 431 (500-1)
CIRCLING	480-1	470 (500-1)	480-1 1/2 470 (500-1 1/2)	620-2 610 (700-2)

SC-4, 06 DEC 2018 to 03 JAN 2019

SC-4, 06 DEC 2018 to 03 JAN 2019