

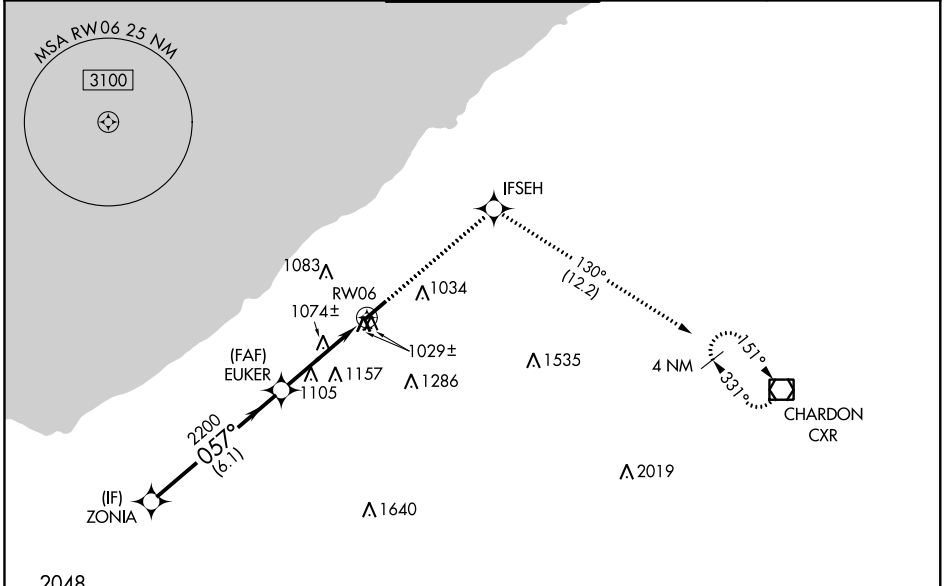
WAAS CH <b>70628</b> <b>W06A</b>	APP CRS <b>057°</b>	Rwy Idg TDZE Apt Elev	<b>5102</b> <b>874</b> <b>876</b>
--	------------------------	-----------------------------	---

# RNAV (GPS) RWY 6

CUYAHOGA COUNTY (CGF)

RNP APCH.		MISSED APPROACH: Climb to 3100 direct IFSEH and on track 130° to CXR VOR/DME and hold.	
▼ ▲	Rwy 6 helicopter visibility reduction below 3/4 SM NA. For uncompensated Baro-VNAV systems, LNAV/VNAV NA below -16°C or above 38°C.		

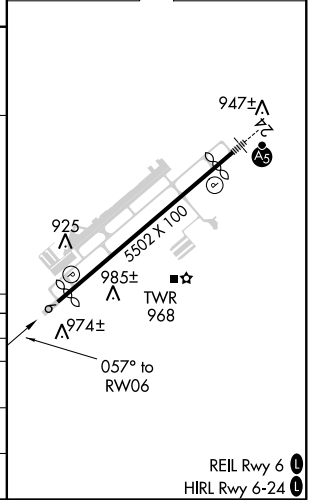
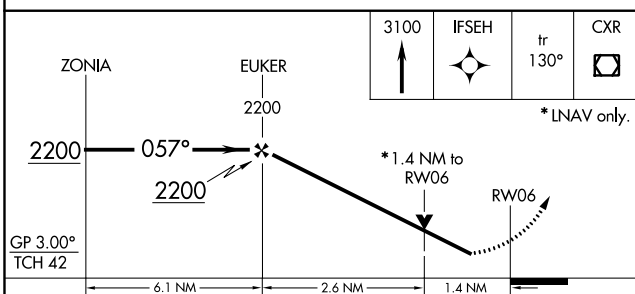
AWOS-3 <b>119.95</b>	CLEVELAND APP CON <b>124.0 354.025</b>	COUNTY TOWER★ <b>118.5 (CTAF) 0</b>	GND CON <b>121.85</b>	CLNC DEL <b>121.85</b> (when tower closed)
-------------------------	---	--	--------------------------	--



EC-2: 06 DEC 2018 to 03 JAN 2019

EC-2: 06 DEC 2018 to 03 JAN 2019

ELEV 876	<b>D</b> TDZE 874
----------	-------------------



CATEGORY	A	B	C	D
LPV DA	1175-7/8		301 (300-7/8)	
LNAV/VNAV DA	1375-1 3/8		501 (500-1 3/8)	
LNAV MDA	1360-1 486 (500-1)		1360-1 3/8 486 (500-1 3/8)	
CIRCLING	1400-1	1500-1	1560-2	1600-2 1/4
	524 (600-1)	624 (700-1)	684 (700-2)	724 (800-2 1/4)