

WAAS CH 42528 W24A	APP CRS 238°	Rwy Idg 5000 TDZE 873 Apt Elev 876
--	------------------------	---

RNAV (GPS) RWY 24

CUYAHOGA COUNTY (CGF)

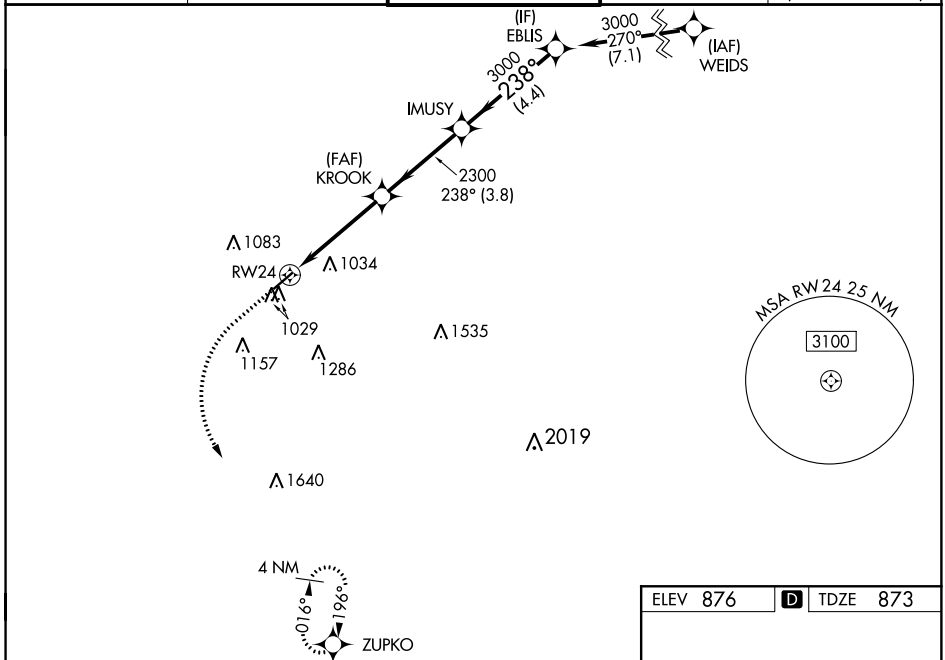
RNP APCH.

⚠ For uncompensated Baro-VNAV systems, LNAV/VNAV NA below -16°C or above 38°C. For inop ALS increase LNAV/VNAV visibility all Cats to 7/8 SM, LNAV Cat C, D to 1 1/8 SM.

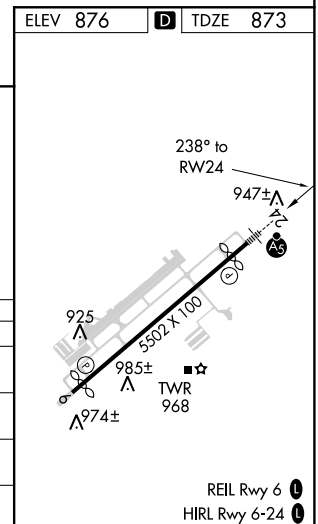


MISSED APPROACH:
Climb to 2500 then climbing left turn to 3000 direct ZUPKO and hold.

AWOS-3 119.95	CLEVELAND APP CON 124.0 354.025	COUNTY TOWER★ 118.5 (CTAF) 0	GND CON 121.85	CLNC DEL 121.85 (when tower closed)
-------------------------	---	--	--------------------------	--



2500	3000	ZUPKO		
*LNAV only		KROOK	IMUSY	EBLIS
*1.1 NM to RW24		2300	3000	3000
1.1 NM		3.2 NM	3.8 NM	4.4 NM
CATEGORY	A	B	C	D
LPV DA		1073-1/2	200 (200-1/2)	
LNAV/VNAV DA		1178-1/2	305 (400-1/2)	
LNAV MDA	1280-1/2	407 (500-1/2)	1280-3/4	407 (500-3/4)
C CIRCLING	1400-1 524 (600-1)	1500-1 624 (700-1)	1560-2 684 (700-1)	1620-2 1/2 744 (800-2 1/2)



EC-2: 06 DEC 2018 to 03 JAN 2019

EC-2: 06 DEC 2018 to 03 JAN 2019

REIL Rwy 6 **0**
HIRL Rwy 6-24 **0**