

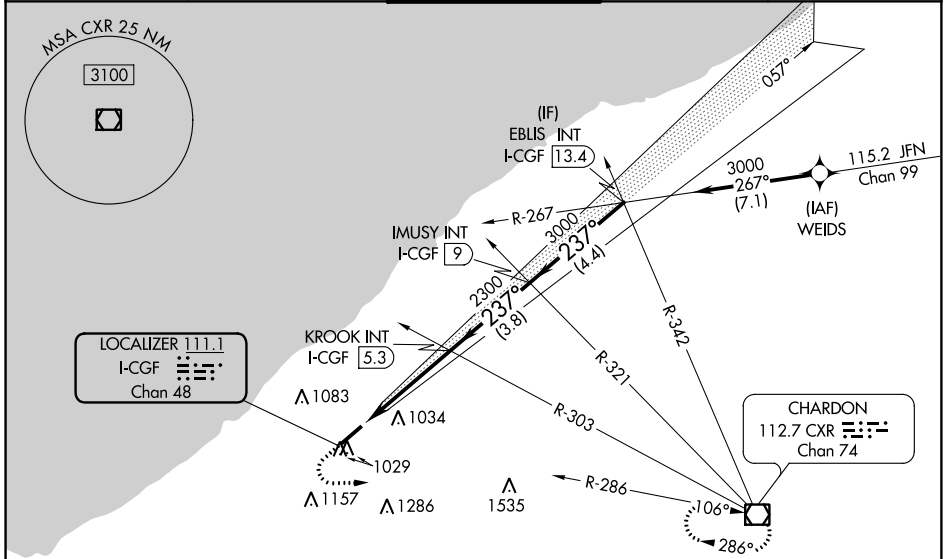
LOC/DME I-CGF <b>111.1</b> Chan 48	APP CRS <b>237°</b>	Rwy Idg TDZE Apt Elev	<b>5000</b> <b>873</b> <b>876</b>
--	------------------------	-----------------------------	---

# ILS or LOC RWY 24

CUYAHOGA COUNTY (CGF)

RNAV 1. RNAV 1-GPS or RADAR required for procedure entry. Aircraft not GPS equipped - RADAR required for procedure entry.	MALSR 	MISSED APPROACH: Climb to 1600 then climbing left turn to 3100 on CXR VOR/DME R-286 to CXR VOR/DME and hold.
<b>⚠</b> Autopilot coupled approach NA below 2020. Rwy 24 helicopter visibility reduction below 3/4 SM NA. For inop ALS increase S-LOC Cats C/D to 1 SM.		

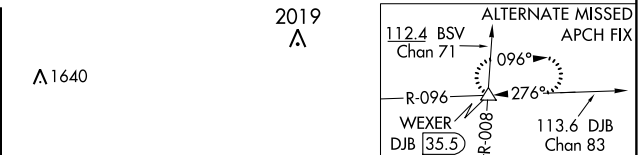
AWOS-3 <b>119.95</b>	CLEVELAND APP CON <b>124.0 354.025</b>	COUNTY TOWER★ <b>118.5 (CTAF) 0</b>	GND CON <b>121.85</b>	CLNC DEL <b>121.85</b> (when tower closed)
-------------------------	---	--	--------------------------	--



ELEV 876	<b>D</b>	TDZE 873
----------	----------	----------

Diagram of the runway and taxiway layout showing REIL Rwy 6, HIRL Rwy 6-24, and taxiway dimensions. Key features include:
 

- 237° 4.3 NM from FAF
- 947±
- 925
- 985±
- 974±
- 5502 X 100
- TWR 968



	1600	3100	CXR R-286	CXR	KROOK INT I-CGF 5.3	IMUSY INT I-CGF 9	EBLIS INT I-CGF 13.4
	*LOC only.						
	I-CGF 0.9	*I-CGF 1.9	2300	237°	237°	3000	GS 3.00° TCH 44
	-1 NM		3.3 NM	3.7 NM	4.4 NM		
CATEGORY	A	B	C	D			
S-ILS 24		1073-1/2	200 (200-1/2)				
S-LOC 24	1240-1/2	367 (400-1/2)	1240-5/8	367 (400-5/8)			
<b>C</b> CIRCLING	1400-1 524 (600-1)	1500-1 624 (700-1)	1560-2 684 (700-2)	1620-2 1/2 744 (800-2 1/2)			