

# GTLKE ONE DEPARTURE (RNAV)

EC-2, 06 DEC 2018 to 03 JAN 2019

AWOS-3  
119.950  
COUNTY TOWER ★  
118.5 (CTAF)  
CLEVELAND DEP CON  
125.35 346.325

**TAKEOFF MINIMUMS:**  
Rwys 6, 24: Standard with a minimum climb  
of 500' per NM to 1400.

**TOP ALTITUDE:**  
14000

## DEPARTURE ROUTE DESCRIPTION

▼ **TAKEOFF RUNWAY 6:** Climb on heading 057° to 2500, then on heading 330° or as assigned by ATC for radar vectors to cross AYYLE at or above 9000, thence....

**TAKEOFF RUNWAY 24:** Climb on heading 237° to 2700, then right turn heading 330° or as assigned by ATC for radar vectors to cross AYYLE at or above 9000, thence....

....on track 275° to cross BRNNIN at or below 14000, then on track 284° to GTLKE then on (transition). Maintain 14000, expect filed altitude ten minutes after departure.

ALPHE TRANSITION (GTLKE1.ALPHE)  
BAGEL TRANSITION (GTLKE1.BAGEL)  
DAIFE TRANSITION (GTLKE1.DAIFE)  
YABRO TRANSITION (GTLKE1.YABRO)

NOTE: RADAR required.

NOTE: RNAV 1.

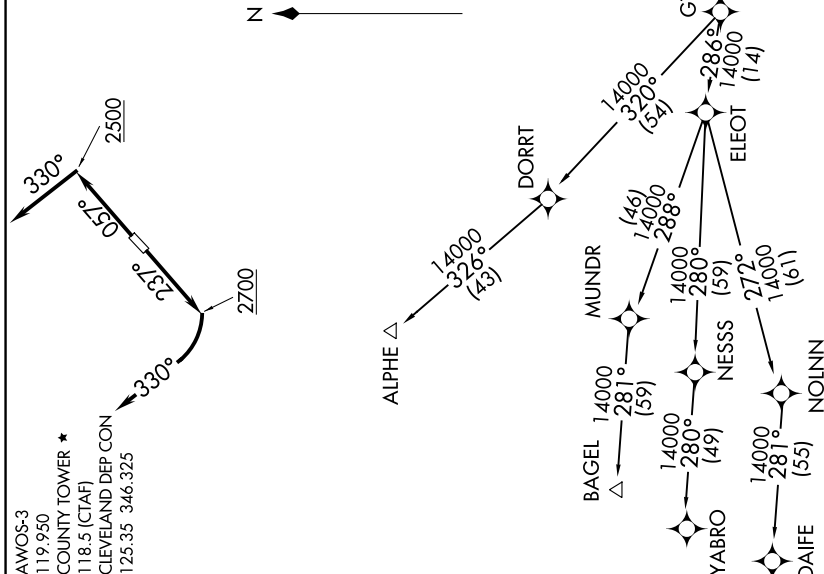
NOTE: DME/DME/IRU or GPS required.

NOTE: BAGEL TRANSITION: For aircraft landing

MDW only, or as assigned by ATC.

NOTE: DAIFE TRANSITION: For aircraft landing

ORD only, or as assigned by ATC.



NOTE: Chart not to scale.

EC-2, 06 DEC 2018 to 03 JAN 2019

# GTLKE ONE DEPARTURE (RNAV)