

# AMRST FIVE DEPARTURE

EC-2, 06 DEC 2018 to 03 JAN 2019

## DEPARTURE ROUTE DESCRIPTION

**TAKEOFF RUNWAYS 6, 24:** Climb on assigned heading to 3000 thence....

....or assigned altitude for vectors to intercept DJB VOR/DME R-265, to AMRST INT then on (transition).  
Expect filed altitude/flight level ten (10) minutes after departure.

**CARLETON TRANSITION (AMRST5.CRL):** From over AMRST INT on CRL R-159 to CRL VORTAC.

**WATERVILLE TRANSITION (AMRST5.VWV):** From over AMRST INT on VWV R-115 to VWV VOR/DME.



AWOS-3  
119.950  
CLEVELAND DEP CON  
125.35 346.32  
AIS 132.375

**TOP ALTITUDE:**  
**3000**

CARLETON  
115.7 CRL  
Chan 104

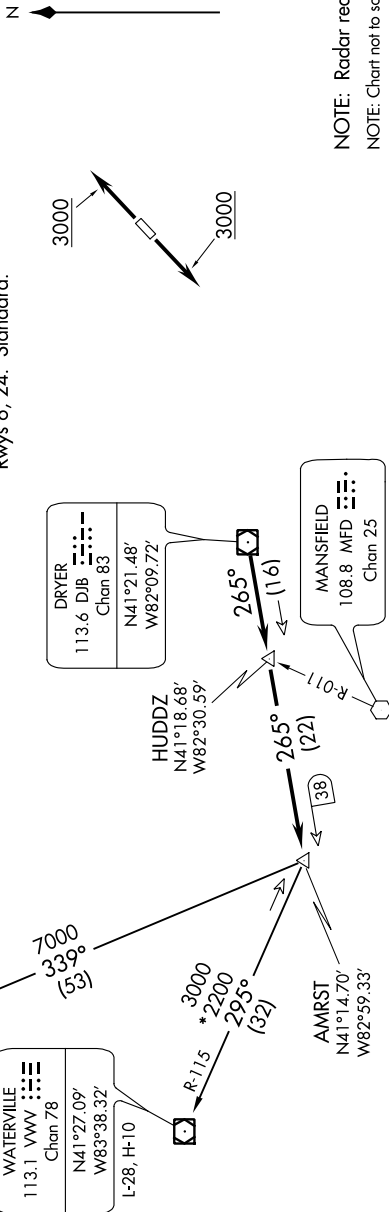
N42°02.88'-W83°27.45'  
L-28, H-10

WATERVILLE  
113.1 VWV  
Chan 78  
N41°27.09'  
W83°38.32'  
L-28, H-10

### TAKEOFF OBSTACLES:

- Rwy 6: Trees beginning 2127' from DER, 33' right of centerline, up to 109' AGL/982' MSL.  
Tree 2595' from DER, 739' left of centerline, 93' AGL/947' MSL.
- Rwy 24: Terrain 35' from DER, 447' left of centerline, 874' MSL.  
Trees beginning 755' from DER, 46' right of centerline, up to 82' AGL/975' MSL.  
Building 1179' from DER, 676' left of centerline, 34' AGL/917' MSL.  
Trees beginning 1784' from DER, 35' left of centerline, up to 92' AGL/985' MSL.

**TAKEOFF MINIMUMS:**  
Rwys 6, 24: Standard.



EC-2, 06 DEC 2018 to 03 JAN 2019