

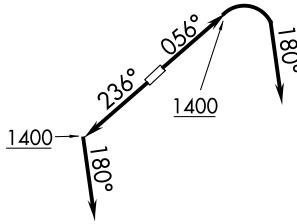
(AHMET1.KKIDS) 18312

AL-5027 (FAA)

CUYAHOGA COUNTY (CGF)  
CLEVELAND, OHIO

# AHMET ONE DEPARTURE (RNAV)

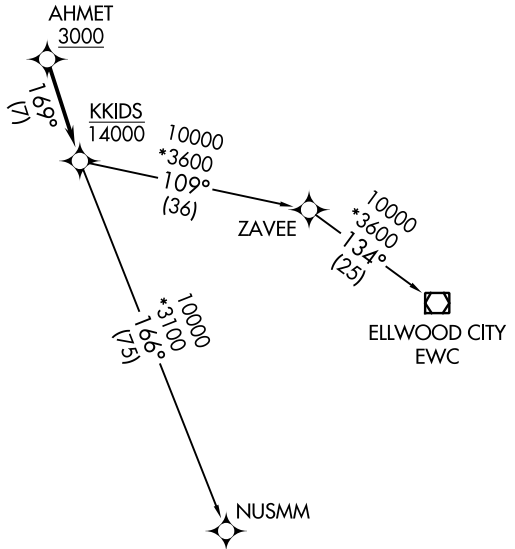
AWOS-3  
 119.950  
 GND CON  
 121.85  
 CLNC DEL  
 121.85 (when tower closed)  
 COUNTY TOWER ★  
 118.5 (CTAF)  
 CLEVELAND DEP CON  
 125.35 346.325



**TOP ALTITUDE:**  
**14000**

TAKEOFF MINIMUMS:  
 Rwy 6, 24: Standard.

NOTE: RNAV 1.  
 NOTE: RADAR required.  
 NOTE: DME/DME/IRU or GPS required.



NOTE: Chart not to scale.



## DEPARTURE ROUTE DESCRIPTION

TAKEOFF RUNWAY 6: Climb heading 056° to 1400, then right turn on heading 180° for RADAR vectors to cross AHMET at or above 3000, thence....

TAKEOFF RUNWAY 24: Climb heading 236° to 1400, then on heading 180° for RADAR vectors to cross AHMET at or above 3000, thence....

....on track 169° to cross KKIDS at or below 14000, then on (transition).

Maintain altitude assigned by ATC, expect filed altitude ten minutes after departure.

ELLWOOD CITY TRANSITION (AHMET1.EWC)  
NUSMM TRANSITION (AHMET1.NUSMM)

**AHMET ONE DEPARTURE (RNAV)**  
 (AHMET1.KKIDS) 19JUL18

CLEVELAND, OHIO  
 CUYAHOGA COUNTY (CGF)

EC-2: 06 DEC 2018 to 03 JAN 2019

EC-2: 06 DEC 2018 to 03 JAN 2019