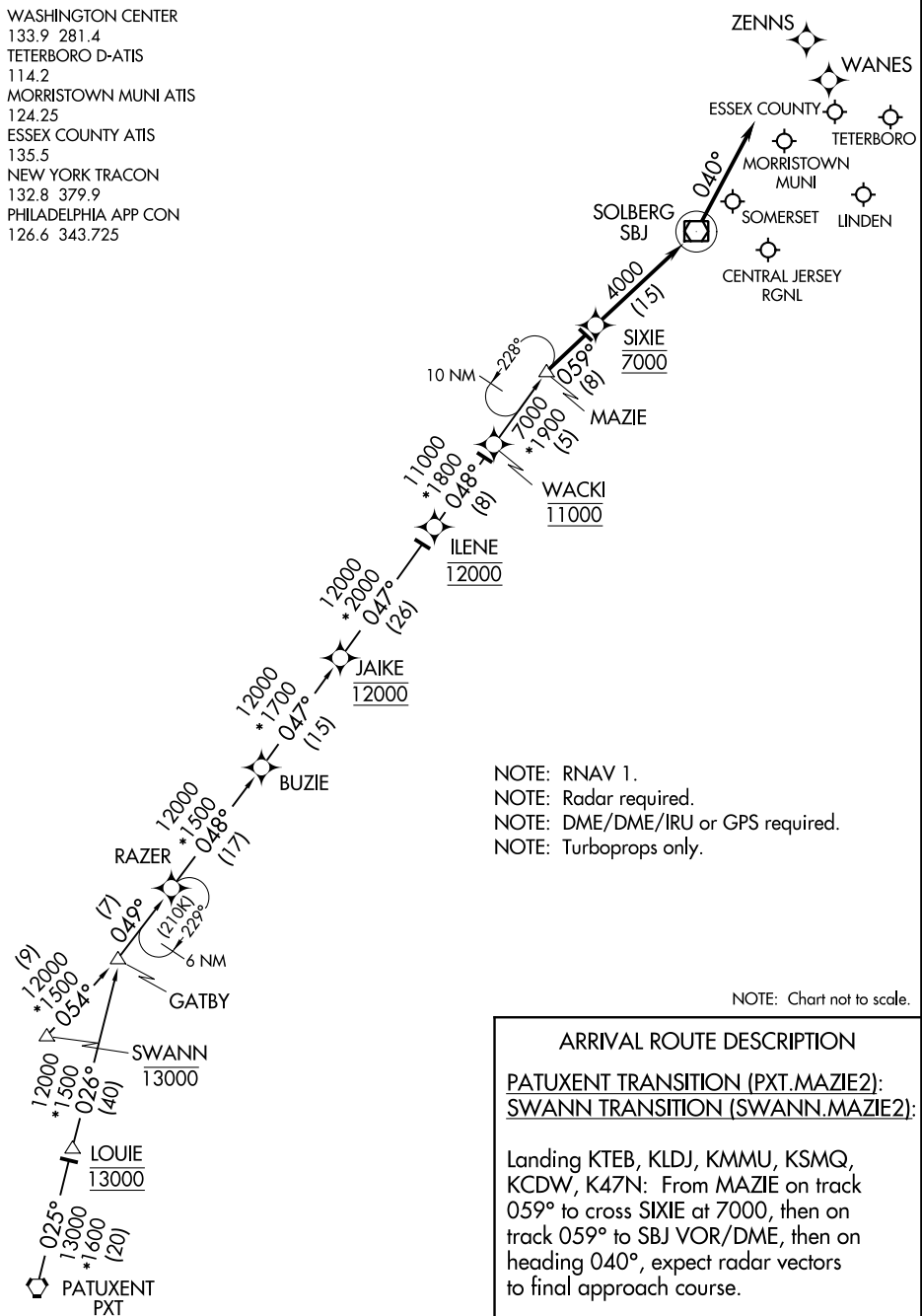


# MAZIE TWO ARRIVAL (RNAV)

TETERBORO, NEW JERSEY

WASHINGTON CENTER  
 133.9 281.4  
 TETERBORO D-ATIS  
 114.2  
 MORRISTOWN MUNI ATIS  
 124.25  
 ESSEX COUNTY ATIS  
 135.5  
 NEW YORK TRACON  
 132.8 379.9  
 PHILADELPHIA APP CON  
 126.6 343.725



NOTE: RNAV 1.  
 NOTE: Radar required.  
 NOTE: DME/DME/IRU or GPS required.  
 NOTE: Turboprops only.

NOTE: Chart not to scale.

**ARRIVAL ROUTE DESCRIPTION**  
PATUXENT TRANSITION (PXT.MAZIE2):  
SWANN TRANSITION (SWANN.MAZIE2):  
 Landing KTEB, KLDJ, KMMU, KSMQ, KCDW, K47N: From MAZIE on track 059° to cross SIXIE at 7000, then on track 059° to SBJ VOR/DME, then on heading 040°, expect radar vectors to final approach course.

NE-2: 06 DEC 2018 to 03 JAN 2019

NE-2: 06 DEC 2018 to 03 JAN 2019

# MAZIE TWO ARRIVAL (RNAV)

TETERBORO, NEW JERSEY