


WAAS CH <b>69215</b> <b>W16A</b>	APP CRS <b>157°</b>	Rwy Idg <b>7203</b> TDZE <b>799</b> Apt Elev <b>799</b>
--	------------------------	---

# RNAV (GPS) RWY 16

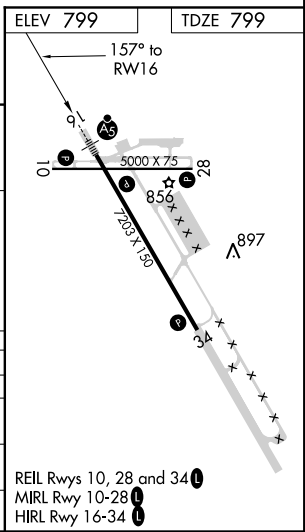
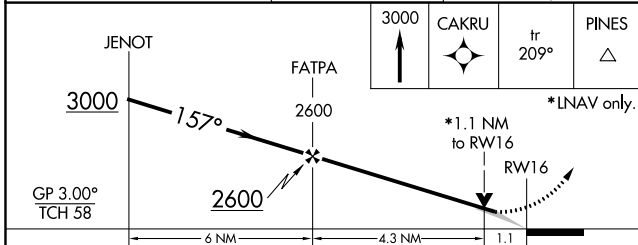
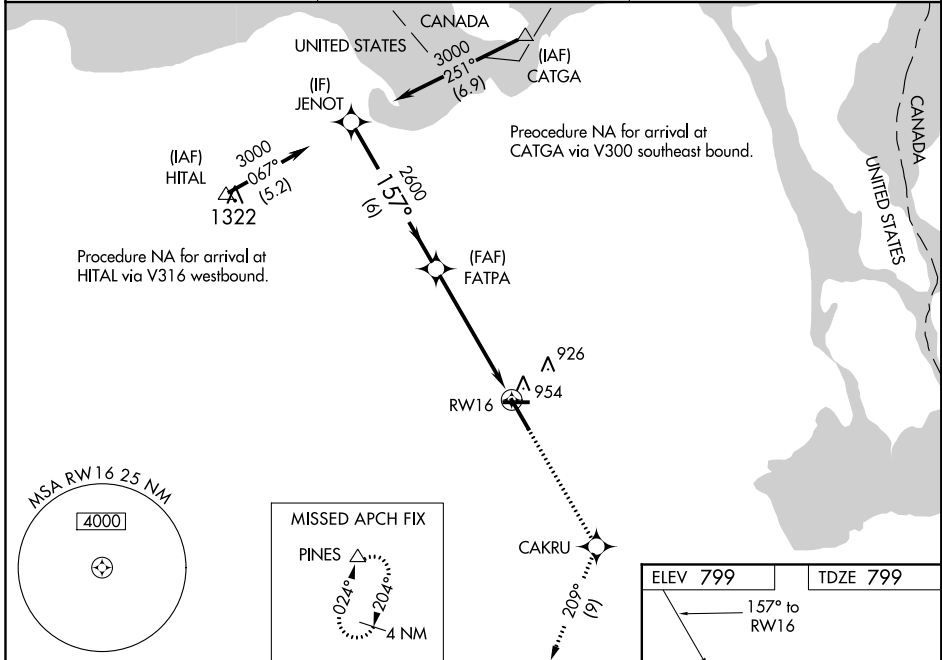
CHIPPEWA COUNTY INTL (CIU)

For uncompensated Baro-VNAV systems, LNAV/VNAV NA below -16°C (4°F) or above 54°C (130°F). DME/DME RNP-0.3 NA. When local altimeter setting not received, use Sault Ste Marie Muni/Sanderson Field altimeter setting and increase all DA 45 feet and all MDA 60 feet. Baro-VNAV and VDP NA when using Sault Ste Marie Muni/Sanderson Field altimeter setting. For inoperative MALSR, increase LPV all Cats, LNAV/VNAV all Cats and LNAV Cats A/B/C ½ mile, increase LNAV Cat D ¼ mile. For inoperative MALSR, when using Sault Ste Marie Muni/Sanderson Field altimeter setting, increase LPV all Cats, LNAV/VNAV all Cats and LNAV all Cats ½ mile.

**MALSR**  


**MISSED APPROACH:**  
Climb to 3000 direct CAKRU and on track 209° to PINES and hold.

AWOS-3PT <b>127.575</b>	TORONTO CENTER <b>132.65 344.5</b>	UNICOM <b>123.0 (CTAF)</b>
----------------------------	---------------------------------------	-------------------------------



CATEGORY	A	B	C	D
LPV DA	1068-½ 269 (300-½)			
LNAV/VNAV DA	1204-1 405 (500-1)			
LNAV MDA	1220-½ 421 (500-½)	1220-¾ 421 (500-¾)	1220-1 421 (500-1)	
CIRCLING	1260-1 461 (500-1)	1260-1½ 461 (500-1½)	1360-2 561 (600-2)	

EC-1, 06 DEC 2018 to 03 JAN 2019

EC-1, 06 DEC 2018 to 03 JAN 2019