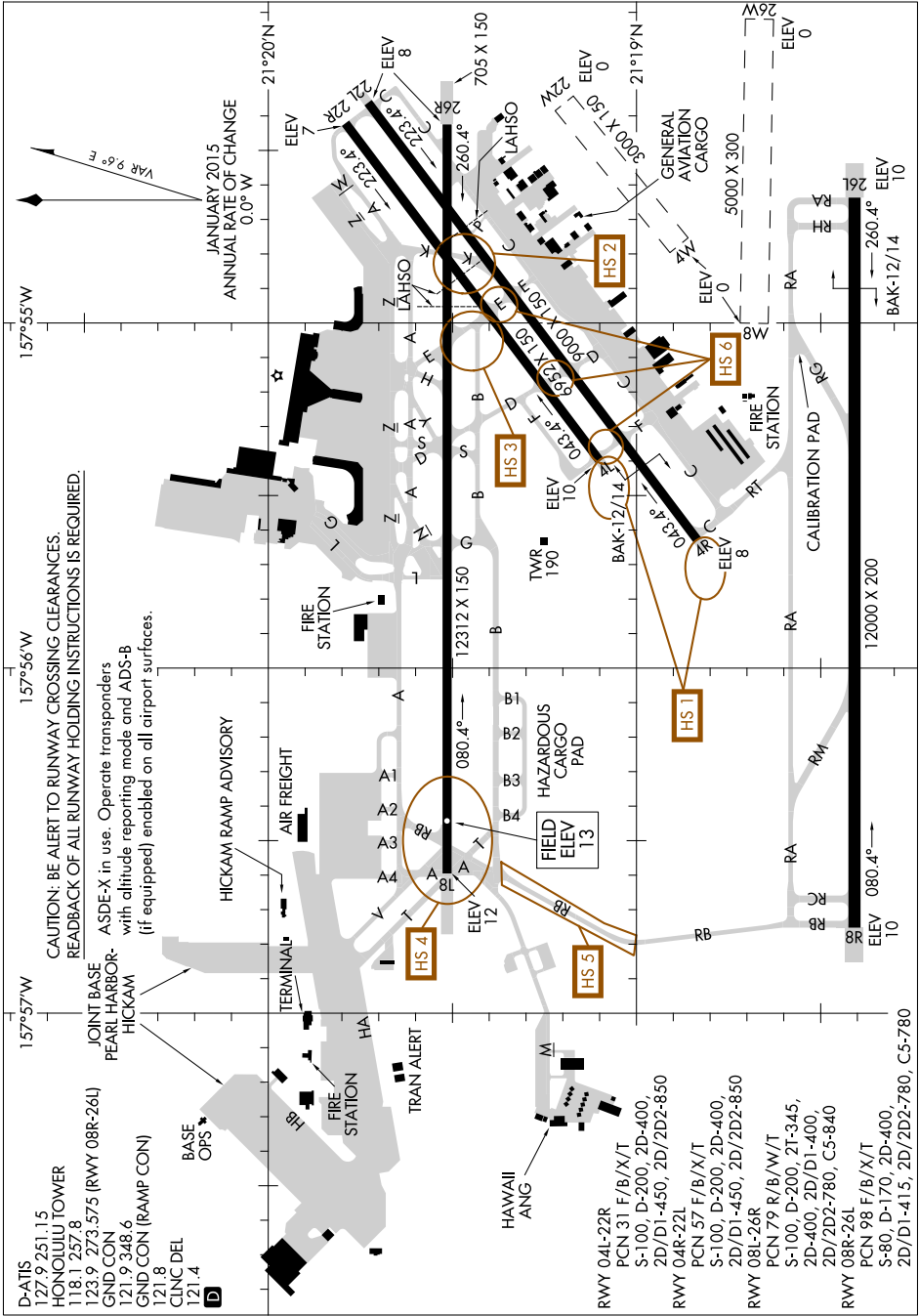


# AIRPORT DIAGRAM

AL-754 (FAA)

## DANIEL K INOUE INTL (HNL) (PHNL)

HONOLULU, HAWAII



JANUARY 2015  
ANNUAL RATE OF CHANGE  
0.0° W

VAR 9.6° E

CAUTION: BE ALERT TO RUNWAY CROSSING CLEARANCES.  
REARBACK OF ALL RUNWAY HOLDING INSTRUCTIONS IS REQUIRED.

ASDE-X in use. Operate transponders  
with altitude reporting mode and ADS-B  
(if equipped) enabled on all airport surfaces.

JOINT BASE  
PEARL HARBOR-  
HICKAM

GND CON  
GND CON (RAMP CON)

HICKAM RAMP ADVISORY

TERMINAL

AIR FREIGHT

HAZARDOUS  
CARGO  
PAD

FIELD  
ELEV  
13

HAZARDOUS  
CARGO  
PAD

FIELD  
ELEV  
12

HAZARDOUS  
CARGO  
PAD

FIELD  
ELEV  
13

HAZARDOUS  
CARGO  
PAD

FIELD  
ELEV  
13

HAZARDOUS  
CARGO  
PAD

FIELD  
ELEV  
13

HAZARDOUS  
CARGO  
PAD

FIELD  
ELEV  
13

HAZARDOUS  
CARGO  
PAD

FIELD  
ELEV  
13

HAZARDOUS  
CARGO  
PAD

FIELD  
ELEV  
13

D-ATIS  
127.9 251.15  
HONOLULU TOWER  
118.1 257.8  
123.9 273.575 (RWY 08R-26L)  
GND CON  
121.9 348.6  
GND CON (RAMP CON)  
121.8  
CUNIC DEL  
121.4

FIRE STATION

TRAIN ALERT

HAWAII  
ANG

RWY 04L-22R

PCN 31 F/B/X/T

S-100, D-200, 2D-400,  
2D/D1-450, 2D/2D2-850

RWY 09R-24L

PCN 57 F/B/X/T

S-100, D-200, 2D-400,  
2D/D1-450, 2D/2D2-850

RWY 08L-26R

PCN 79 R/B/W/T

S-100, D-200, 2D-400,  
2D-400, 2D/D1-400,  
2D/2D2-780, C5-840

RWY 08R-26L

PCN 98 F/B/X/T

S-80, D-170, 2D-400,  
2D/D1-415, 2D/2D2-780, C5-780

# AIRPORT DIAGRAM

HONOLULU, HAWAII

## DANIEL K INOUE INTL (HNL) (PHNL)

PAC, 08 NOV 2018 to 03 JAN 2019

PAC, 08 NOV 2018 to 03 JAN 2019