

D-ATIS
135.0
FORT LAUDERDALE TOWER
119.3 257.8
GND CON
121.4
CLNC DEL
128.4
CPDLC

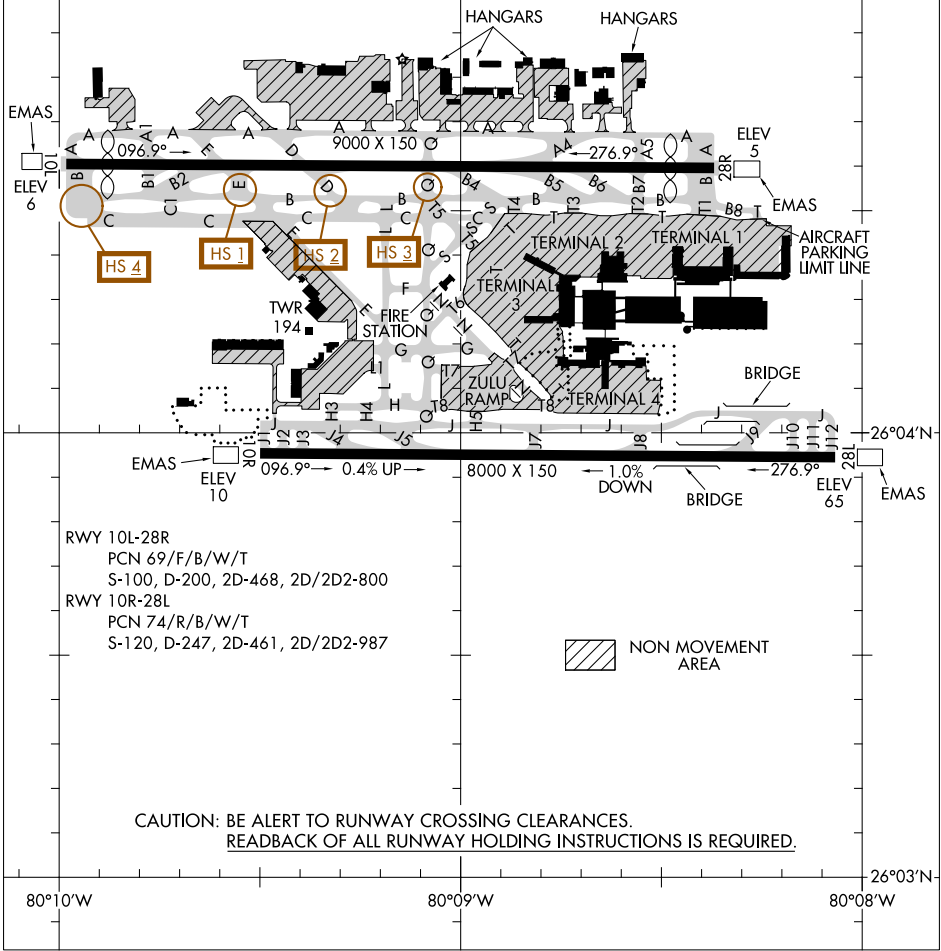
FIELD
ELEV
65

VAR 65° W
212 A
JANUARY 2015
ANNUAL RATE OF CHANGE
0.1° W

ASDE-X in use. Operate transponders with altitude reporting mode and ADS-B (if equipped) enabled on all airport surfaces.
Runway Status Lights in operation.

SE-3, 06 DEC 2018 to 03 JAN 2019

SE-3, 06 DEC 2018 to 03 JAN 2019



RWY 10L-28R
PCN 69/F/B/W/T
S-100, D-200, 2D-468, 2D/2D2-800
RWY 10R-28L
PCN 74/R/B/W/T
S-120, D-247, 2D-461, 2D/2D2-987

NON MOVEMENT
AREA

CAUTION: BE ALERT TO RUNWAY CROSSING CLEARANCES.
READBACK OF ALL RUNWAY HOLDING INSTRUCTIONS IS REQUIRED.