


WAAS CH 61110 W32A	APP CRS 319°	Rwy Idg TDZE Apt Elev	8102 750 755
--	------------------------	-----------------------------	---

RNAV (GPS) RWY 32R

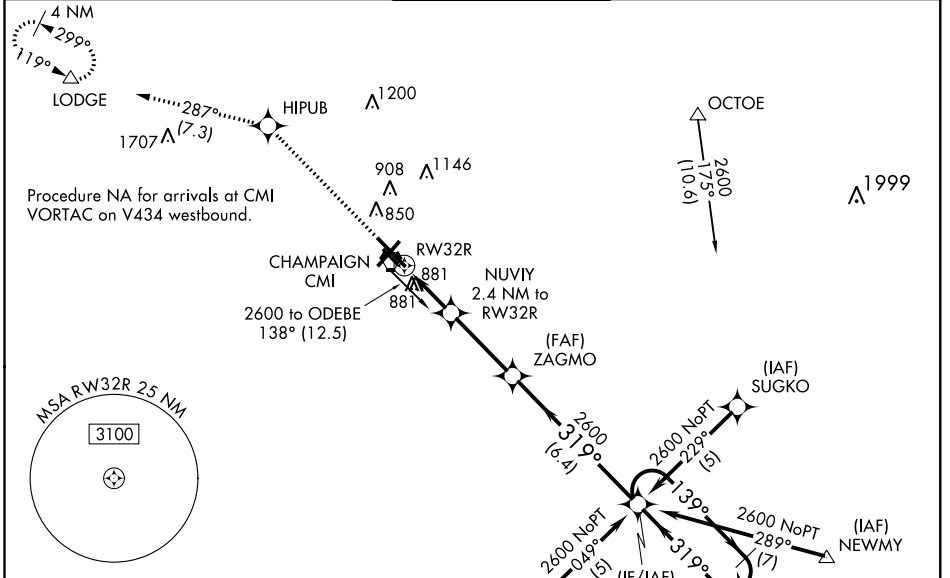
UNIVERSITY OF ILLINOIS-WILLARD (CMI)

▲ For uncompensated Baro-VNAV systems, LNAV/VNAV NA below -19° C (-2° F) or above 54° C (130° F). DME/DME RNP-0.3 NA. Baro-VNAV and VDP NA when using Rantoul altimeter setting. When local altimeter setting not received, use Rantoul altimeter setting and increase all DA 41 feet, all MDA 60 feet; increase LNAV Cat C/D visibility to RVR 5500. For inoperative MALS, when using local or Rantoul altimeter setting, increase LNAV Cat C/D visibility to 1/2 miles.

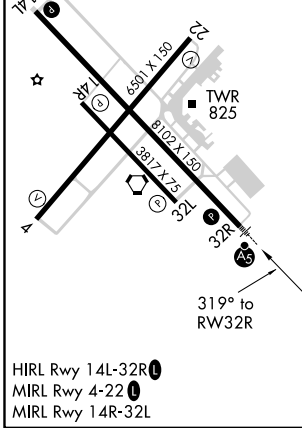
MALS 



MISSED APPROACH: Climb to 2800 direct HIPUB and on track 287° to LODGE and hold.

ATIS 124.85	CHAMPAIGN APP CON * 121.35 285.65 (316°-135°) 132.85 290.225 (136°-315°)	CHAMPAIGN TOWER * 120.4 (CTAF) 0 229.4	GND CON 121.8	CLNC DEL 128.75	UNICOM 122.95
-----------------------	--	--	-------------------------	---------------------------	-------------------------



ELEV 755	D	TDZE 750
----------	----------	----------



2800	HIPUB	LODGE	ZAGMO	ODEBE	4 NM Holding Pattern
↑		tr 287°			
*LNAV only		NUVIY 2.4 NM to RW32R	2600	319°	2600
*1 NM to RW32R				139°	GP 3.00° TCH 52
*1560					
→ 1 NM		1.4 NM	3.2 NM	6.4 NM	
CATEGORY	A	B	C	D	
LPV DA	1000/24		250 (300-1/2)		
LNAV/VNAV DA	1159/50		409 (500-1)		
LNAV MDA	1200/24	450 (500-1/2)	1200/45	450 (500-3/8)	
C CIRCLING	1240-1 485 (500-1)		1500-2 1/4 745 (800-2 1/4)	1500-2 1/2 745 (800-2 1/2)	

EC-3, 06 DEC 2018 to 03 JAN 2019

EC-3, 06 DEC 2018 to 03 JAN 2019