

WAAS CH 97619 W22A	APP CRS 224°	Rwy Idg TDZE Apt Elev	6501 750 755
--	------------------------	-----------------------------	---

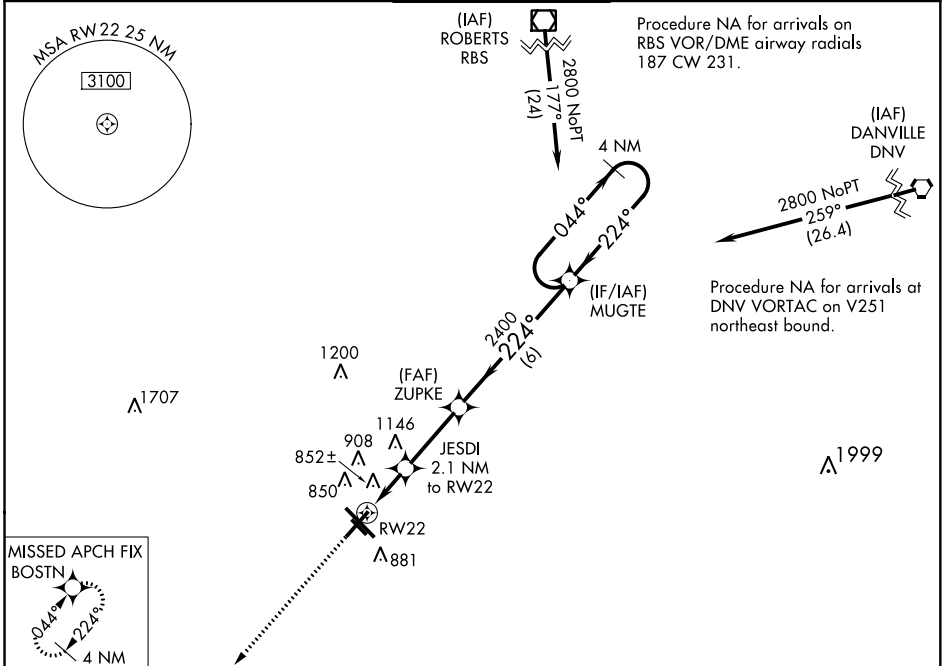
RNAV (GPS) RWY 22

UNIVERSITY OF ILLINOIS-WILLARD (CMI)

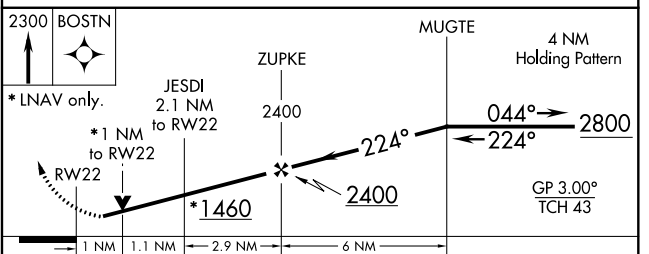
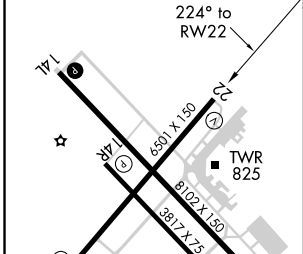
ASR For uncompensated Baro-VNAV systems, LNAV/VNAV NA below -21°C (-5°F) or above 54°C (130°F). DME/DME RNP-0.3 NA. When local altimeter setting not received, use Rantoul altimeter setting and increase all DA 41 feet and all MDA 60 feet; increase LNAV Cat C visibility ¼ mile. Baro-VNAV and VDP NA when using Rantoul altimeter setting.

MISSED APPROACH:
Climb to 2300 direct BOSTN and hold.

ATIS 124.85	CHAMPAIGN APP CON * 121.35 285.65 (316°-135°) 132.85 290.225 (136°-315°)	CHAMPAIGN TOWER * 120.4 (CTAF) 0 229.4	GND CON 121.8	CLNC DEL 128.75	UNICOM 122.95
-----------------------	--	--	-------------------------	---------------------------	-------------------------



ELEV 755	D	TDZE 750
----------	----------	----------



CATEGORY	A	B	C	D
LPV DA	1000-1		250 (300-1)	
LNAV/VNAV DA	1219-1¾ 469 (500-1¾)			
LNAV MDA	1120-1 370 (400-1)		1120-1¼ 370 (400-1¼)	
C CIRCLING	1240-1 485 (500-1)		1500-2¼ 745 (800-2¼) 1500-2½ 745 (800-2½)	

HIRL Rwy 14L-32R
MIRL Rwy 4-22
MIRL Rwy 14R-32L

EC-3, 06 DEC 2018 to 03 JAN 2019

EC-3, 06 DEC 2018 to 03 JAN 2019