

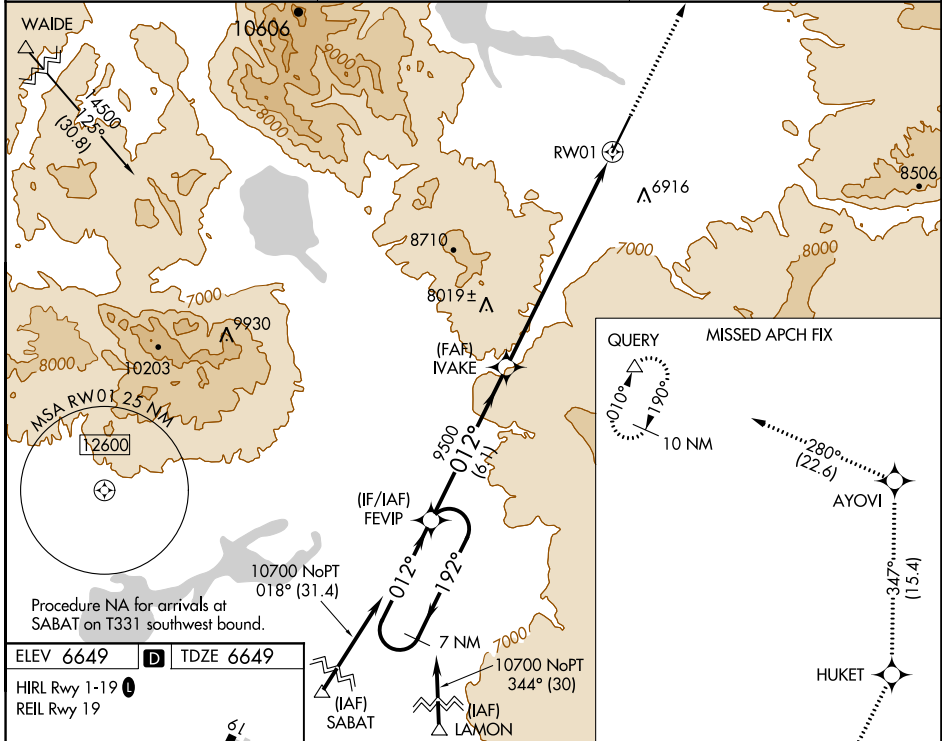
WAAS CH 86916 W01A	APP CRS 012°	Rwy Idg TDZE Apt Elev	8400 6649 6649
--	------------------------	-----------------------------	---

RNAV (GPS) RWY 1

YELLOWSTONE (WYS)

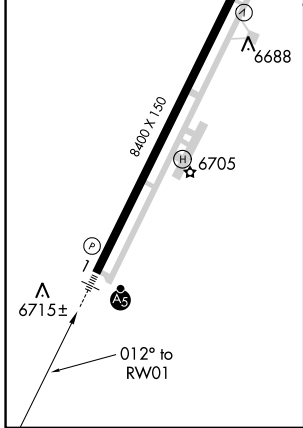
NA -19°C	DME/DME RNP-0.3 NA. Obtain local altimeter setting on CTAF; when not received, procedure NA. Inop table does not apply to LNAV Cats A and B.	MALSR 	MISSED APPROACH: Climb to 15000 direct HUKET and on track 347° to AYOVI and on track 280° to QUERY and hold.
-------------	--	-----------	--

AWOS-3P 118.1	SALT LAKE CENTER 132.4 338.3	UNICOM 123.0 (CTAF)
-------------------------	--	-------------------------------



Procedure NA for arrivals at SABAT on T331 southwest bound.

ELEV 6649	D	TDZE 6649
HIRL Rwy 1-19		
REIL Rwy 19		



7 NM Holding Pattern FEVIP	15000 HUKET	AYOVI	QUERY
	↑	tr 347°	tr 280°
			△
			*LNAV only

CATEGORY	A	B	C	D
LPV DA	6849-1/2 200 (200-1/2)			
LNAV MDA	8240-1 1/4 1591 (1600-1 1/4)	8240-1 1/2 1591 (1600-1 1/2)	8240-2 1/2 1591 (1600-2 1/2)	1591 (1600-3)
CIRCLING	8240-1 1/4 1591 (1600-1 1/4)	8240-1 1/2 1591 (1600-1 1/2)	8240-3	1591 (1600-3)

NW-1, 06 DEC 2018 to 03 JAN 2019

NW-1, 06 DEC 2018 to 03 JAN 2019