

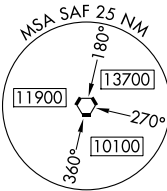
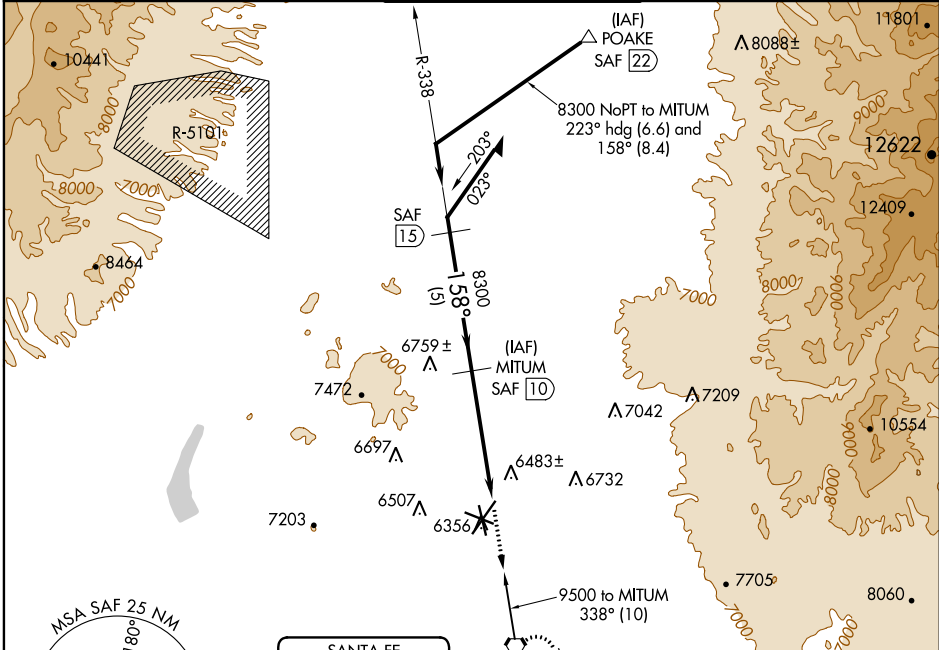
VORTAC SAF 110.6 Chan 43	APP CRS 158°	Rwy Idg TDZE Apt Elev N/A N/A 6348
---------------------------------------	------------------------	--

VOR/DME-A

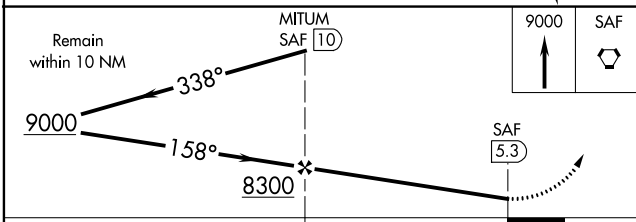
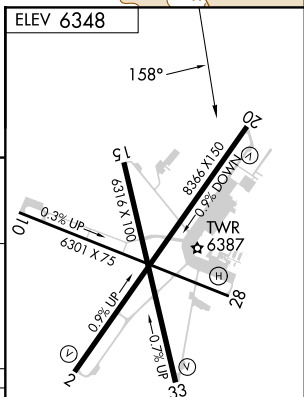
SANTA FE MUNI (SAF)

⚠ When control tower closed, except for operators with approved weather reporting service, use Albuquerque altimeter setting. **MISSSED APPROACH:** Climb to 9000 direct SAF VORTAC and hold, continue climb-in-hold to 9000.

ATIS 128.55	ALBUQUERQUE CENTER 132.8 346.35	SANTA FE TOWER * 119.5 (CTAF) 0 239.3	GND CON 121.7	UNICOM 122.95
-----------------------	---	---	-------------------------	-------------------------



SANTA FE
110.6 SAF
Chan 43



CATEGORY	A	B	C	D
CIRCLING	6960-1	612 (700-1)	6960-1¾ 612 (700-1¾)	7020-2¼ 672 (700-2¼)
ALBUQUERQUE ALTIMETER SETTING MINIMUMS				
CIRCLING	7860-1¼ 1512 (1600-1¼)	7860-1½ 1512 (1600-1½)	7860-3 1512 (1600-3)	7920-3 1572 (1600-3)

REIL Rwy 10, 15, 20 and 33
MIRL Rwy 2-20 and 15-33 *
MIRL Rwy 10-28

SW-1, 06 DEC 2018 to 03 JAN 2019

SW-1, 06 DEC 2018 to 03 JAN 2019