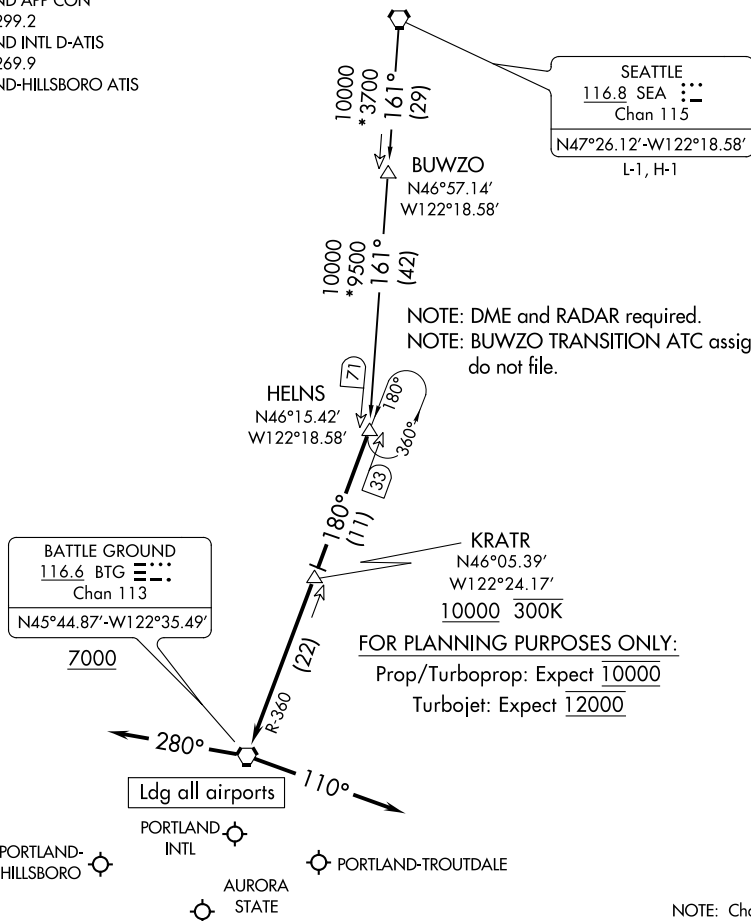


(HELNS.HELNS6) 18088
HELNS SIX ARRIVAL

AL-330 (FAA)

PORTLAND, OREGON

PORTLAND APP CON
 124.35 299.2
 PORTLAND INTL D-ATIS
 128.35 269.9
 PORTLAND-HILLSBORO ATIS
 127.65



FOR PLANNING PURPOSES ONLY:

Prop/Turboprop: Expect 10000
 Turbojet: Expect 12000

NOTE: Chart not to scale.

ARRIVAL ROUTE DESCRIPTION

BUWZO TRANSITION (BUWZO.HELNS6): From over BUWZO via SEA R-161 to HELNS. Thence. . . .

SEATTLE TRANSITION (SEA.HELNS6): From over SEA VORTAC via SEA R-161 to HELNS. Thence. . . .

. . . . from over HELNS on BTG VORTAC R-360 to cross KRATR at or above 10000, then as depicted to cross BTG VORTAC at or above 7000.

LANDING EAST: From BTG VORTAC heading 280°, expect RADAR vectors to final approach course.

LANDING WEST: From BTG VORTAC heading 110°, expect RADAR vectors to final approach course.

HELNS SIX ARRIVAL
 (HELNS.HELNS6) 29MAR18

PORTLAND, OREGON

NW-1, 06 DEC 2018 to 03 JAN 2019

NW-1, 06 DEC 2018 to 03 JAN 2019