

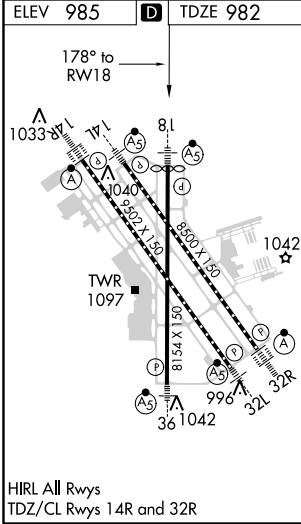
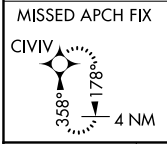
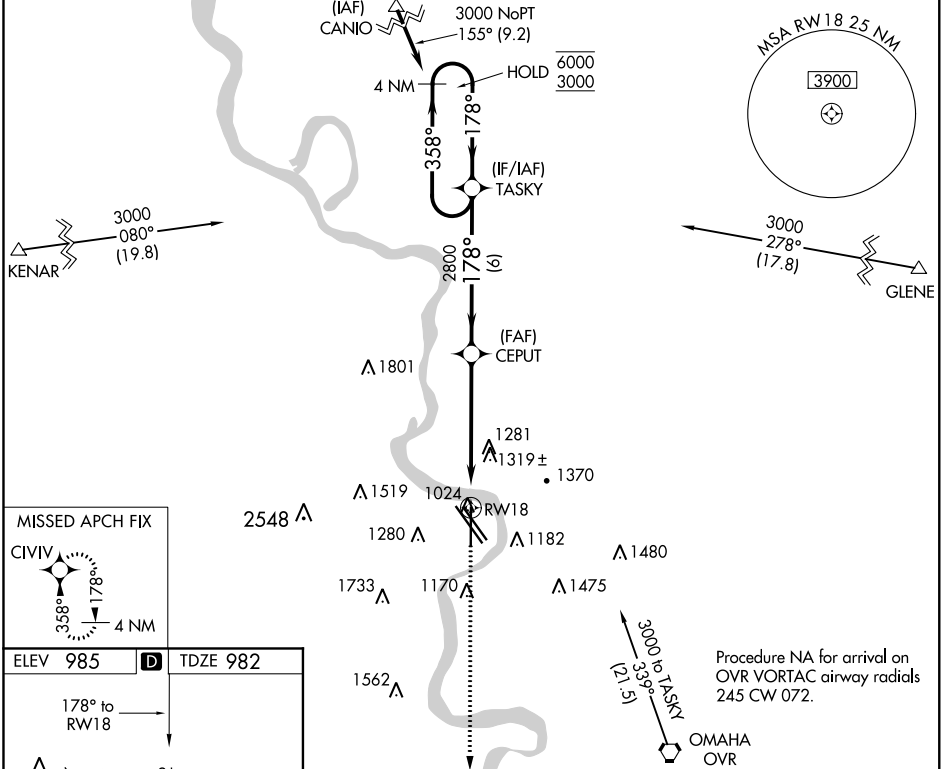
WAAS CH 65617 W18A	APP CRS 178°	Rwy Idg 8013 TDZE 982 Apt Elev 985
--	------------------------	---

RNAV (GPS) Y RWY 18

EPPLEY AIRFIELD (OMA)

RNP APCH.	MALSR	MISSED APPROACH: Climb to 3000 direct CIVIV and hold.
For uncompensated Baro-VNAV systems, procedure NA below -19°C or above 54°C. # RVR 1800 authorized with use of FD or AP or HUD to DA.		

D-ATIS 120.4	OMAHA APP CON 120.1 354.05	OMAHA TOWER 132.1 256.9	GND CON 121.9	CLNC DEL 119.9
------------------------	--------------------------------------	-----------------------------------	-------------------------	--------------------------



4 NM Holding Pattern	TASKY	CEPUT	3000 CIVIV
6000 ← 358°	→ 178°	→ 178°	* 1.5 NM to RWY 18
3000		2800	* LNAV only
GP 3.00°		2800	
TCH 52		2800	
	6 NM	4.1 NM	1.5
CATEGORY	A	B	C
LPV DA #		1182/24	200 (200-½)
LNAV/VNAV DA		1540/60	558 (600-1¼)
LNAV MDA	1520/24	538 (600-½)	1520/55 538 (600-1)
CIRCLING	1660-1 675 (700-1)	1680-1 695 (700-1)	2000-3 1015 (1100-3)
			2040-3 1055 (1100-3)

NC-2, 06 DEC 2018 to 03 JAN 2019

NC-2, 06 DEC 2018 to 03 JAN 2019