


APP CRS	Rwy Idg	<b>8153</b>
<b>358°</b>	TDZE	<b>979</b>
	Apt Elev	<b>985</b>

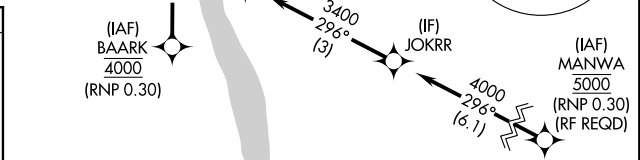
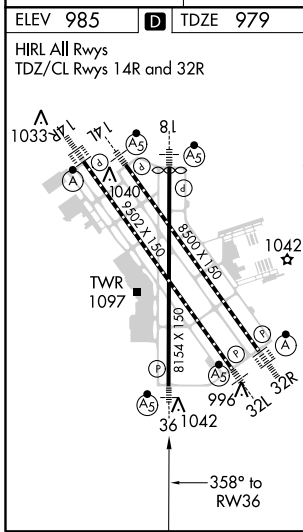
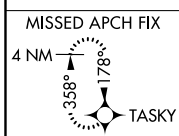
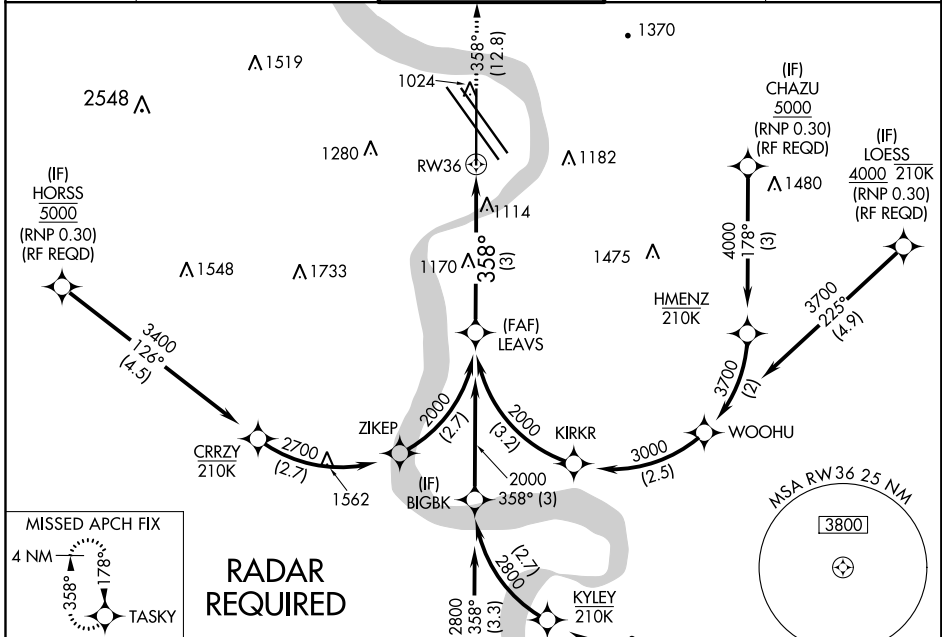
# RNAV (RNP) Z RWY 36


EPPLEY AIRFIELD (OMA)

**▼** For uncompensated Baro-VNAV systems, procedure NA below -19°C (-2°F) or above 54°C (130°F). When VGSI inop, procedure NA at night. For inop ALS, increase RNP 0.30 all Cats visibility to 1½ SM. GPS required.

MALSR  MISSED APPROACH: Climb to 3000 on track 358° to TASKY and hold.

D-ATIS <b>120.4</b>	OMAHA APP CON <b>120.1 354.05</b>	OMAHA TOWER <b>132.1 256.9</b>	GND CON <b>121.9</b>	CLNC DEL <b>119.9</b>
------------------------	--------------------------------------	-----------------------------------	-------------------------	--------------------------



LEAVS	See planview for multiple IF locations.	3000	TASKY
2000		↑	
2000		↑	fr 358°
GP 3.00°			
TCH 58			

CATEGORY	A	B	C	D
RNP 0.30 DA		1425-1	446 (500-1)	

## AUTHORIZATION REQUIRED

NC-2, 06 DEC 2018 to 03 JAN 2019

NC-2, 06 DEC 2018 to 03 JAN 2019