

# RNAV (RNP) Z RWY 32R

EPPLEY AIRFIELD (OMA)

APP CRS <b>322°</b>	Rwy Idg <b>8500</b>
	TDZE <b>981</b>
	Apt Elev <b>985</b>

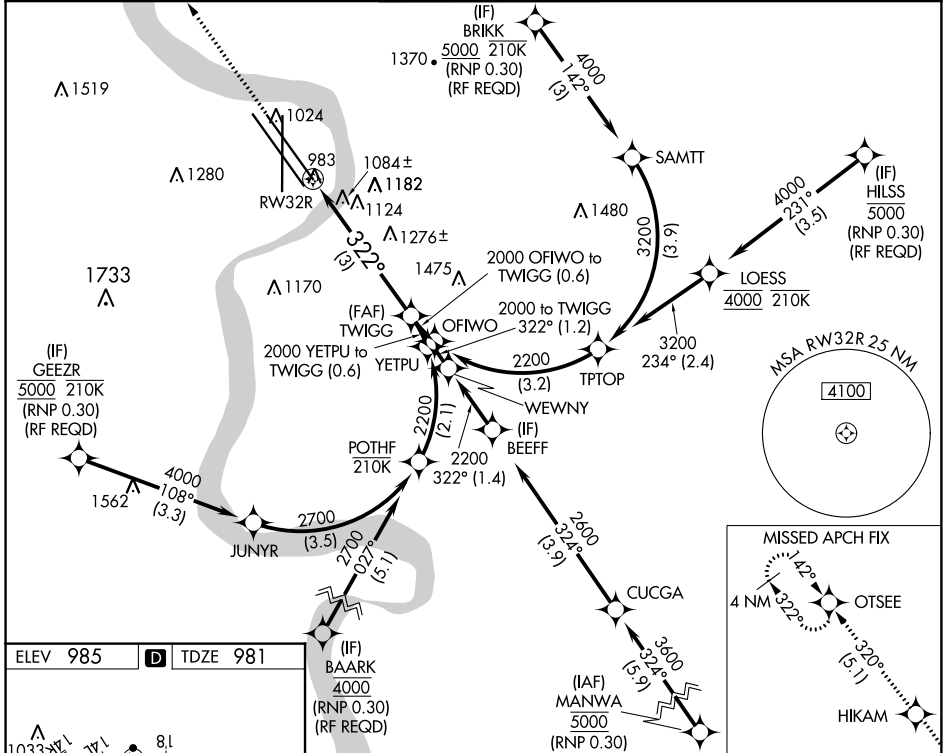
RNP AR APCH. RF required.

▼ For uncompensated Baro-VNAV systems, procedure NA below -19°C or above 54°C. For inop ALS, increase RNP 0.30 all Cats visibility to 1½ SM.

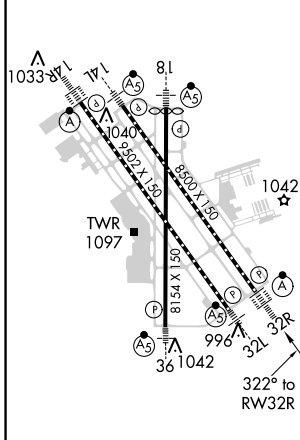
ALS-F-2

MISSED APPROACH: Climb to 3300 direct HIKAM and track 320° to OTSEE and hold.

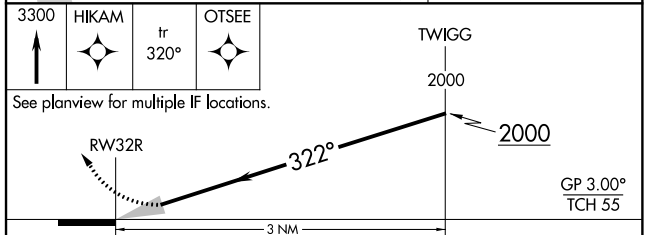
D-ATIS <b>120.4</b>	OMAHA APP CON <b>120.1 354.05</b>	OMAHA TOWER <b>132.1 256.9</b>	GND CON <b>121.9</b>	CLNC DEL <b>119.9</b>
------------------------	--------------------------------------	-----------------------------------	-------------------------	--------------------------



ELEV 985	<b>D</b>	TDZE 981
----------	----------	----------



HIRL All Rwys  
TDZ/CL Rwys 14R and 32R



CATEGORY	A	B	C	D
RNP 0.11 DA		1313/26	332 (400-½)	
RNP 0.15 DA		1407/40	426 (500-¾)	
RNP 0.30 DA		1607-1⅓	626 (700-1⅓)	

**AUTHORIZATION REQUIRED**

NC-2: 06 DEC 2018 to 03 JAN 2019

NC-2: 06 DEC 2018 to 03 JAN 2019