

APP CRS	Rwy Idg	8013
	TDZE	982
178°	Apt Elev	985

RNAV (RNP) Z RWY 18

EPPLEY AIRFIELD (OMA)

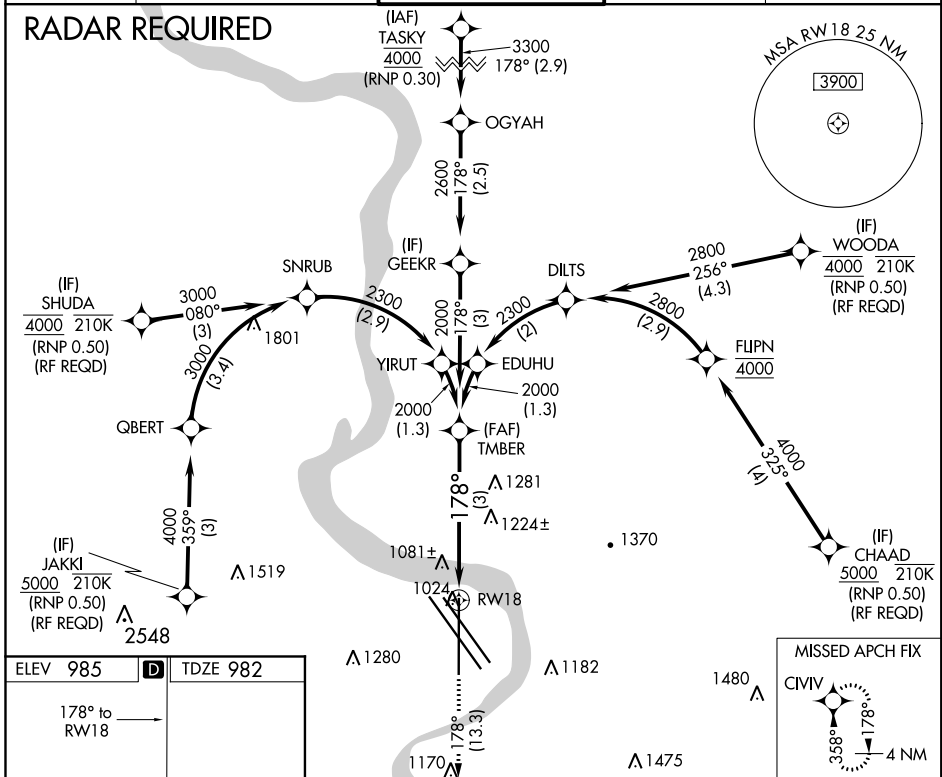
▼ For uncompensated Baro-VNAV systems, procedure NA below -17°C (2°F) or above 54°C (130°F). For inoperative ALS, increase RNP 0.15 all Cats visibility to 1½ and RNP 0.30 all Cats visibility to 2. GPS required.



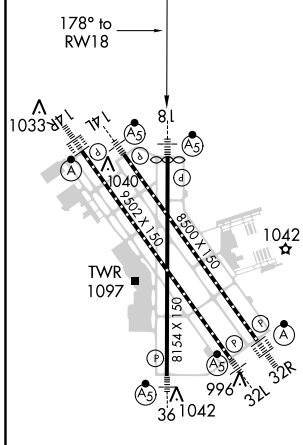
MISSED APPROACH: Climb to 3000 on track 178° to CIVIV and hold.

D-ATIS	OMAHA APP CON	OMAHA TOWER	GND CON	CLNC DEL
120.4	120.1 354.05	132.1 256.9	121.9	119.9

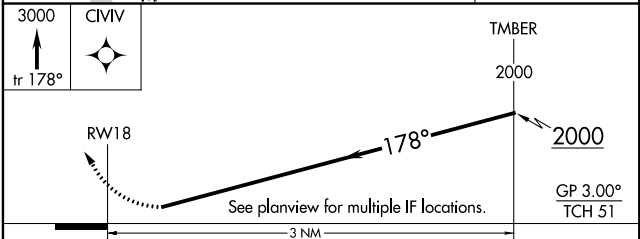
RADAR REQUIRED



ELEV 985	D	TDZE 982
----------	----------	----------



HIRL All Rwys
TDZ/CL Rwys 14R and 32R



CATEGORY	A	B	C	D
RNP 0.15 DA		1341/40	359 (400-¾)	
RNP 0.30 DA		1576-1½	594 (600-1½)	

AUTHORIZATION REQUIRED

NC-2, 06 DEC 2018 to 03 JAN 2019

NC-2, 06 DEC 2018 to 03 JAN 2019