

# RNAV (RNP) Z RWY 14L

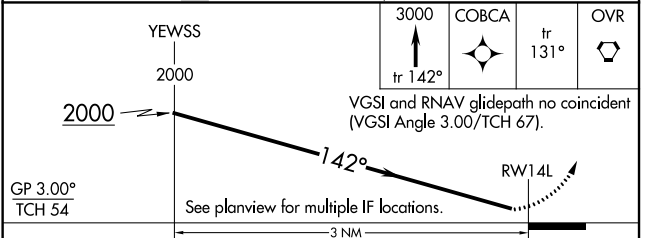
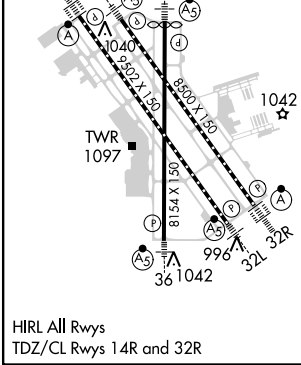
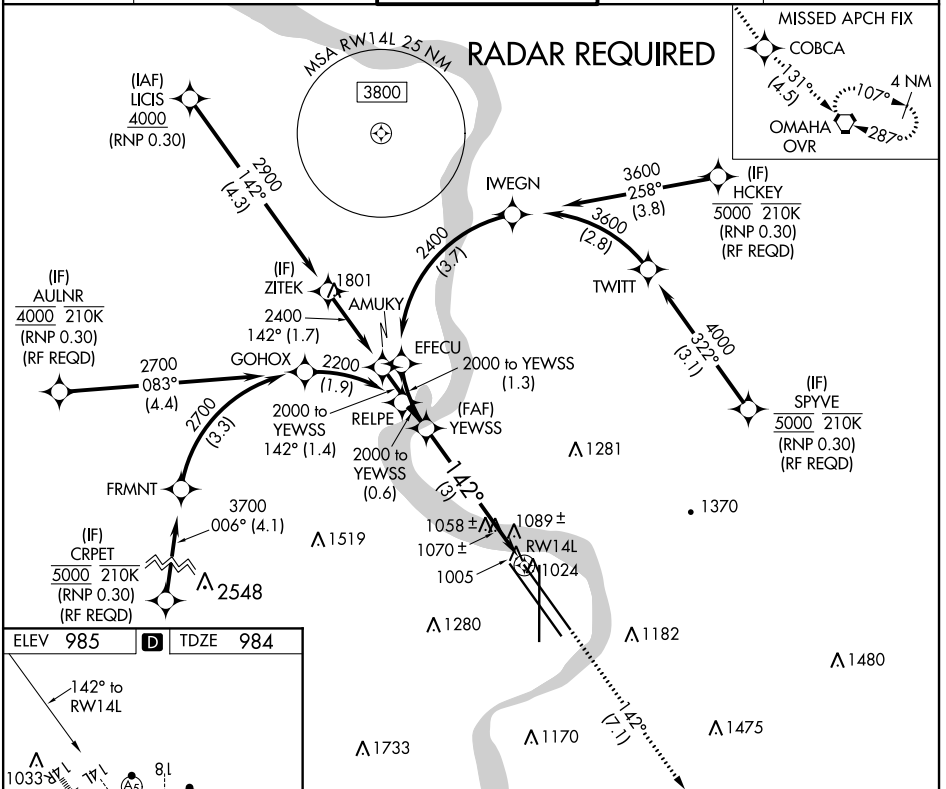
EPPLEY AIRFIELD (OMA)

APP CRS <b>142°</b>	Rwy Idg <b>8500</b>
	TDZE <b>984</b>
	Apt Elev <b>985</b>

**▼** For uncompensated Baro-VNAV systems, procedure NA below -17°C (2°F) or above 54°C (130°F). For inoperative ALS, increase RNP 0.15 all Cats visibility to 1 ½ and RNP 0.30 all Cats visibility to 1 ¾. GPS required.

MALSRL 	MISSED APPROACH: Climb to 3000 on track 142° to COBCA and on track 131° to OVR VORTAC and hold.
------------	---

D-ATIS <b>120.4</b>	OMAHA APP CON <b>120.1 354.05</b>	OMAHA TOWER <b>132.1 256.9</b>	GND CON <b>121.9</b>	CLNC DEL <b>119.9</b>
------------------------	--------------------------------------	-----------------------------------	-------------------------	--------------------------



CATEGORY	A	B	C	D
RNP 0.15 DA		1335/40	351 (400-¾)	
RNP 0.30 DA		1395/45	411 (500-¾)	

**AUTHORIZATION REQUIRED**

NC-2, 06 DEC 2018 to 03 JAN 2019

NC-2, 06 DEC 2018 to 03 JAN 2019