

PAWNEE CITY ONE ARRIVAL

AL-304 (FAA)

OMAHA, NEBRASKA

ARRIVAL ROUTE DESCRIPTION

From over PWE VORTAC via PWE R-001 to TIMMO INT/28 DME to MOONNR INT/42 DME. Thence

. . . . EPPLEY AIRFIELD (OMA):

RUNWAYS 14L/R, 18: To MEPWE INT/53 DME, depart MEPWE INT via heading 355°, expect RADAR vectors to final approach course.

RUNWAYS 32L/R, 36: Depart MOONNR INT via heading 042°, expect RADAR vectors to final approach course.

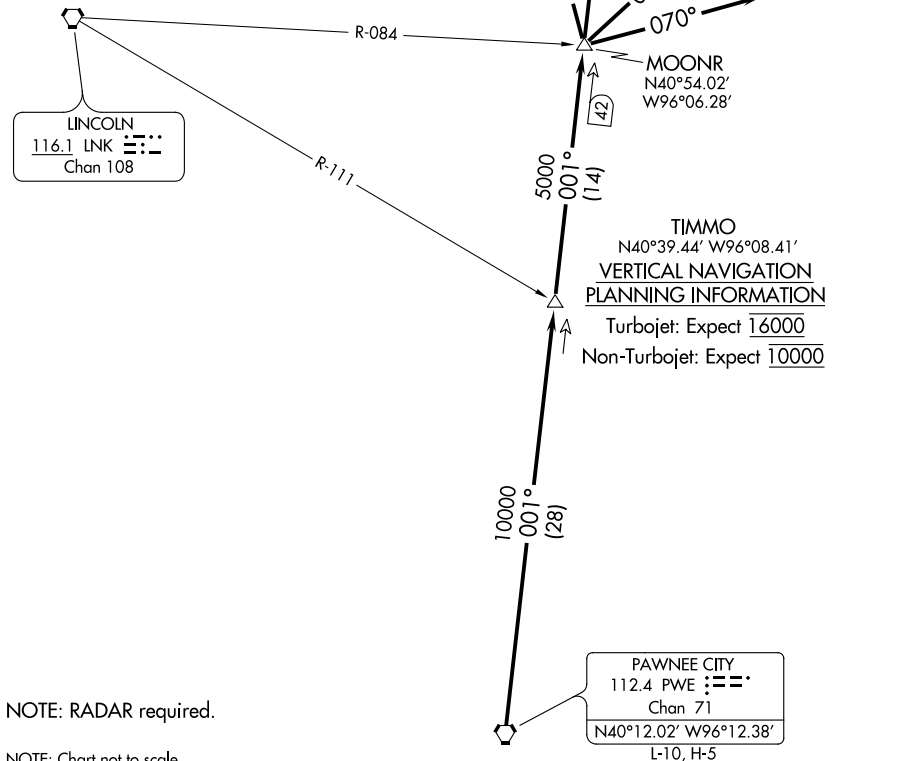
. . . . OFFUT AFB (OFF):

RUNWAY 12: Depart MOONNR INT via heading 340°, expect RADAR vectors to final approach course.

RUNWAY 30: Depart MOONNR INT via heading 070°, expect RADAR vectors to final approach course.

EPPLEY AIRFIELD D-ATIS
120.4
OFFUTT AFB ATIS
126.025 273.5
OMAHA APP CON
124.5 263.0 EAST
120.1 354.05 WEST

 EPPLEY AIRFIELD



NC-2, 06 DEC 2018 to 03 JAN 2019

NC-2, 06 DEC 2018 to 03 JAN 2019

PAWNEE CITY ONE ARRIVAL

OMAHA, NEBRASKA