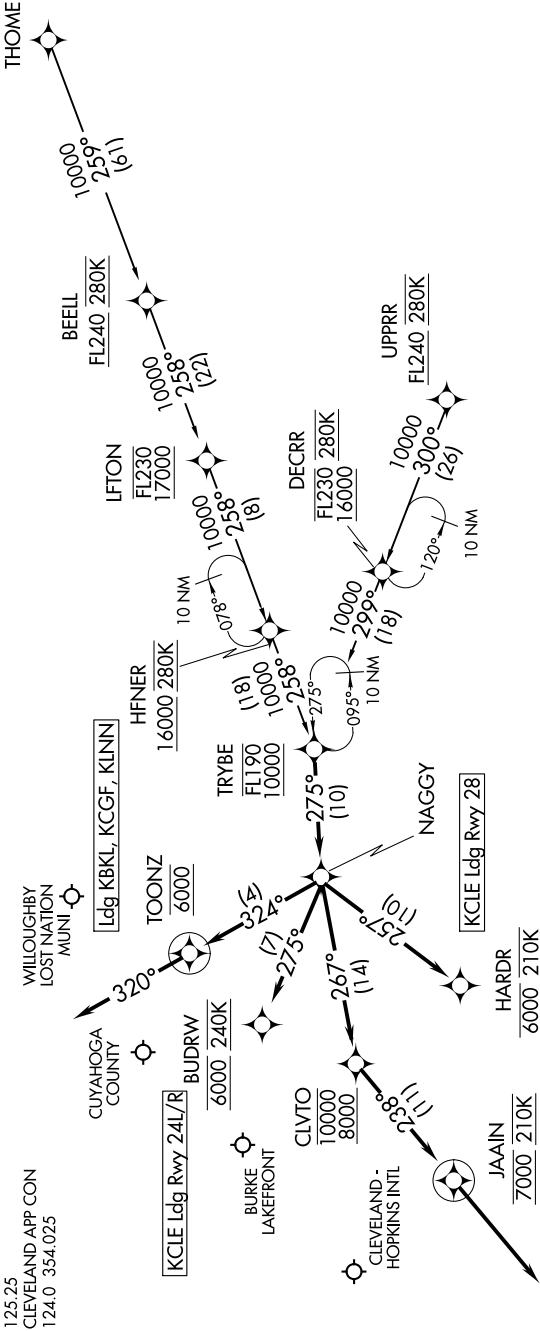
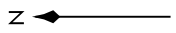


EC-2, 06 DEC 2018 to 03 JAN 2019

CLEVELAND HOPKINS D-ATIS
127.85
BURKE LAKEFRONT ATIS
125.25
CLEVELAND APP CON
124.0 354.025



- NOTE: RADAR required.
- NOTE: RNAV 1.
- NOTE: DME/DME/IRU or GPS required.
- NOTE: Jet aircraft expect "descend via" clearance from Cleveland Center.
- NOTE: Jet aircraft descend via MACH number until intercepting 280K. Maintain 280K until slowed by the STAR.
- NOTE: CLE LANDING SOUTH: Use Rwy 24R transition, expect runway assignment prior to TRYBE.
- NOTE: CLE LANDING NORTH: Use Rwy 6L transition, expect runway assignment prior to TRYBE.



(NARRATIVE ON FOLLOWING PAGE)

NOTE: Chart not to scale.

EC-2, 06 DEC 2018 to 03 JAN 2019