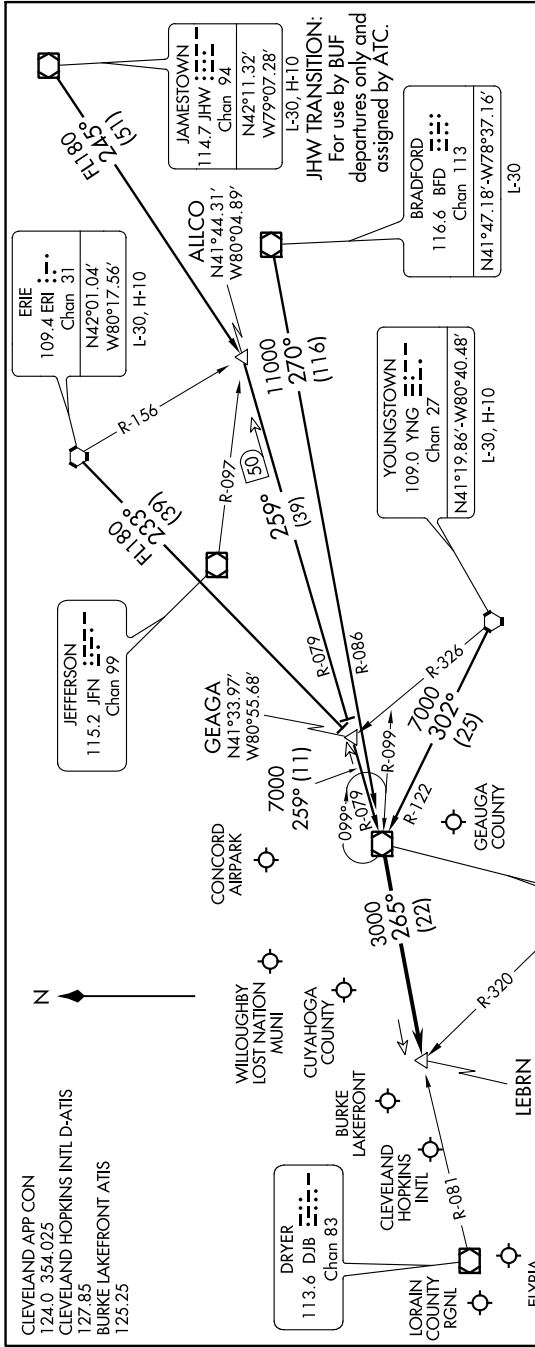


CHARDON THREE ARRIVAL

AL-84 (FAA)

CLEVELAND, OHIO

EC-2: 06 DEC 2018 to 03 JAN 2019



ARRIVAL ROUTE DESCRIPTION

BRADFORD TRANSITION (BFD.CXR3): From over BFD VOR/DME via BFD R-270 and CXR R-086 to CXR VOR/DME. Thence

ERIE TRANSITION (ERI.CXR3): From over ERI VORTAC via ERI R-233 to GEAGA INT, then via CXR R-079 to CXR VOR/DME. Thence

JAMESTOWN TRANSITION (JHW.CXR3): From over JHW VOR/DME via JHW R-245 to ALICO INT, then via CXR R-079 to CXR VOR/DME. Thence

YOUNGSTOWN TRANSITION (YNG.CXR3): From over YNG VORTAC via YNG R-302 and CXR R-122 to CXR VOR/DME. Thence

. From CXR VOR/DME via R-265 to LEBRN INT, thence expect vectors to final approach course.

CHARDON THREE ARRIVAL

CLEVELAND, OHIO

EC-2: 06 DEC 2018 to 03 JAN 2019

- CLEVELAND APP CON
124.0 354.025
- CLEVELAND HOPKINS INTL D-ATIS
127.85
- BURKE LAKEFRONT ATIS
125.25

- WILLOUGHBY LOST NATION MUNI
- CUYAHOGA COUNTY
- BURKE LAKEFRONT
- LEBRN
N41°27.13' W81°38.60'
- CHARDON
112.7 CXR
Chan 74
N41°31.02'-W81°09.79'
- AKRON
114.4 ACO
Chan 91

- JEFFERSON
115.2 JFN
Chan 99
- GEAGA
N41°33.97' W80°55.68'
- YOUNGSTOWN
109.0 YNG
Chan 27
N41°19.86'-W80°40.48'
- CONCORD AIRPARK
- LEBRN
N41°27.13' W81°38.60'
- CHARDON
112.7 CXR
Chan 74
N41°31.02'-W81°09.79'
- AKRON
114.4 ACO
Chan 91

- ERIE
109.4 ERI
Chan 31
N42°01.04' W80°17.56'
- JAMESTOWN
114.7 JHW
Chan 94
N42°11.32' W79°07.28'
- BRADFORD
116.6 BFD
Chan 113
N41°47.18'-W78°37.16'
- ALICO
N41°44.31' W80°04.89'

- DRYER
113.6 DJB
Chan 83
- CLEVELAND HOPKINS INTL
113.6 DJB
Chan 83
- LEBRN
N41°27.13' W81°38.60'
- CHARDON
112.7 CXR
Chan 74
N41°31.02'-W81°09.79'
- AKRON
114.4 ACO
Chan 91

NOTE: Radar required.
NOTE: Chart not to scale.

VERTICAL NAVIGATION
PLANNING INFORMATION
TURBOJET: Expect 10000.
PROPS: Expect 9000.