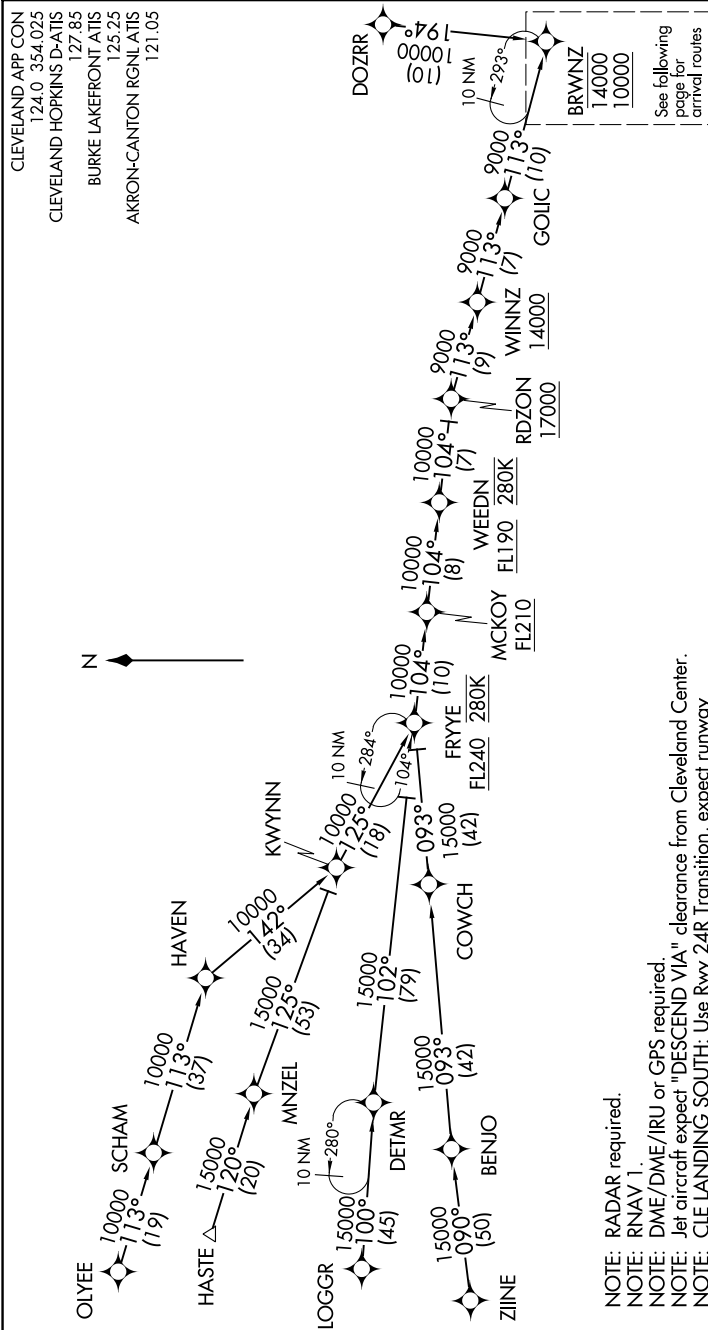


BRWNZ ONE ARRIVAL (RNAV) Transition Routes

CLEVELAND, OHIO

EC-2. 06 DEC 2018 to 03 JAN 2019



- DOZRR TRANSITION (DOZRR.BRWNZ1)
- HASTE TRANSITION (HASTE.BRWNZ1)
- LOGGR TRANSITION (LOGGR.BRWNZ1)
- OLYEE TRANSITION (OLYEE.BRWNZ1)
- WINNZ TRANSITION (WINNZ.BRWNZ1)
- ZIINE TRANSITION (ZIINE.BRWNZ1)

- NOTE: RADAR required.
- NOTE: RNAV 1.
- NOTE: DME/DME/IRU or GPS required.
- NOTE: Jet aircraft expect "DESCEND VIA" clearance from Cleveland Center.
- NOTE: CLE LANDING SOUTH: Use Rwy 24R Transition, expect runway assignment from CLEVELAND APP CON prior to GOLLIC or DOZRR.
- NOTE: CLE LANDING NORTH: Use Rwy 6L Transition, expect runway assignment from CLEVELAND APP CON prior to GOLLIC or DOZRR.
- NOTE: OLYEE TRANSITION: Do not file - to be assigned by ATC.
- NOTE: DOZRR TRANSITION: Except for flights originating in Canada, do not file - to be assigned by ATC.
- NOTE: WINNZ TRANSITION: Do not file - to be assigned by ATC.

NOTE: Chart not to scale.

(CONTINUED ON FOLLOWING PAGE)

EC-2. 06 DEC 2018 to 03 JAN 2019

BRWNZ ONE ARRIVAL (RNAV) Transition Routes

CLEVELAND, OHIO