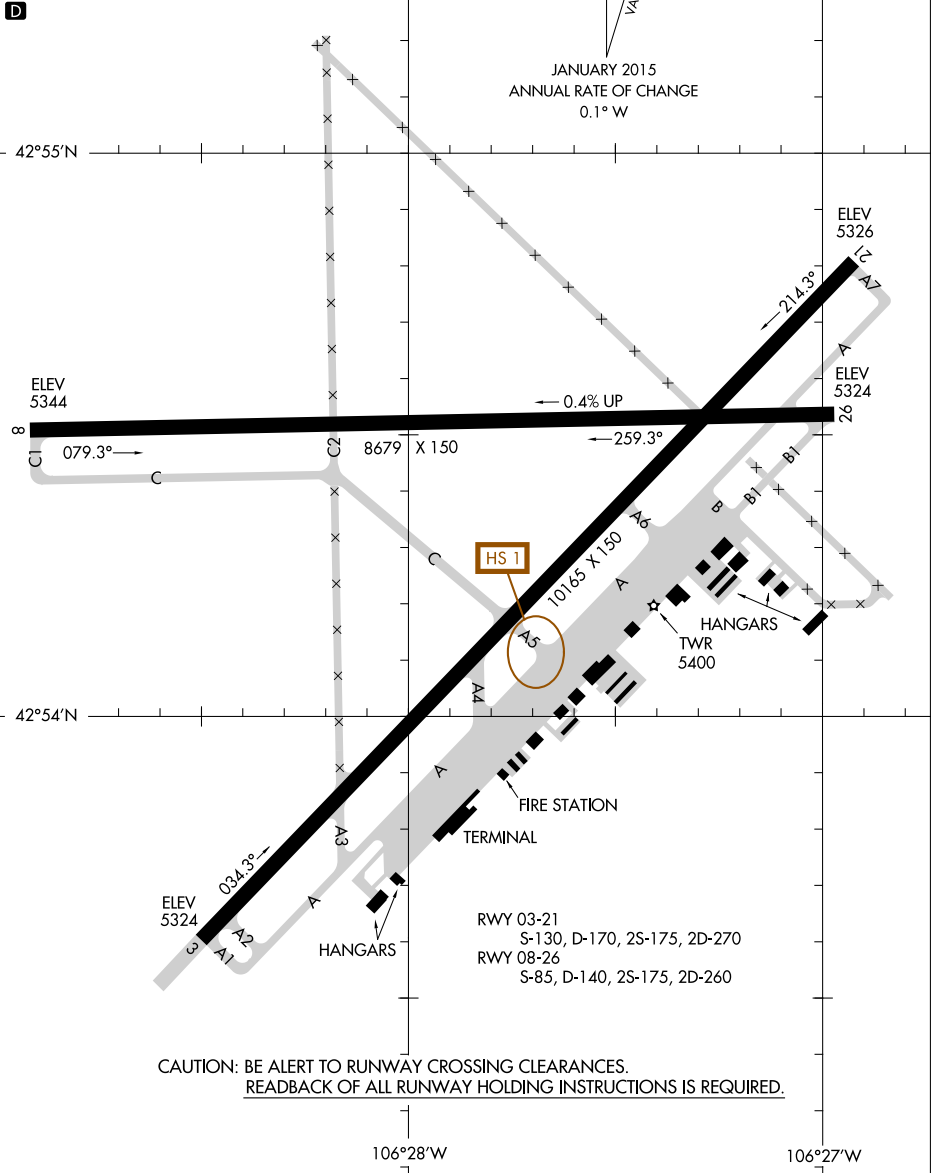


18032 **AIRPORT DIAGRAM** CASPER/NATRONA COUNTY INTL (CPR) AL-72 (FAA) CASPER, WYOMING

ATIS
126.15
CASPER TOWER*
118.3 257.8
GND CON
121.9
CLNC DEL
121.9 257.8

FIELD
ELEV
5344



NW-1, 06 DEC 2018 to 03 JAN 2019

NW-1, 06 DEC 2018 to 03 JAN 2019