

WAAS CH 58117 W23A	APP CRS 231°	Rwy Idg TDZE 33 Apt Elev 33	5000
--	------------------------	---	-------------

RNAV (GPS) RWY 23

OKEECHOBEE COUNTY (OBE)

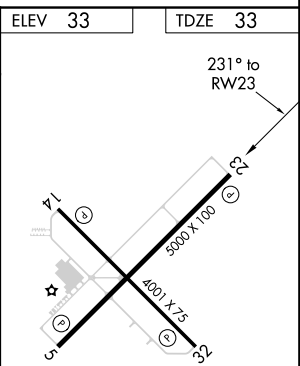
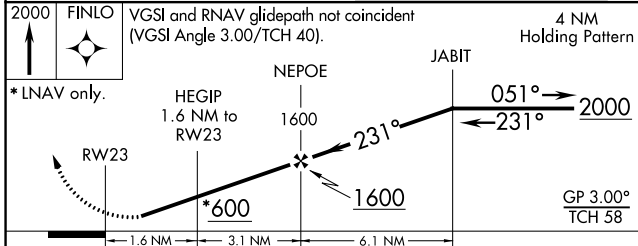
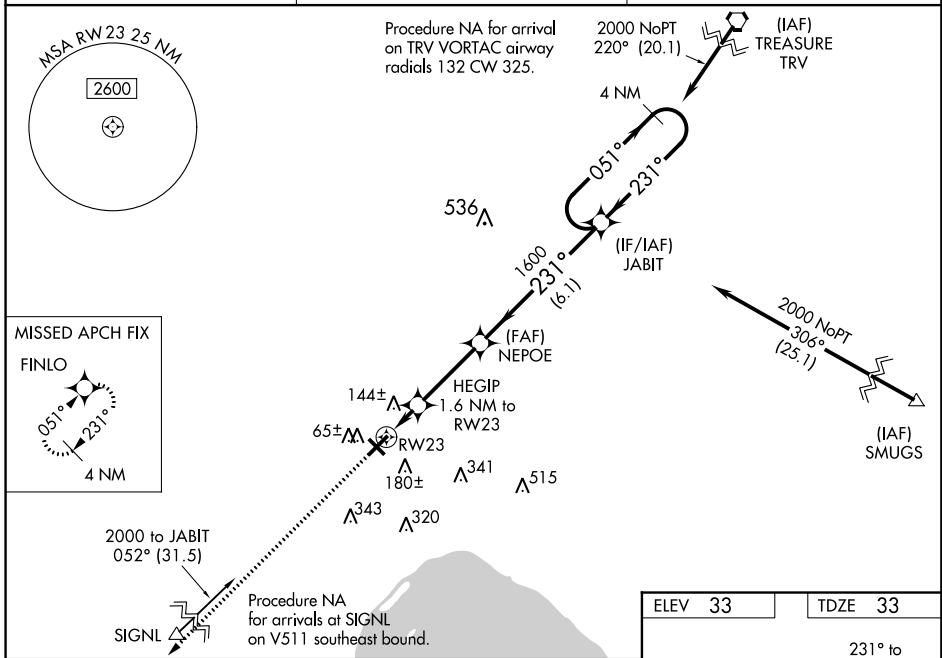
⚠ Baro-VNAV NA when using Vero Beach altimeter setting. For uncompensated Baro-VNAV systems, LNAV/VNAV NA below -2°C (29°F) or above 43°C (109°F). DME/DME RNP-0.3 NA. Helicopter visibility reduction below 1 SM NA. When local altimeter setting not received, use Vero Beach altimeter setting and increase all DA 77 feet and all MDA 80 feet, increase LPV all Cats visibility 1/8 mile, and increase LNAV/VNAV all Cats and LNAV Cats C and D visibility 3/8 mile. Procedure NA at night.

MISSED APPROACH:
Climb to 2000 direct FINLO and hold.

AWOS-3
118.675

MIAMI CENTER
132.25 370.9

UNICOM
123.0 (CTAF)



CATEGORY	A	B	C	D
LPV DA		315-1	282 (300-1)	
LNAV/VNAV DA		435-1¼	402 (500-1¼)	
LNAV MDA		400-1	367 (400-1)	
CIRCLING	500-1	467 (500-1)	500-1½ 467 (500-1½)	600-2 567 (600-2)

MIRL Rwy 5-23

REL Rws 5 and 23

SE-3, 08 NOV 2018 to 06 DEC 2018

SE-3, 08 NOV 2018 to 06 DEC 2018