

APP CRS	Rwy Idg	<b>5003</b>
<b>011°</b>	TDZE	<b>62</b>
	Apt Elev	<b>62</b>

# RNAV (GPS) RWY 1

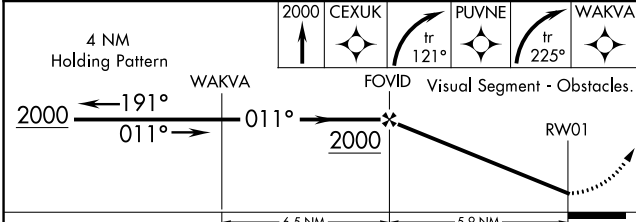
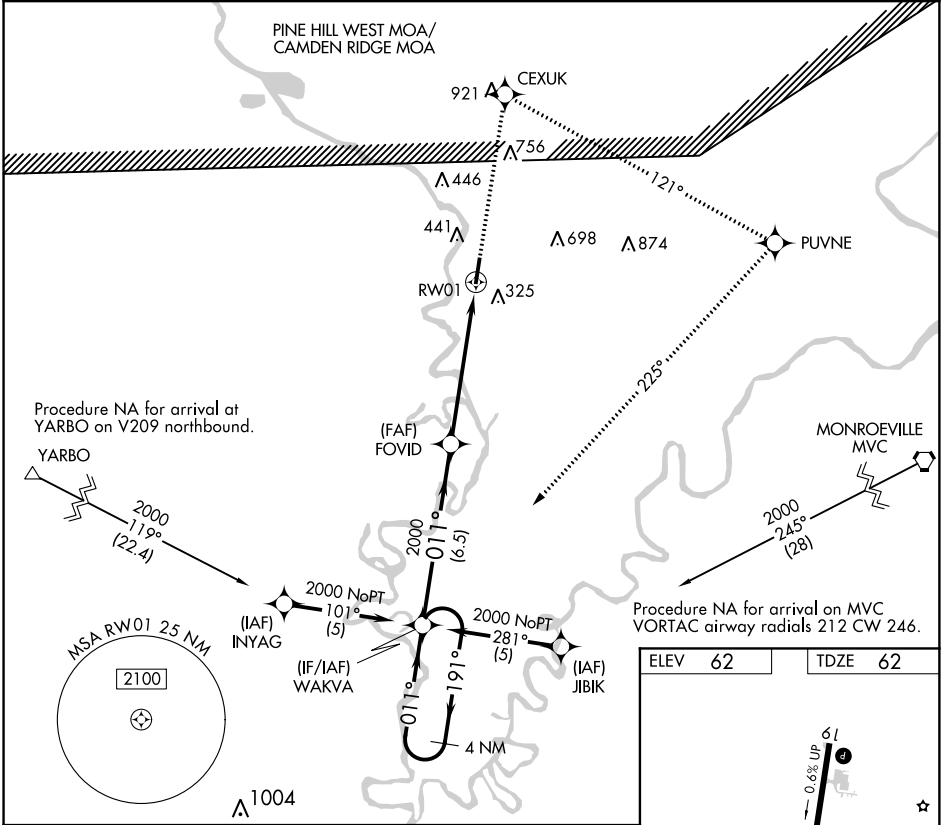
JACKSON MUNI (4R3)

RNP APCH.

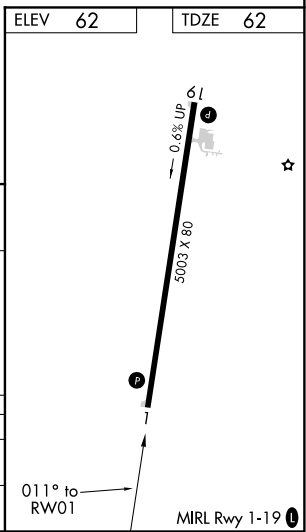
▼ Procedure NA at night. Rwy 1 helicopter visibility reduction below 1 SM NA. Use Evergreen altimeter setting; when not received, use Mobile Rgnl altimeter setting and increase all MDA 20 feet.  
 ▲ NA

MISSED APPROACH: Climb to 2000 direct CEXUK and right turn on track 121° to PUVNE and right turn on track 225° to WAKVA and hold.

EVERGREEN ASOS <b>133.425</b>	HOUSTON CENTER <b>127.65 285.475</b>	CTAF <b>122.9</b>
----------------------------------	---	----------------------



CATEGORY	A	B	C	D
LNVA MDA	900-1 838 (900-1)	900-1¼ 838 (900-1¼)	900-2½ 838 (900-2½)	900-2¾ 838 (900-2¾)
CIRCLING	980-1 ¼	918 (1000-1¼)	980-2¾ 918 (1000-2¾)	1000-3 938 (1000-3)



SE-4, 08 NOV 2018 to 06 DEC 2018

SE-4, 08 NOV 2018 to 06 DEC 2018