

APP CRS	Rwy Idg	5001
095°	TDZE	684
	Apt Elev	684

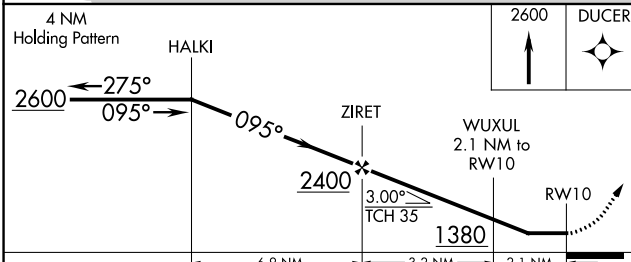
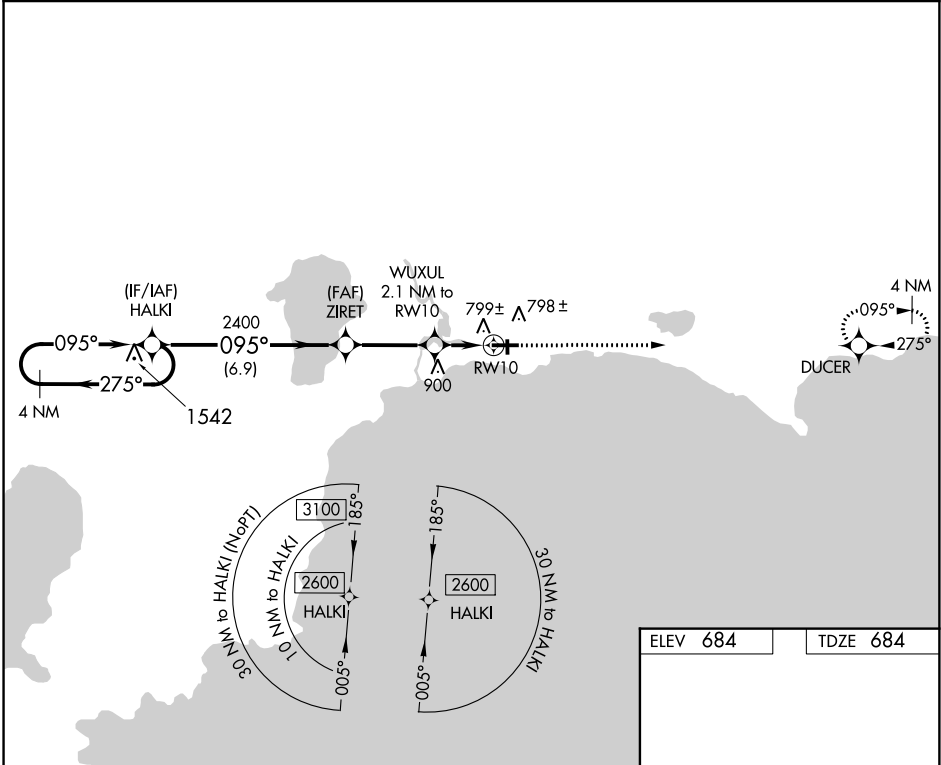
RNAV (GPS) RWY 10

SCHOOLCRAFT COUNTY (ISQ)

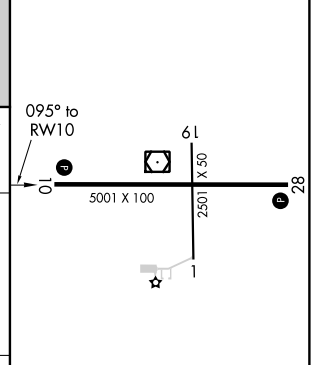
⚠ DME/DME RNP-0.3 NA. Helicopter visibility reduction below 1 SM NA. When local altimeter setting not received, use Beaver Island altimeter setting and increase all MDA 80 feet, increase LNAV Cat C and D visibility 3/8 mile. When VGSI inop, Straight-In/Circling Rwy 10 procedure NA at night. When VGSI inop, Circling Rwy 28 NA at night. Night landing: Rwy 1, 19 NA.

MISSED APPROACH:
Climb to 2600 direct DUCER and hold.

AWOS-3 118.775	GREEN BAY RADIO 122.25	UNICOM 122.8 (CTAF) ①
---------------------------------	---	--



ELEV 684	TDZE 684
----------	----------



CATEGORY	A	B	C	D
LNAV MDA	1060-1 376 (400-1)			
CIRCLING	1120-1 436 (500-1)	1140-1 456 (500-1)	1140-1½ 456 (500-1½)	1260-2 576 (600-2)

REIL Rwy 28 ①
MIRL Rwy 10-28 ①

EC-1, 08 NOV 2018 to 06 DEC 2018

EC-1, 08 NOV 2018 to 06 DEC 2018