

D-ATIS  
135.0  
FORT LAUDERDALE TOWER  
119.3 257.8  
GND CON  
121.4  
CLNC DEL  
128.4  
CPDLC

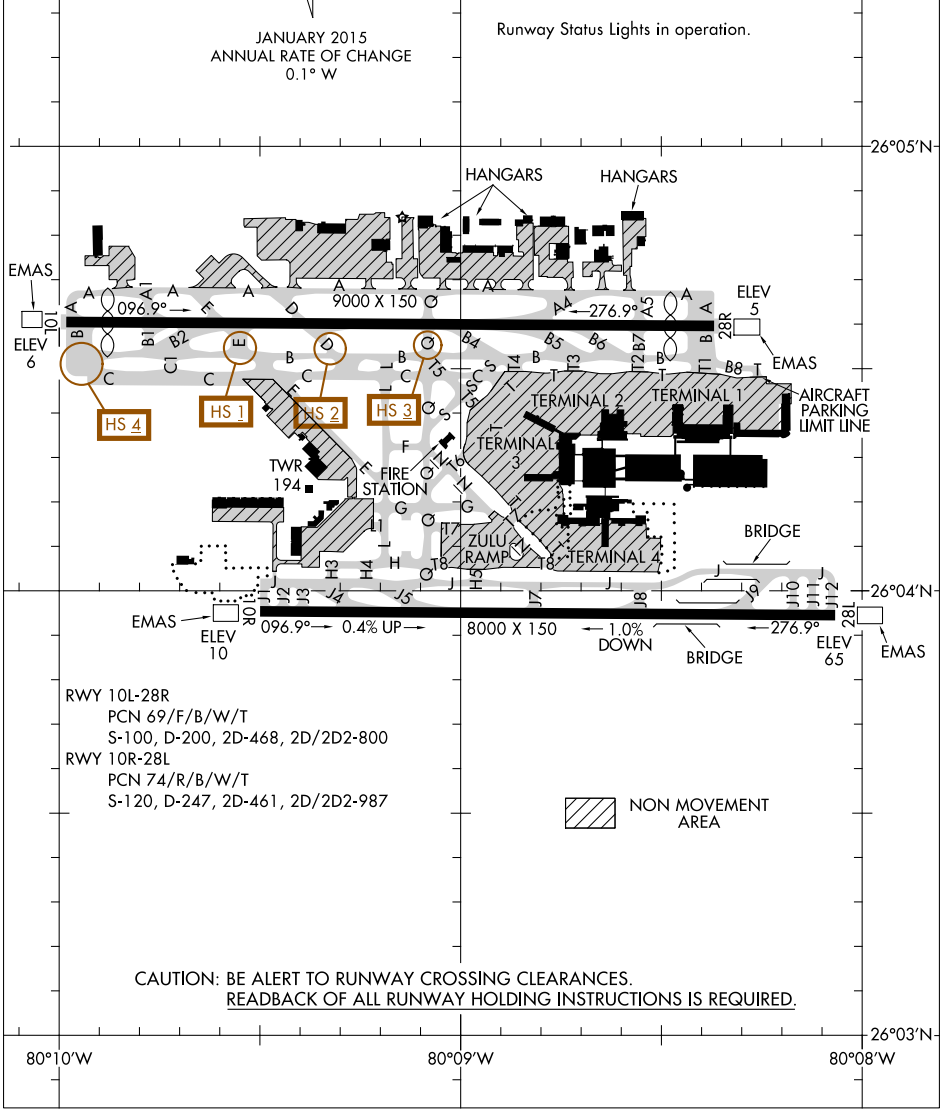
FIELD  
ELEV  
65

212  
MAG 65° W  
JANUARY 2015  
ANNUAL RATE OF CHANGE  
0.1° W

ASDE-X in use. Operate transponders with altitude reporting mode and ADS-B (if equipped) enabled on all airport surfaces.  
Runway Status Lights in operation.

SE-3, 08 NOV 2018 to 06 DEC 2018

SE-3, 08 NOV 2018 to 06 DEC 2018



CAUTION: BE ALERT TO RUNWAY CROSSING CLEARANCES.  
READEBACK OF ALL RUNWAY HOLDING INSTRUCTIONS IS REQUIRED.