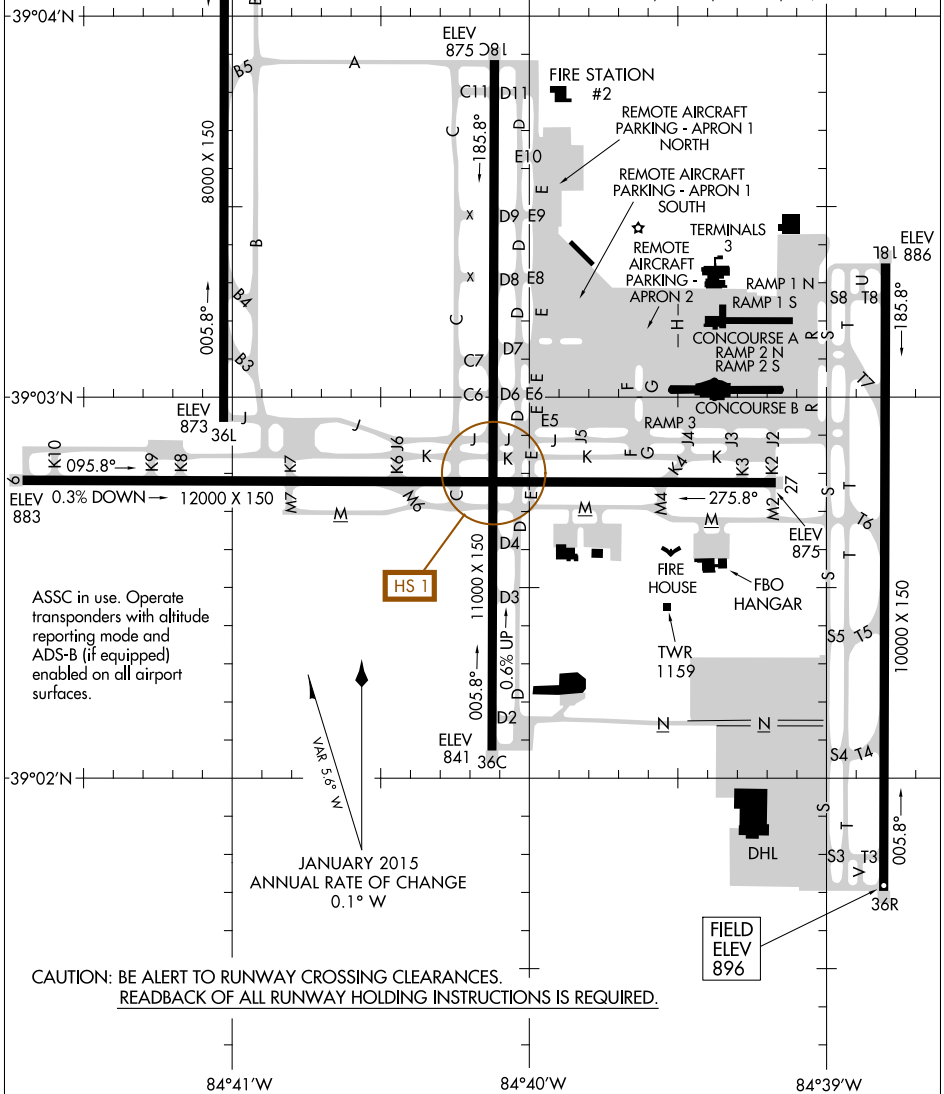


18200 **AIRPORT DIAGRAM** CINCINNATI/NORTHERN KENTUCKY INTL (CVG) AL-655 (FAA) COVINGTON, KENTUCKY

D-ATIS ARR 134.375
 DEP 135.3
 CINCINNATI TOWER
 118.3 (RWYS 18C/36C, 09/27)
 118.975 360.85 (RWY 18L/36R)
 133.325 (RWY 18R/36L)
 GND CON
 121.7
 CLNC DEL
 127.175
D

RWY 09-27
 PCN 101 R/B/W/T
 S-120, D-250, 2D-550, 2D/2D2-875
 RWY 18C-36C
 PCN 112 F/C/W/T
 S-120, D-250, 2D-550, 2D/2D2-875
 RWY 18L-36R
 PCN 127 R/B/W/T
 S-120, D-250, 2D-550, 2D/2D2-875
 RWY 18R-36L
 PCN 170 R/B/W/T
 S-120, D-250, 2D-550, 2D/2D2-875



SE-1, 08 NOV 2018 to 06 DEC 2018

SE-1, 08 NOV 2018 to 06 DEC 2018

ASSC in use. Operate transponders with altitude reporting mode and ADS-B (if equipped) enabled on all airport surfaces.

HS 1

VAR 3.5° W

JANUARY 2015 ANNUAL RATE OF CHANGE 0.1° W

CAUTION: BE ALERT TO RUNWAY CROSSING CLEARANCES. READBACK OF ALL RUNWAY HOLDING INSTRUCTIONS IS REQUIRED.

AIRPORT DIAGRAM COVINGTON, KENTUCKY CINCINNATI/NORTHERN KENTUCKY INTL (CVG) 18200