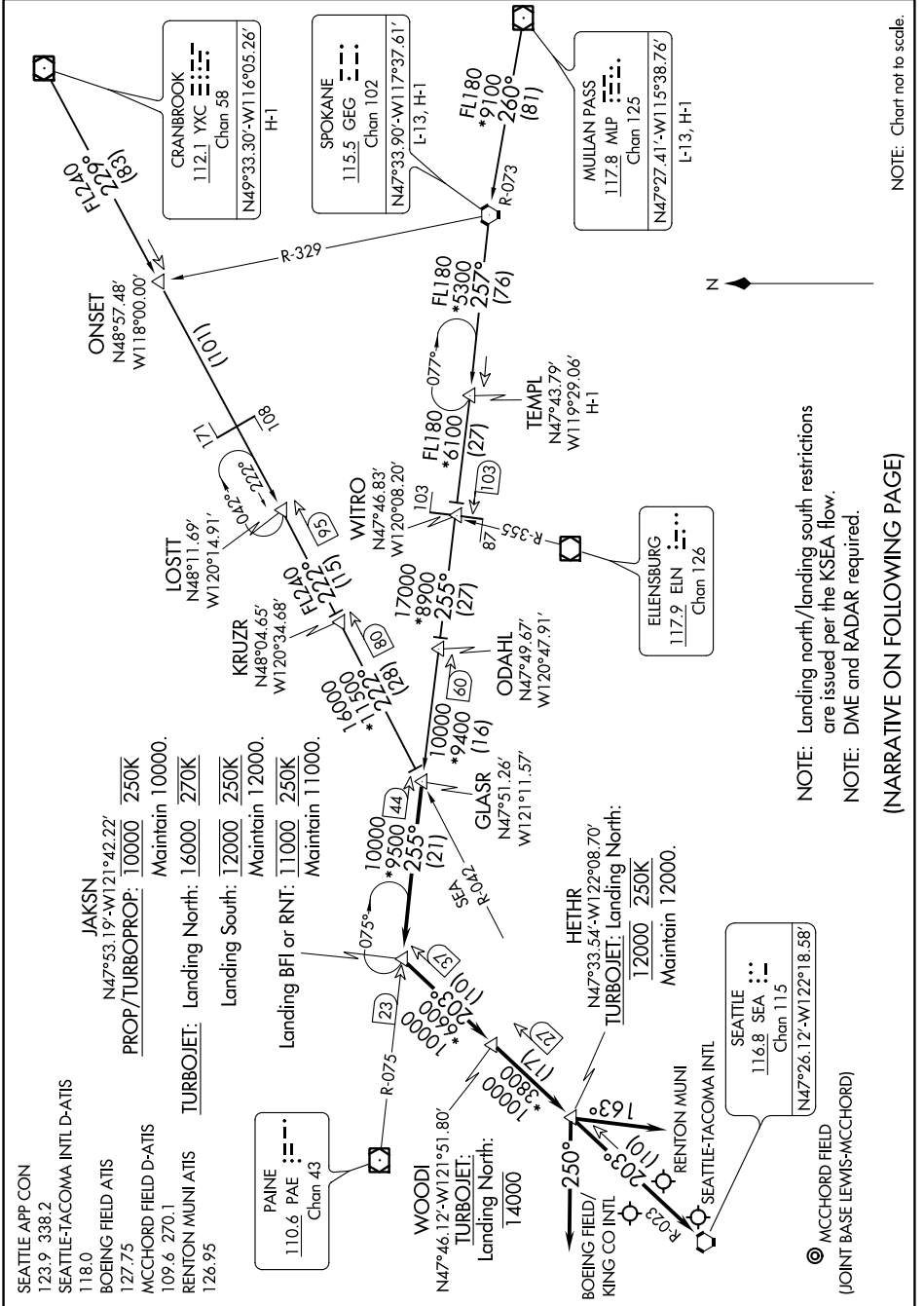


GLASR ONE ARRIVAL

AL-582 (FAA)

SEATTLE, WASHINGTON

81.02 DEC 2017 \ N 08 01 ' 1 - MN



NOTE: Chart not to scale.

NOTE: Landing north/landing south restrictions are issued per the KSEA flow.
NOTE: DME and RADAR required.

(NARRATIVE ON FOLLOWING PAGE)

NW-1, 08 NOV 2018 to 06 DEC 2018

GLASR ONE ARRIVAL

SEATTLE, WASHINGTON

SEATTLE-TACOMA INTL
116.8 SEA
Chan 115
N47°26.12'-W122°18.58'

MCCHORD FIELD
(JOINT BASE LEWIS-MCCHORD)