

# RNAV (GPS) Y RWY 14R

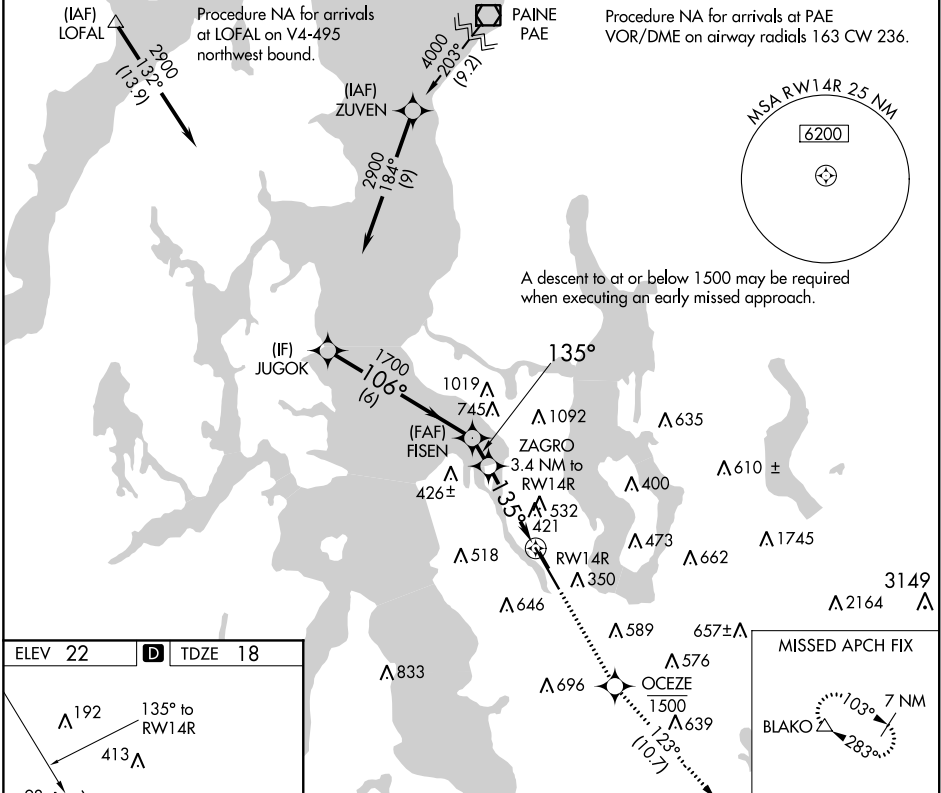
BOEING FIELD/KING COUNTY INTL (BFI)

APP CRS	Rwy Idg	<b>9120</b>
<b>135°</b>	TDZE	<b>18</b>
	Apt Elev	<b>22</b>

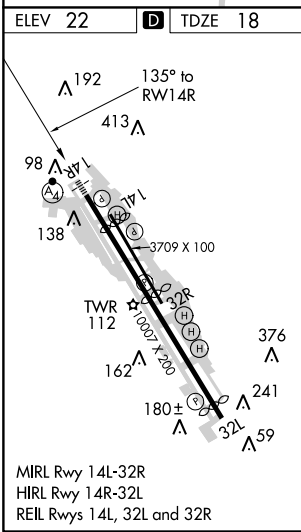
**▼** Circling NA for Cats C and D northeast of Rwy 14L-32R.  
**▲** DME/DME RNP -0.3 NA. For Inop ALS, increase LNAV Cat C and D visibility to 1% SM. Rwy 14R helicopter visibility below RVR 4000 NA. Circling Rwy 32R NA at night.

**MALSF** MISSED APPROACH: Climb direct OCEZE, cross OCEZE at or below 1500, then climb to 6400 on track 123° to BLAKO and hold, continue climb-in-hold to 6400.

ATIS	SEATTLE APP CON	BOEING TOWER	GND CON	CLNC DEL
<b>127.75</b>	<b>119.2 284.7</b>	<b>120.6 257.8</b>	<b>121.9</b>	<b>132.4</b>



A descent to at or below 1500 may be required when executing an early missed approach.



	JUGOK	FISEN	ZAGRO	OCEZE	6400	BLAKO
			3.4 NM to RWY 14R	1500	↑	△
	2900	1700	1280	1500	6400	6400
		3.38° TCH 50		123° tr		
	6 NM	1.1 NM	1.7 NM	1.7 NM		
CATEGORY	A	B	C	D		
LNAV MDA	680/40	662 (700-¾)	680-1¾	662 (700-1¾)		
<b>C</b> CIRCLING	760-1 738 (800-1)	880-1¼ 858 (900-1¼)	960-2¾ 938 (1000-2¾)	960-3 938 (1000-3)		

NW-1, 08 NOV 2018 to 06 DEC 2018

NW-1, 08 NOV 2018 to 06 DEC 2018