

APP CRS 135°	Rwy Idg 9120
	TDZE 18
	Apt Elev 22

RNAV (RNP) Z RWY 14R

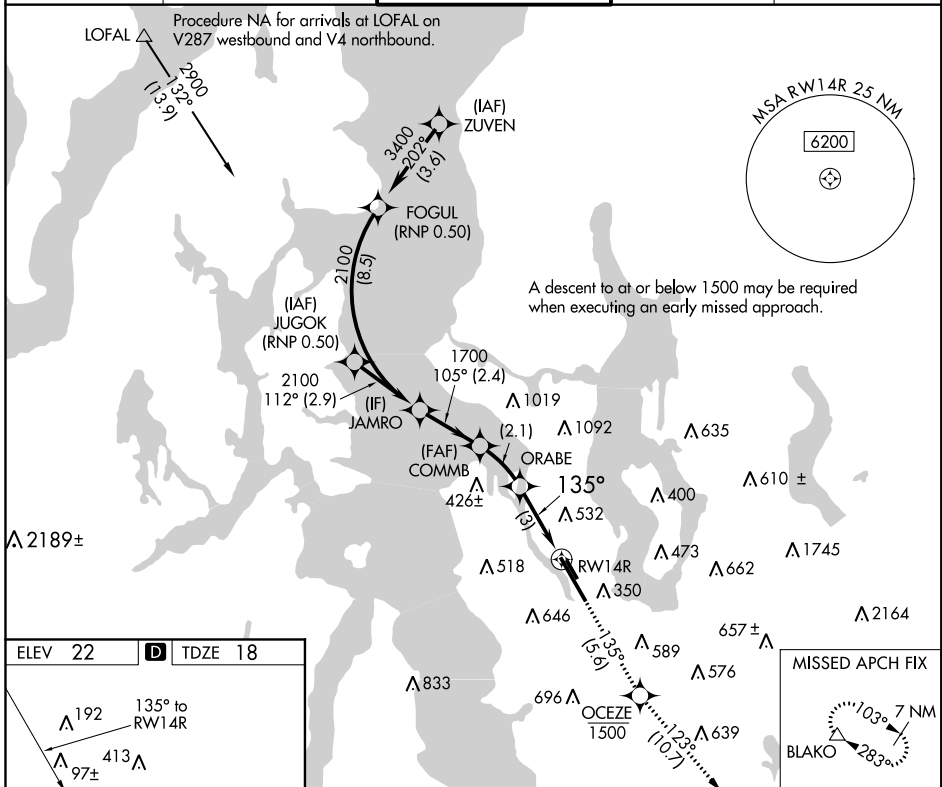
BOEING FIELD/KING COUNTY INTL (BFI)

▼ GPS and RF required. Inop table does not apply to RNP 0.30 DA.
▲ For inop MALSF, increase RNP 0.15 DA Cat D visibility to 1¼ mile.
 For uncompensated Baro-VNAV systems, procedure NA below -6°C (22°F) or above 54°C (130°F).



MISSED APPROACH: Climb on track 135° to cross OCEZE at or below 1500 then climb to 6400 on track 123° to BLAKO and hold, continue climb-in-hold to 6400.

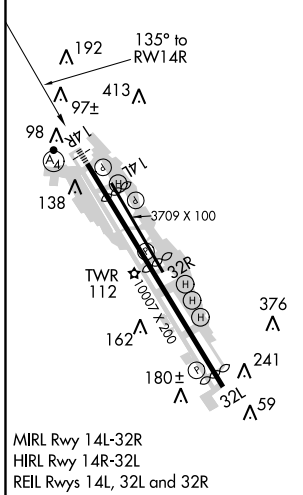
ATIS 127.75	SEATTLE APP CON 119.2 284.7	BOEING TOWER 120.6 257.8	GND CON 121.9	CLNC DEL 132.4
-----------------------	---------------------------------------	------------------------------------	-------------------------	--------------------------



NW-1, 08 NOV 2018 to 06 DEC 2018

NW-1, 08 NOV 2018 to 06 DEC 2018

ELEV 22	D	TDZE 18
---------	----------	---------



JAMRO	2100	105°	COMMB	1700	ORABE	1024	135°	RW14R
GP 3.00° TCH 50		2.4 NM		2.1 NM		3 NM		
CATEGORY	A	B	C	D				
RNP 0.15 DA	542-1½				524 (600-1½)			
RNP 0.30 DA	742-2½				724 (800-2½)			
AUTHORIZATION REQUIRED								