

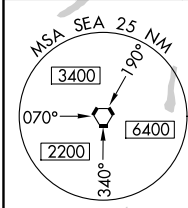
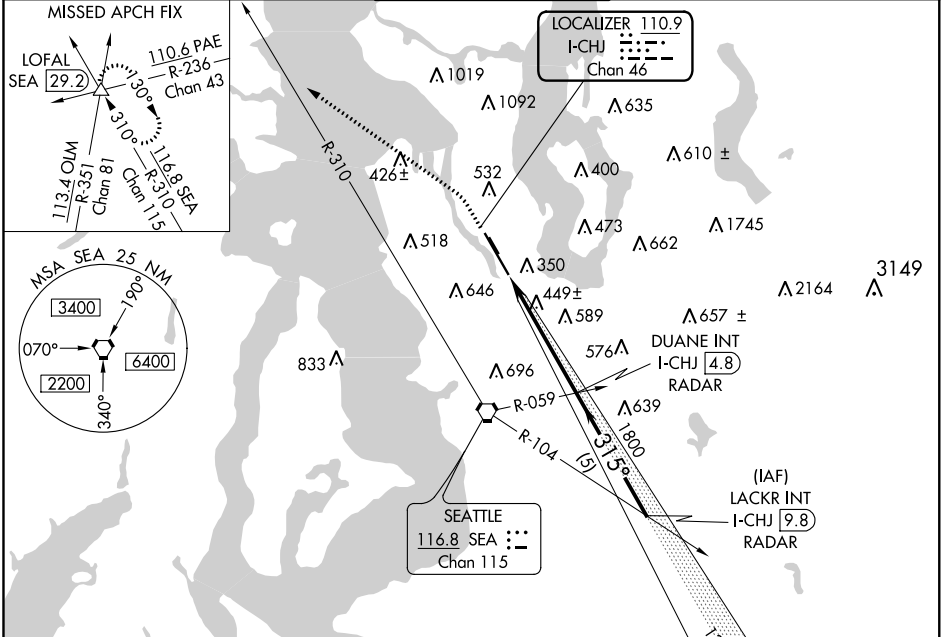
LOC/DME I-CHJ 110.9 Chan 46	APP CRS 315°	Rwy Idg 9120 TDZE 21 Apt Elev 21
--	------------------------	---

ILS or LOC RWY 32L

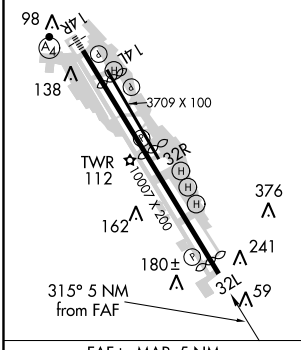
BOEING FIELD/KING COUNTY INTL (BFI)

▼ Helicopter visibility reduction below 3/4 SM NA. **▲** MISSED APPROACH: Climb to 700 then climbing left turn to 6000 on heading 290° and SEA R-310 to LOFAL INT/SEA 29.2 DME and hold, continue climb-in-hold to 6000.

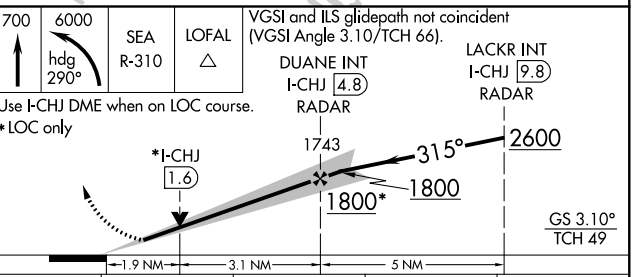
ATIS 127.75	SEATTLE APP CON 119.2 284.7	BOEING TOWER 120.6 257.8	GND CON 121.9	CLNC DEL 132.4
-----------------------	---------------------------------------	------------------------------------	-------------------------	--------------------------



ELEV 21	D TDZE 21
Λ 192	MIRL Rwy 14L-32R
Λ 413	HIRL Rwy 14R-32L
	REIL Rwys 14L, 32L and 32R



RADAR REQUIRED



CATEGORY	A	B	C	D
S-ILS 32L	428-1½ 407 (500-1½)			
S-LOC 32L	700-1 679 (700-1)	700-2 679 (700-2)	700-2¼ 679 (700-2¼)	700-3 679 (700-3)
CIRCLING	780-1 759 (800-1)	840-1¼ 819 (900-1¼)	860-2½ 839 (900-2½)	960-3 939 (1000-3)

FAF to MAP 5 NM					
Knots	60	90	120	150	180
Min:Sec	5:00	3:20	2:30	2:00	1:40

NW-1, 08 NOV 2018 to 06 DEC 2018

NW-1, 08 NOV 2018 to 06 DEC 2018