

17117

AIRPORT DIAGRAM

AL-5100 (FAA)

WASHINGTON DULLES INTL (IAD)

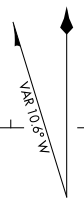
WASHINGTON, DC

D-ATIS
 134.85
 DULLES TOWER
 120.1 317.8 (RWY 01R-19L)
 120.25 348.6 (RWY 01C-19C)
 134.425 348.6
 (RWYS 01L-19R, 12-30)
 GND CON
 121.9 317.8 (EAST)
 121.625 348.6 (WEST)
 CLNC DEL
 135.7 317.8
 MIDFIELD RAMP CON
 129.55
 CPDLC

D
 ASDE-X in use. Operate transponders with altitude reporting mode and ADS-B (if equipped) enabled on all airport surfaces.

Runway Status Lights in operation.

**FIELD
 ELEV
 313**



JANUARY 2015
 ANNUAL RATE OF CHANGE
 0.0° W

GENERAL AVIATION TERMINAL AND RAMP
 U.S. CUSTOMS

CARGO RAMP

CARGO RAMP

SEE INSET

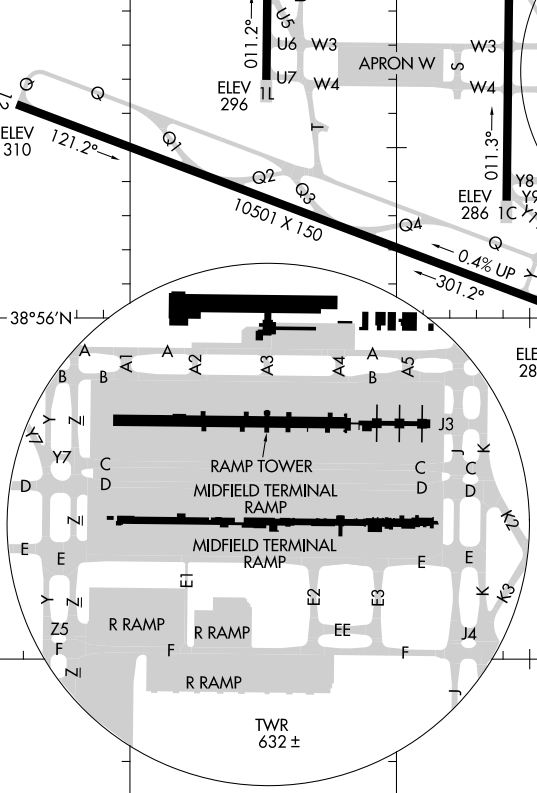
TWR
 632 ±

HOLD BLOCK

ELEV
 288

RWYS 01C-19C, 01L-19R, 01R-19L, 12-30
 PCN 81 R/C/W/T
 S-200, D-250, 2D-450, 2D/2D2-875

CAUTION: BE ALERT TO RUNWAY CROSSING CLEARANCES.
READBCK OF ALL RUNWAY HOLDING INSTRUCTIONS IS REQUIRED.



NE-3, 11 OCT 2018 to 08 NOV 2018

NE-3, 11 OCT 2018 to 08 NOV 2018

AIRPORT DIAGRAM

17117

WASHINGTON DULLES INTL (IAD)

WASHINGTON, DC