

LOC/DME I-ENA <b>108.9</b> Chan 26	APP CRS <b>196°</b>	Rwy ldg <b>7575</b> TDZE <b>98</b> Apt Elev <b>100</b>
--	------------------------	--

# ILS or LOC RWY 20R

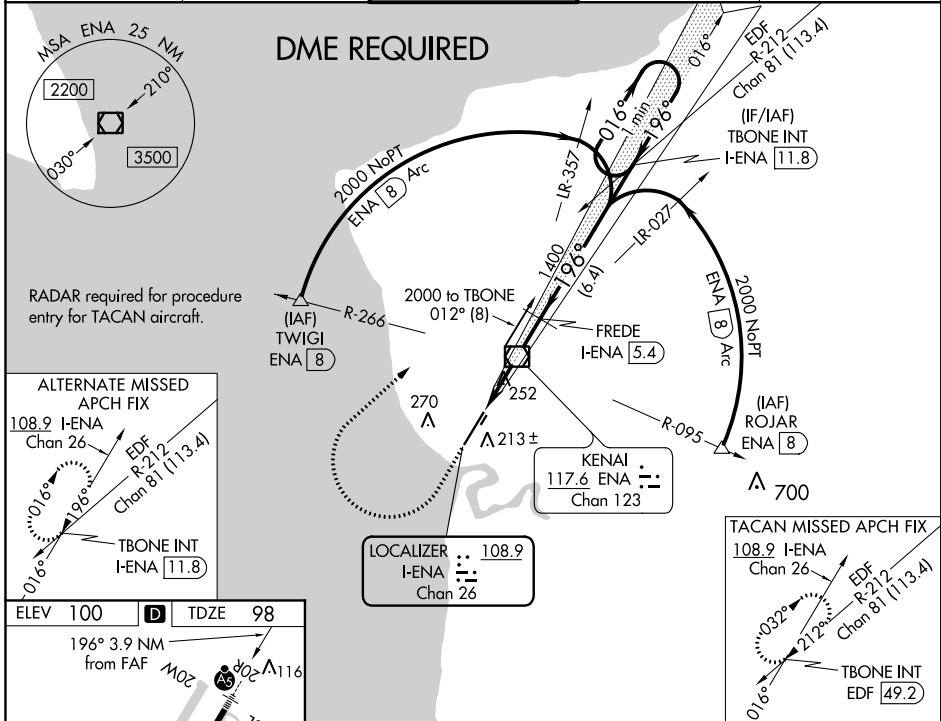
KENAI MUNI (ENA) (PAEN)

**⚠** Circling Rwy 2R, 20L NA at night. DME required.  
When local altimeter setting not received, use Soldotna altimeter setting: increase DA to 320 feet; increase all MDA 40 feet and S-LOC 20R Cat C-E visibility to RVR 5000.  
#RVR 1800 authorized with use of FD or AP or HUD to DA.  
(NA when using Soldotna altimeter setting).

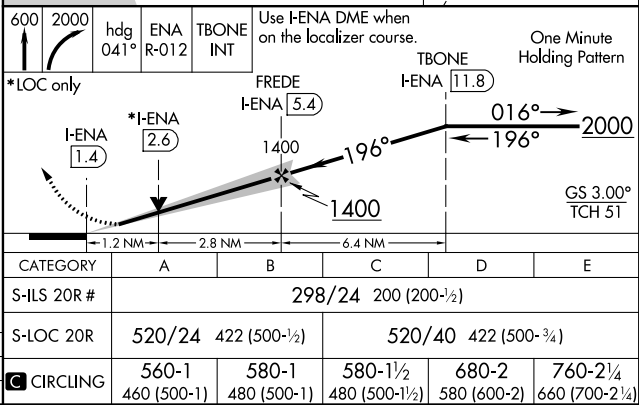
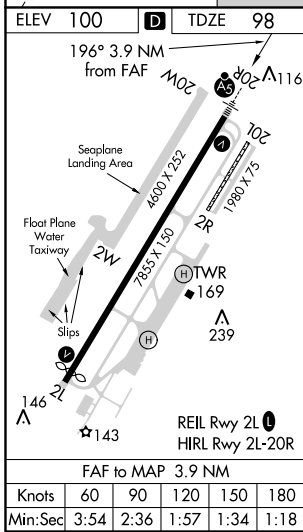
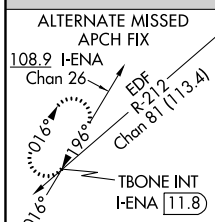
**MALSRS**  
**AS**

**MISSED APPROACH:** Climb to 600 then climbing right turn to 2000 on heading 041° and ENA VOR/DME R-012 to TBONE INT/I-ENA 11.8 DME and hold. (TACAN aircraft climb to 600 then climbing right turn to 2000 on heading 046° and EDF TACAN R-212 to TBONE INT/EDF 49.2 DME and hold northeast, RT, 212° inbound).

ATIS <b>133.35</b>	ANCHORAGE CENTER <b>125.7 379.1</b>	KENAI TOWER* <b>121.3 (CTAF) 239.3</b>	GND CON <b>118.75</b>	KENAI RADIO <b>122.65</b>
-----------------------	--	---	--------------------------	------------------------------



RADAR required for procedure entry for TACAN aircraft.



AK, 13 SEP 2018 to 08 NOV 2018

AK, 13 SEP 2018 to 08 NOV 2018