

# AIRPORT DIAGRAM

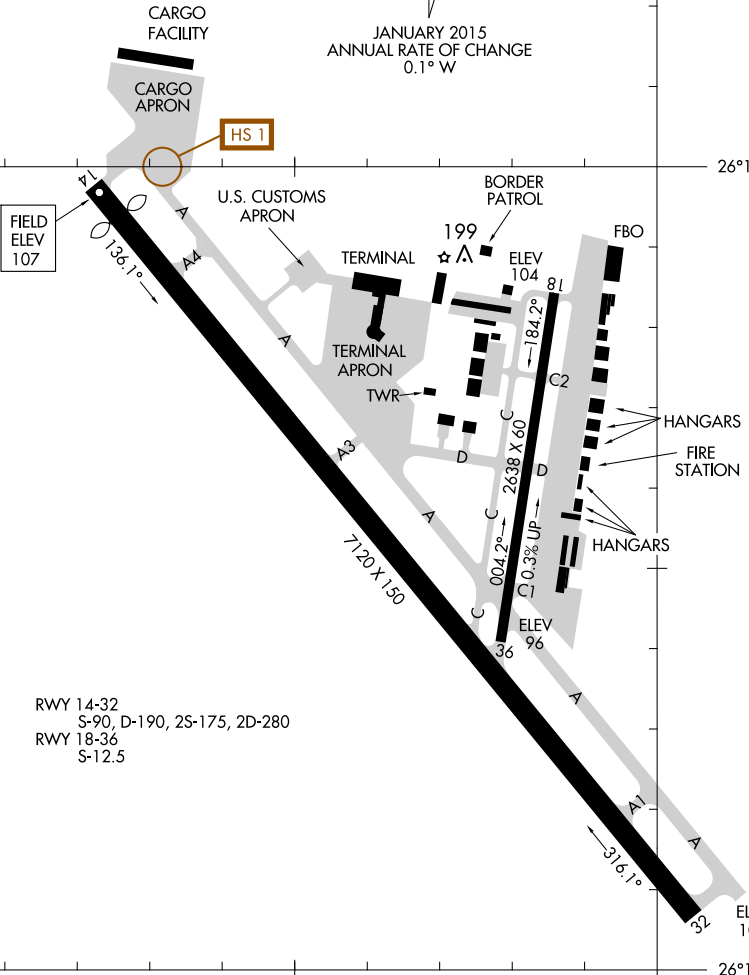
AL-985 (FAA)

MC ALLEN MILLER INTL (MFE)  
MC ALLEN, TEXAS

ATIS 128.5  
MC ALLEN TOWER ★ 118.5 256.9  
GND CON 121.8

D

JANUARY 2015  
ANNUAL RATE OF CHANGE  
0.1° W



26°11'N

SC-3, 11 OCT 2018 to 08 NOV 2018

SC-3, 11 OCT 2018 to 08 NOV 2018

RWY 14-32  
S-90, D-190, 2S-175, 2D-280  
RWY 18-36  
S-12.5

CAUTION: BE ALERT TO RUNWAY CROSSING CLEARANCES.  
READBACK OF ALL RUNWAY INSTRUCTIONS IS REQUIRED.

98°15'W

98°14'W

26°10'N

# AIRPORT DIAGRAM