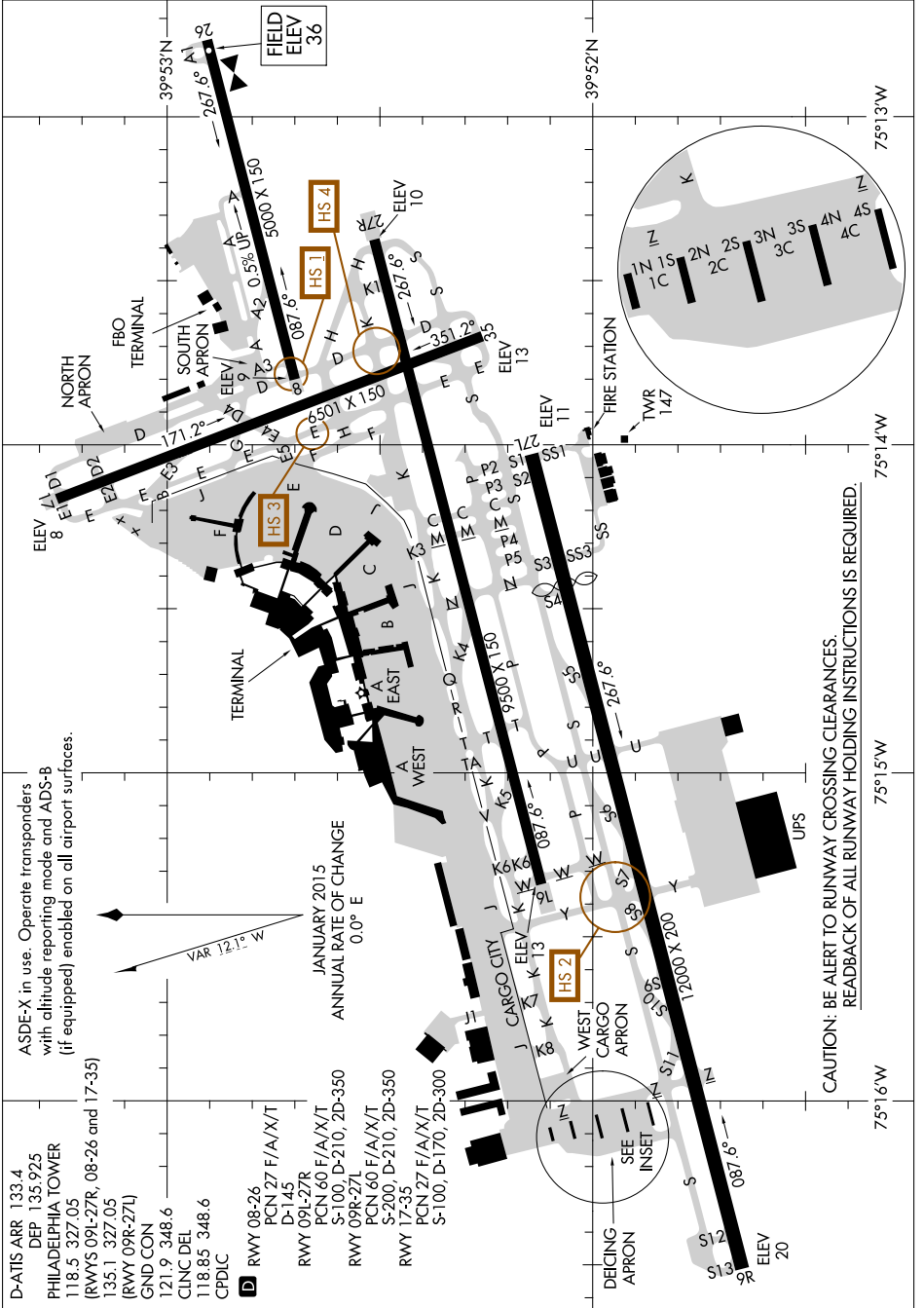


# AIRPORT DIAGRAM

AL-320 (FAA)

PHILADELPHIA INTL (PHL)  
PHILADELPHIA, PENNSYLVANIA

NE-4, 11 OCT 2018 to 08 NOV 2018



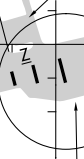
ASDE-X in use. Operate transponders with altitude reporting mode and ADS-B (if equipped) enabled on all airport surfaces.

D-ATIS ARR 133.4  
DEP 135.925  
PHILADELPHIA TOWER  
118.5 327.05  
[RWY'S 09L-27R, 08-26 and 17-35]  
135.1 327.05  
[RWY 09R-27L]  
GND CON  
121.9 348.6  
CLNC DEL  
118.85 348.6  
CPDLC



JANUARY 2015  
ANNUAL RATE OF CHANGE  
0.0° E

- D RWY 08-26  
PCN 27 F/A/X/T  
D-145
- RWY 09L-27R  
PCN 60 F/A/X/T  
S-100, D-210, 2D-350
- RWY 09R-27L  
PCN 60 F/A/X/T  
S-200, D-210, 2D-350
- RWY 17-35  
PCN 27 F/A/X/T  
S-100, D-170, 2D-300



CAUTION: BE ALERT TO RUNWAY CROSSING CLEARANCES.  
READBACK OF ALL RUNWAY HOLDING INSTRUCTIONS IS REQUIRED.

NE-4, 11 OCT 2018 to 08 NOV 2018