



Federal Aviation Administration

SAFETY ALERT

Date: Dec 13, 2019

To: Users of: digital-Terminal Procedures Publication (d-TPP) (2001)

From: Aeronautical Information Services (AIS)

Subject: ILS or LOC RWY 24 at McGuire FLD (Joint Base McGuire Dix Lakehurst),
Wrightstown, NJ (WRI)

Effective January 02, 2020, the ILS or LOC RWY 24 PDF file at McGuire FLD (Joint Base McGuire Dix Lakehurst), Wrightstown, NJ (WRI) was corrupt in the original posting of the downloadable DDTPPA_200102.zip file.

The DDTPPA_200102.zip has been replaced containing the correct file as of Dec 13, 2019 at 1 pm (ET). Also, the correct file is attached to this Safety Alert.

WRIGHTSTOWN, NEW JERSEY

ILS or LOC RWY 24

LOC I-JTQ 110.1	APCH CRS 238°	Rwy Idg 10,014	TDZE 117	Arpt Elev 141
--------------------	------------------	-------------------	-------------	------------------

AL-150 (USAF)
MC GUIRE FIELD (JOINT BASE MC GUIRE DIX LAKEHURST) (KWRI)

⚠ * When ALS inop, increase RVR to 40, vis to 3/4 mile.
** When ALS inop, increase CAT A8 RVR to 55, vis to 1 mile, CAT CDE vis to 1 3/8 miles.
*** Circling East of the Airfield NA when R-5001 A/B active.

ALSF-1 	MISSED APPROACH: Climb to 2000 via GXU R-236 to CISON and hold.
------------	---

ATIS 110.6 270.1	MC GUIRE APP CON 124.15 363.8	TOWER 118.65 255.6	GND CON 121.8 275.8	CLNC DEL 135.2 335.8	PAR
---------------------	----------------------------------	-----------------------	------------------------	-------------------------	-----

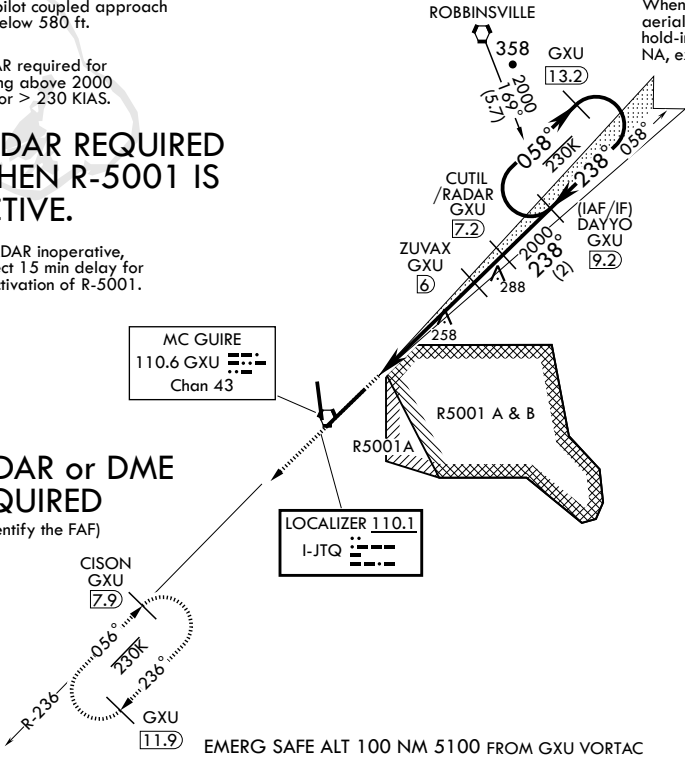
Autopilot coupled approach
NA below 580 ft.

RADAR required for
holding above 2000
and/or > 230 KIAS.

RADAR REQUIRED
WHEN R-5001 IS
ACTIVE.

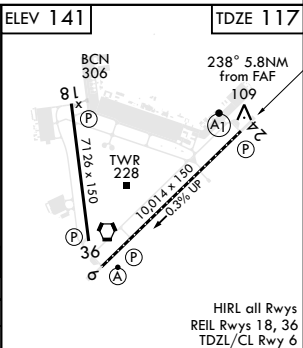
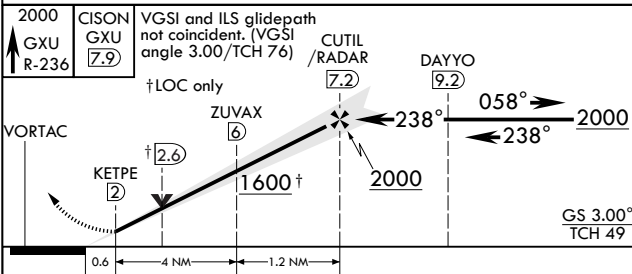
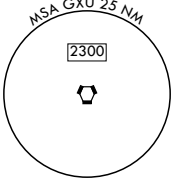
If RADAR inoperative,
expect 15 min delay for
deactivation of R-5001.

When R-5001 is active with
aerial gunnery, DAYYO
hold-in-lieu of procedure turn
NA, expect RADAR vectors.



RADAR or DME
REQUIRED

(To identify the FAF)



CATEGORY	A	B	C	D	E
S-ILS 24*	317/24	200	(200-1/2)		
S-LOC 24**	560/24 443 (500-1/2)	560/45 443 (500-3/8)			
C CIRCLING***	680-1 539 (600-1)	700-1 559 (600-1 1/2)	700-2 559 (600-2)	1200-3 1059 (1100-3)	

FAF to MAP 5.2 NM					
Knots	60	90	120	150	180
Min:Sec	5:12	3:28	2:36	2:05	1:44

WRIGHTSTOWN, NEW JERSEY

MC GUIRE FIELD (JOINT BASE MC GUIRE DIX LAKEHURST) (KWRI)

Amtd 3 05DEC19

40°01'N - 74°36'W

ILS or LOC RWY 24

NE-2, 02 JAN 2020 to 30 JAN 2020

NE-2, 02 JAN 2020 to 30 JAN 2020