



Federal Aviation Administration

SAFETY ALERT

Date: November 15, 2016

To: Users of: digital-Terminal Procedures Publication (d-TPP)
U.S. Terminal Procedures Publication (TPP) Vol NE-1

From: Aeronautical Information Services

Subject: Corrected chart for RNAV (GPS) RWY 15, Orig at Plymouth Muni (PYM),
Plymouth, MA

The Terminal Procedure Publication, NE-1 volume, and the digital-Terminal Procedures Publication, effective November 10, 2016, for RNAV (GPS) RWY 15, Orig at Plymouth, MA, Plymouth Muni (PYM) shows incorrect drainage. A corrected chart will be published on December 8, 2016.

Attached is the correct file for the NE-1 volume RNAV (GPS) RWY 15 for Plymouth Muni (PYM), Plymouth, MA.

WAAS CH 93639 W15A	APP CRS 146°	Rwy Idg TDZE 147 Apt Elev 148
--	------------------------	---

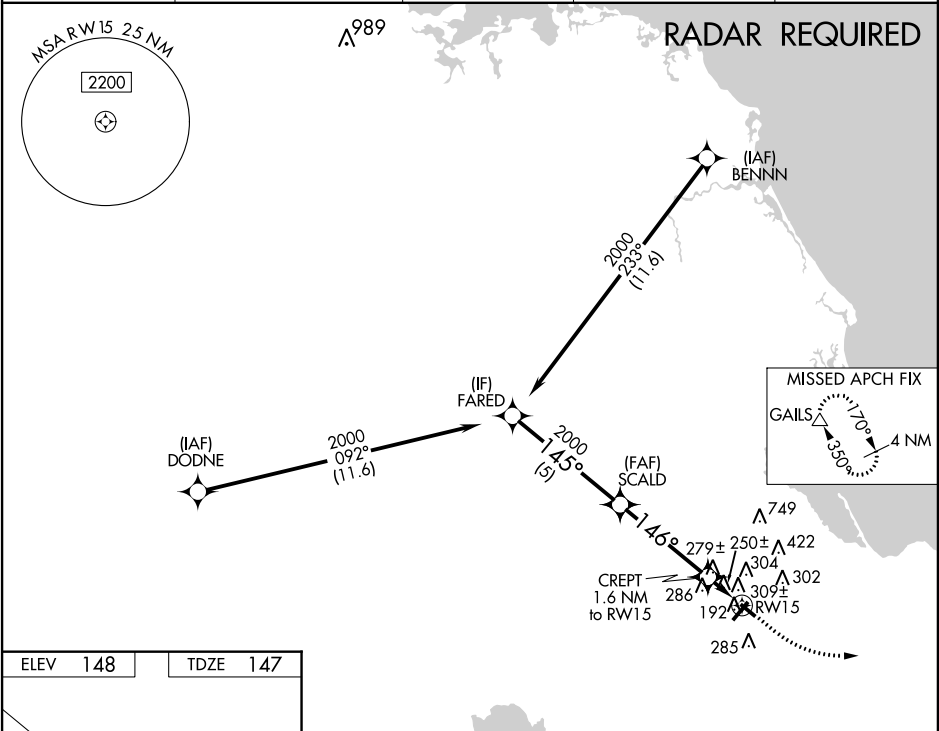
RNAV (GPS) RWY 15

PLYMOUTH MUNI (PYM)

DME/DME RNP-0.3 NA. Rwy 15 helicopter visibility reduction below 1 SM NA. When local altimeter setting not received, use Tauton altimeter setting: increase all MDA 60 feet and visibility Cat C ¼ SM. Straight-in Rwy 15 NA at night, Circling Rwy 15, 33, NA at night.

MISSED APPROACH: Climb to 600 then climbing left turn to 2000 direct GAILS and hold.

ASOS 135.625	CAPE APP CON ★ 118.2 284.6	CLNC DEL 127.75	UNICOM 123.0 (CTAF)	122.9
------------------------	--------------------------------------	---------------------------	-------------------------------	--------------



		600	2000	GAILS
	FARED	SCALD	CREPT 1.6 NM to RW15	RW15
	2000	2000	700	
	145°	146°	3.00° TCH 50	
	5 NM	4.1 NM	1.6 NM	
CATEGORY	A	B	C	D
LP MDA	500-1	353 (400-1)		NA
LNAV MDA	560-1	413 (500-1)	560-1 ¼ 413 (500-1 ¼)	NA
CIRCLING	620-1 472 (500-1)	640-1 492 (500-1)	740-1 ½ 592 (600-1 ½)	NA