



Federal Aviation Administration

SAFETY ALERT

Date: September 16, 2016

To: Users of: digital-Terminal Procedures Publication (d-TPP)
U.S. Terminal Procedures Publication (TPP) Vol SE-3

From: Aeronautical Information Services

Subject: Takeoff description missing from PALM BEACH EIGHT DEPARTURE (PBI8.PBI)
at Palm Beach Intl (PBI), West Palm Beach, FL

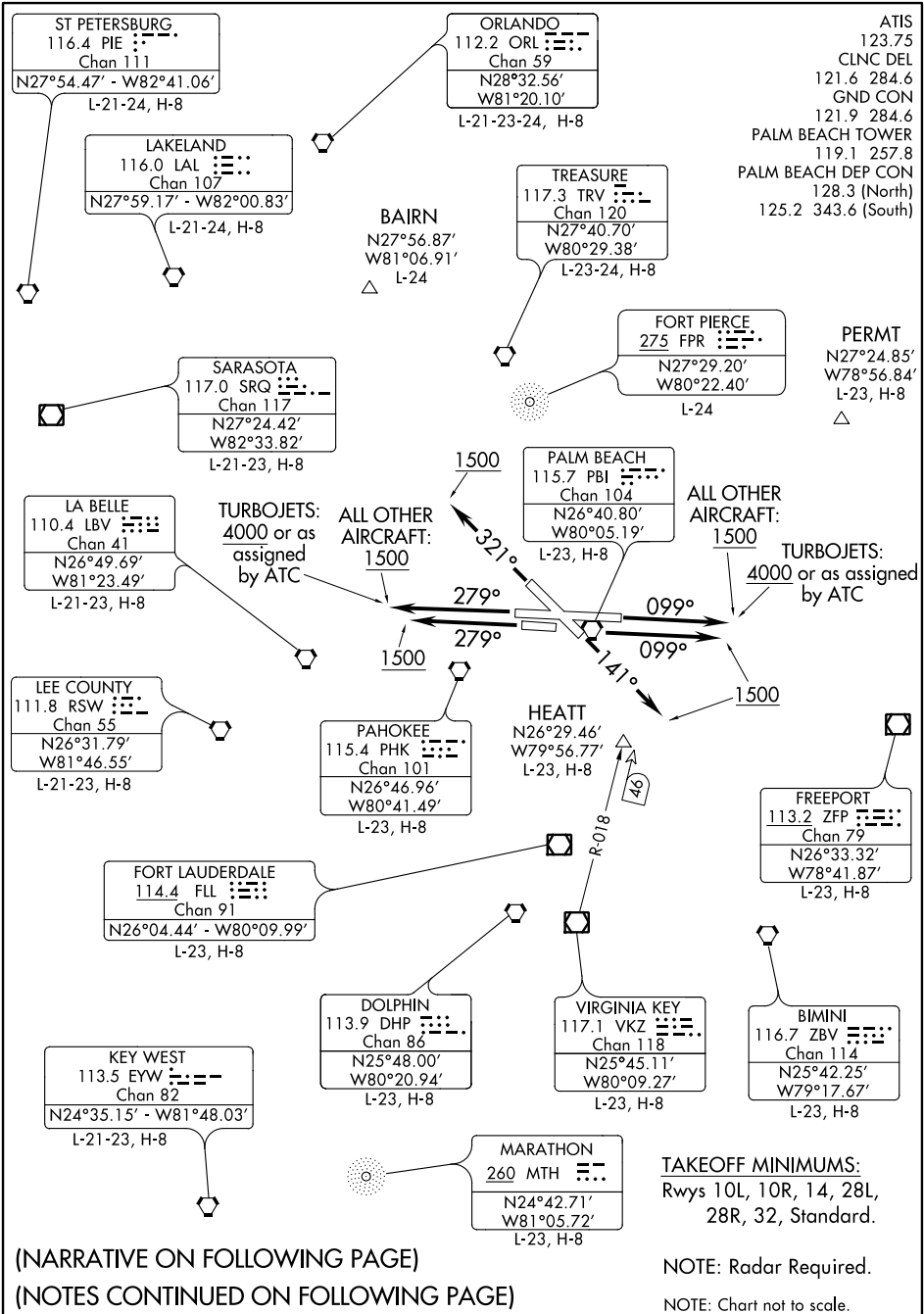
In the Terminal Procedure Publication, SE-3 volume, and the digital-Terminal Procedures Publication, effective September 15, 2016, PALM BEACH EIGHT DEPARTURE (PBI8.PBI) at Palm Beach Intl (PBI), West Palm Beach, FL was missing the Takeoff Route depiction and description for RWY 10R.

The route should be charted in the planview and the note should be charted in the All Other Aircraft section on the Departure Route Description page. See the correction in the attached corrected copy of the PALM BEACH EIGHT DEPARTURE (PBI8.PBI) at Palm Beach Intl (PBI), West Palm Beach, FL.

The chart correction will be published in the November 10, 2016 charting cycle.

SE-3, 15 SEP 2016 to 10 NOV 2016

SE-3, 15 SEP 2016 to 10 NOV 2016



(NARRATIVE ON FOLLOWING PAGE)
(NOTES CONTINUED ON FOLLOWING PAGE)



DEPARTURE ROUTE DESCRIPTION

TURBOJETS:

TAKEOFF RWY 10L: Climb heading 099° to 4000 or as assigned by ATC, thence. . . .

TAKEOFF RWY 14: Climb heading 141° to 1500, thence. . . .

TAKEOFF RWY 28R: Climb heading 279° to 4000 or as assigned by ATC, thence. . . .

TAKEOFF RWY 32: Climb heading 321° to 1500, thence. . . .

ALL OTHER AIRCRAFT:

TAKEOFF RWYS 10R and 10L: Climb heading 099° to 1500, thence. . . .

TAKEOFF RWY 14: Climb heading 141° to 1500, thence. . . .

TAKEOFF RWY 28R and 28L: Climb heading 279° to 1500, thence. . . .

TAKEOFF RWY 32: Climb heading 321° to 1500, thence. . . .

. . . .expect radar vectors to assigned/filed route. Expect further clearance to filed altitude 10 minutes after departure.

TAKEOFF OBSTACLE NOTES:

Rwy 10R: Antenna on hanger 177' from DER, 450' right of centerline, 38' AGL/57' MSL.

Rwy 10L: Light pole 1461' from DER, 843' right of centerline, 45' AGL/64' MSL.

Rwy 14: Transmission line tower, traffic signal, poles, and trees beginning 649' from DER, 24' left of centerline, up to 71' AGL/90' MSL.

Vehicles on road, light poles, and trees beginning 168' from DER, 76' right of centerline, up to 87' AGL/106' MSL.

Rwy 28R: Light pole and trees beginning 1205' from DER, 323' left of centerline, up to 63' AGL/82' MSL.

Sign, light poles, and trees beginning 1233' from DER, 155' right of centerline, up to 44' AGL/63' MSL.

Rwy 32: Trees beginning 1993' from DER, 444' left of centerline, 69' AGL/88' MSL.

Trees beginning 1108' from DER, 548' right of centerline, up to 70' AGL/89' MSL.