



Federal Aviation Administration

SAFETY ALERT

Date: August 2, 2016

To: Users of:

U.S. Terminal Procedures Publication (TPP)
digital-Terminal Procedures Publication (d-TPP)

From: Aeronautical Information Services

Subject: TPP SW-3 Navaid information missing for Missed Approach Procedure instructions
on ILS Z RWY 16R, ORIG, for Van Nuys (VNY), Van Nuys, CA

In the Terminal Procedure Publication, SW-3 volume, and the digital-Terminal Procedures Publication, effective July 21, 2016, for Van Nuys (VNY), Van Nuys, CA, ILS Z RWY 16R, ORIG, there is a missing Navaid, and its related data to be used for Missed Approach Procedure instructions. The corrected chart will be published on Sep 15, 2016.

Attached is the correct file for the SW-3 volume ILS Z RWY 16R, ORIG, for Van Nuys (VNY), Van Nuys, CA.

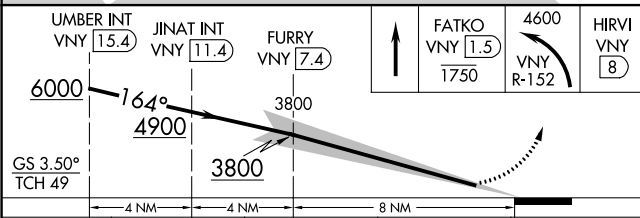
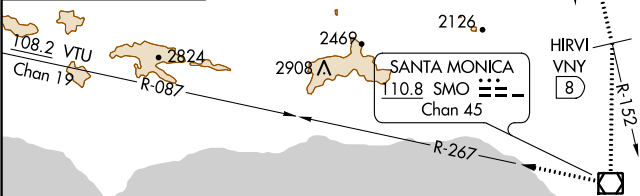
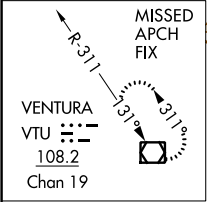
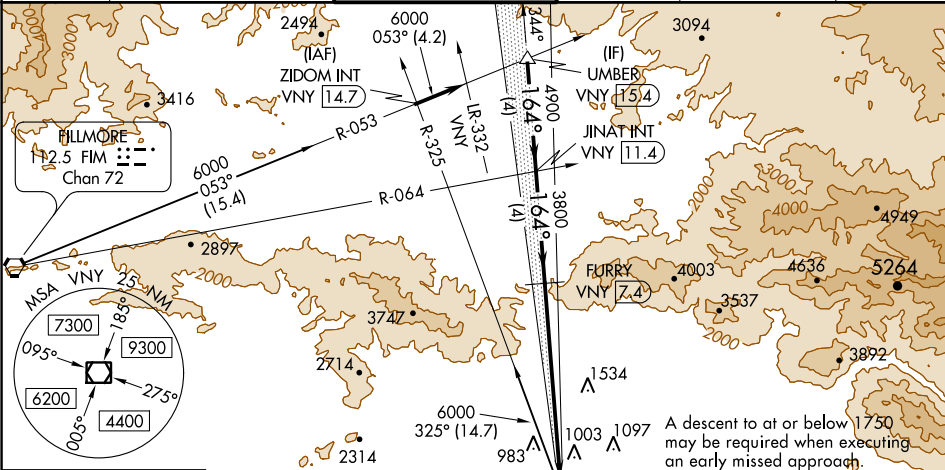
LOC I-VNY	APP CRS	Rwy Idg	6569
111.3	164°	TDZE	793
		Apt Elev	802

ILS Z RWY 16R
VAN NUYS (VNY)

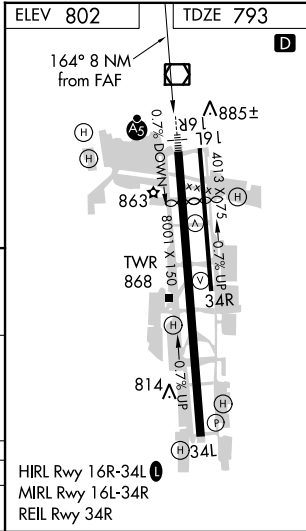
⚠ DME required. When local altimeter setting not received, use Burbank altimeter setting and increase DA to 1114. Helicopter visibility reduction below RVR 4000 NA. For inop MALS, increase Cat A/B/C visibility to RVR 5000. Autopilot coupled approach NA below 1990.

MISSED APPROACH: Climb to cross FATKO/VNY VOR/DME 1.5 DME at or below 1750 then climbing left turn to 4600 on VNY VOR/DME R-152 direct HIRVI/VNY VOR/DME 8 DME then direct SMO VOR/DME and on SMO VOR/DME R-267 and on VTU VOR/DME R-087 to VTU VOR/DME and hold.

ATIS	SOCAL APP CON	VAN NUYS TOWER ★	GND CON	CLNC DEL	UNICOM
127.55	120.4 360.6 (NORTH) 134.2 338.2 (WEST)	119.3 (CTAF) 0 239.0	121.7	126.6 239.0	122.95



CATEGORY	A	B	C	D
S-ILS 16R		1095/40	302 (300-3%)	



SW-3, 21 JUL 2016 to 18 AUG 2016

SW-3, 21 JUL 2016 to 18 AUG 2016