



## Federal Aviation Administration

---

# SAFETY ALERT

Date: July 25, 2016

To: Users of:

U.S. Terminal Procedures Publication (TPP) SW-3 Volume  
digital-Terminal Procedures Publication (d-TPP)

From: Aeronautical Information Services

Subject: TPP SW-3 Navaid information missing for Missed Approach Procedure instructions  
on ILS Y RWY 16R, AMDT 6, for Van Nuys (VNY), Van Nuys, CA

---

In the Terminal Procedure Publication, SW-3 volume, and the digital-Terminal Procedures Publication, effective July 21, 2016, for Van Nuys (VNY), Van Nuys, CA, ILS Y RWY 16R, AMDT 6, there is a missing Navaid, and its related data to be used for Missed Approach Procedure instructions. The corrected chart will be published on Aug 18, 2016.

Attached is the correct file for the SW-3 volume ILS Y RWY 16R, AMDT 6, for Van Nuys (VNY), Van Nuys, CA.

LOC I-VNY	APP CRS	Rwy Idg	6569
111.3	164°	TDZE	793
		Apt Elev	802

# ILS Y RWY 16R

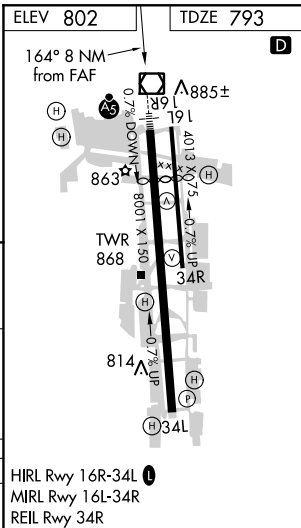
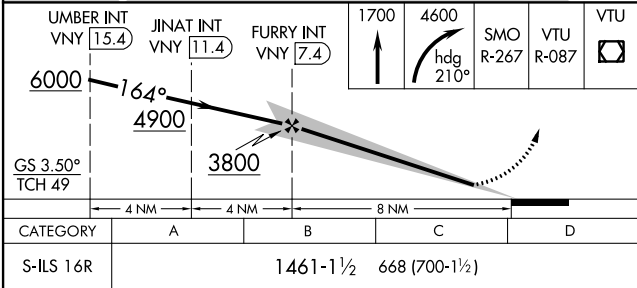
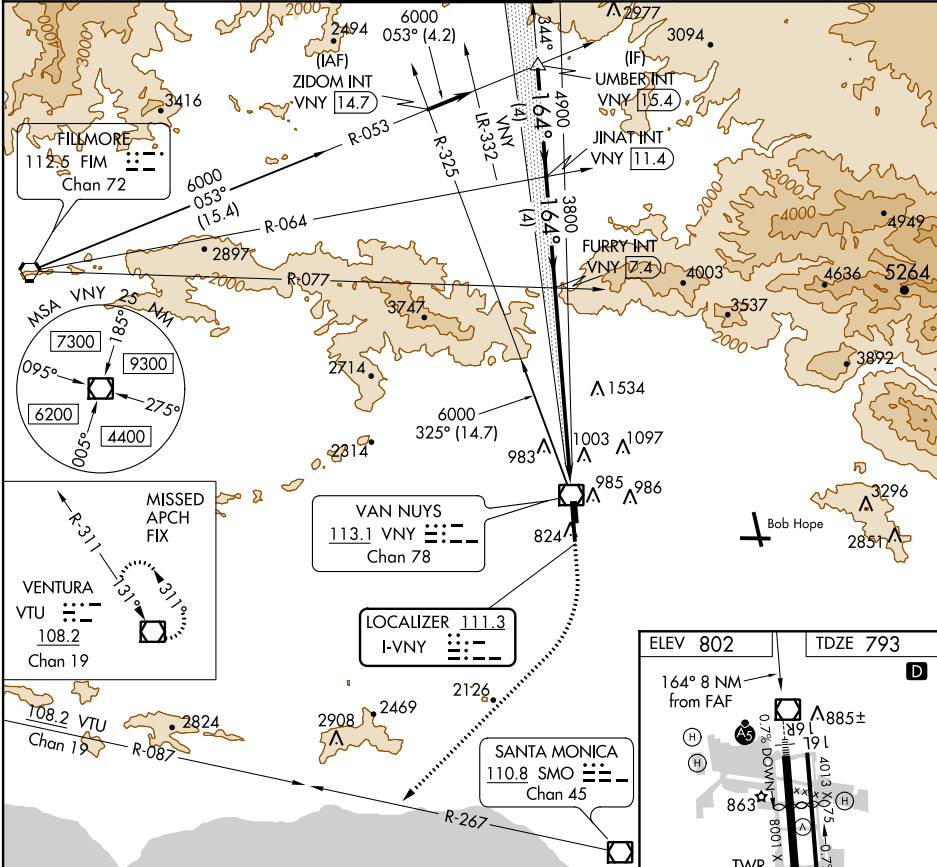
VAN NUYS (VNY)

For inop MALSR, increase S-ILS all Cts visibility to 2 SM. When local altimeter setting not received, use Burbank altimeter setting and increase DA to 1480 feet and all Cts visibility to 1 1/2 SM. Autopilot coupled approach NA below 1990.



MISSED APPROACH: Climb to 1700 then climbing right turn to 4600 on heading 210° and on SMO VOR/DME R-267 and on VTU VOR/DME R-087 to VTU VOR/DME and hold.

ATIS	SOCAL APP CON	VAN NUYS TOWER ★	GND CON	CLNC DEL	UNICOM
127.55	120.4 360.6 (NORTH) 134.2 338.2 (WEST)	119.3 (CTAF) 239.0	121.7	126.6 239.0	122.95



SW-3, 21 JUL 2016 to 18 AUG 2016

SW-3, 21 JUL 2016 to 18 AUG 2016