

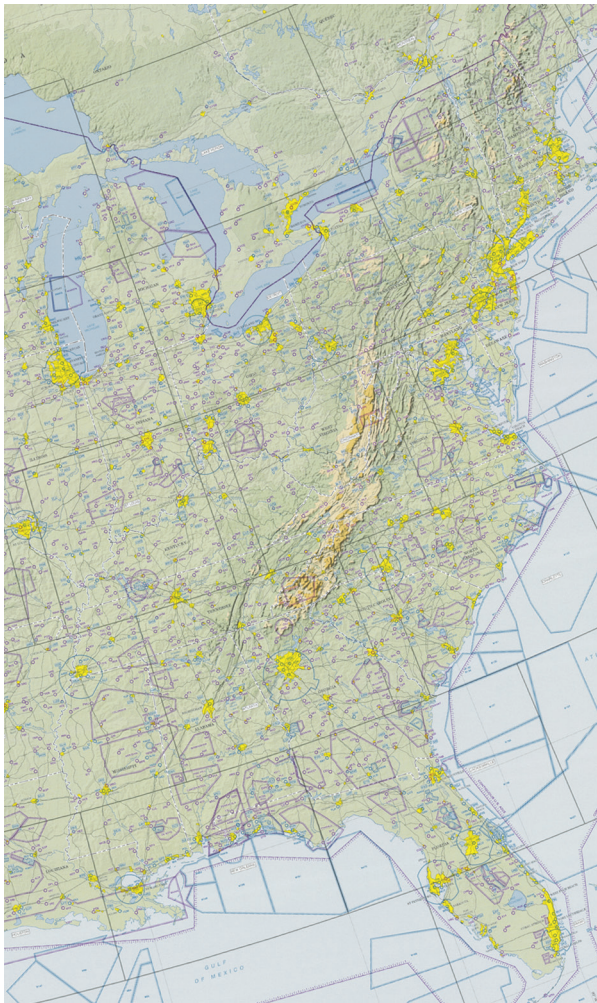


**Federal Aviation
Administration**

TM

U.S. VFR Wall Planning Chart

- ✈ The U.S. VFR Wall Planning Chart is designed for VFR preflight planning.
- ✈ Depicts aeronautical information to include: select airports, radio aids to navigation, Class B airspace, and special use airspace.
- ✈ The topographic information portrayed includes: populated places, principal roads, drainage patterns and shaded relief.
- ✈ One-sided chart, covering the conterminous United States.
- ✈ Scale: 1:3,100,000



Planning Charts



aeronav.faa.gov